



ZHX3403 Family

MIR UltraSlim™ Transceivers (IrMC)

Preliminary Product Specification

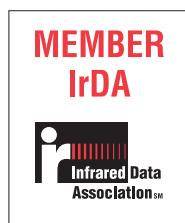
PS011604-0302



This publication is subject to replacement by a later edition. To determine whether a later edition exists, or to request copies of publications, contact:

ZiLOG Worldwide Headquarters

532 Race Street
San Jose, CA 95126-3432
Telephone: 408.558.8500
Fax: 408.558.8300
www.ZiLOG.com



ZiLOG is a registered trademark of ZiLOG Inc. in the United States and in other countries. All other products and/or service names mentioned herein may be trademarks of the companies with which they are associated.

Document Disclaimer

©2002 by ZiLOG, Inc. All rights reserved. Information in this publication concerning the devices, applications, or technology described is intended to suggest possible uses and may be superseded. ZiLOG, INC. DOES NOT ASSUME LIABILITY FOR OR PROVIDE A REPRESENTATION OF ACCURACY OF THE INFORMATION, DEVICES, OR TECHNOLOGY DESCRIBED IN THIS DOCUMENT. ZiLOG ALSO DOES NOT ASSUME LIABILITY FOR INTELLECTUAL PROPERTY INFRINGEMENT RELATED IN ANY MANNER TO USE OF INFORMATION, DEVICES, OR TECHNOLOGY DESCRIBED HEREIN OR OTHERWISE. Devices sold by ZiLOG, Inc. are covered by warranty and limitation of liability provisions appearing in the ZiLOG, Inc. Terms and Conditions of Sale. ZiLOG, Inc. makes no warranty of merchantability or fitness for any purpose. Except with the express written approval of ZiLOG, use of information, devices, or technology as critical components of life support systems is not authorized. No licenses are conveyed, implicitly or otherwise, by this document under any intellectual property rights.

Table of Contents

Description	1
Features	2
Pin Description	2
VCC Positive Supply	3
GND Ground	3
SD Shutdown	3
RXD Receive Data	3
TXD Transmit Data	3
LEDA LED Driver	3
TAB Shield Connection	3
Application Block Diagrams	4
Electrical and Timing Specifications	5
Shutdown and Bandwidth Change	7
ZHX3403 Family Tape and Reel Specifications	8
ZHX3403 Family Soldering and Cleaning Recommendations	9
Reflow Soldering	9
Manual Soldering	9
Cleaning	9
Moisture Prevention Guidelines	10
Baking	10
Mechanical Drawing	11
Ordering Information	12
Customer Feedback Form	12
Customer Information	12
Product Information	12
Return Information	12
Problem Description or Suggestion	12



List of Figures

Figure 1.	UltraSlim Form	1
Figure 2.	ZHX3403 Block Diagram	1
Figure 3.	ZHX3403 Family Application Block Diagrams	4
Figure 4.	Shutdown and Bandwidth Control Timing	7
Figure 5.	ZHX3403 Family Reel Specifications	8
Figure 6.	ZHX3403 Family Tape Specifications	8
Figure 7.	Temperature Profile for the Top Surface	9
Figure 8.	ZHX3403 Packaging	10
Figure 9.	ZHX3403 Mechanical Drawing	11

List of Tables

Table 1.	ZHX3403 Family Transceiver Pin Out	2
Table 2.	Absolute Maximum Ratings	5
Table 3.	Recommended Operating Conditions	5
Table 4.	Electrical Characteristics	5
Table 5.	Shutdown and Bandwidth Control Timing	7

Description

The ZILOG ZHX3403 family for mobile phones, pagers, and PDAs is the smallest, lowest power, and highest functional transceiver in its class.

The ZiLOG ZHX3403MA features exclusive AlwaysOn™ technology that allows the transceiver to “listen” for an IrDA communication at a typical current of 6 μ A, allowing the default mode to be left on with negligible effect on the battery life. Once another IrDA device has been discovered, communication takes place at the low receive current consumption of 215 μ A (typically). The ZHX3403MB features *only* the low receive current consumption of 215 μ A (typically).

The UltraSlim form factor (7.3 mm long x 2.8 mm wide x 1.9 mm high) allows placement in virtually any small device (see Figure 1). Application circuit space is also minimized because only two external components are required.



Figure 1. UltraSlim Form

The ZHX3403 family is designed to support IrDA-Data MIR mode, which at 1.15 Mbits/s (10 times typical PDA and mobile telephone solutions) provides enhanced capability for the user to share pictures, MP3 files, PDF files, or other large files.

The transceiver combines an IRED emitter, a PIN photodiode, and a unique driver/control ASIC in a single package, as shown in Figure 2.

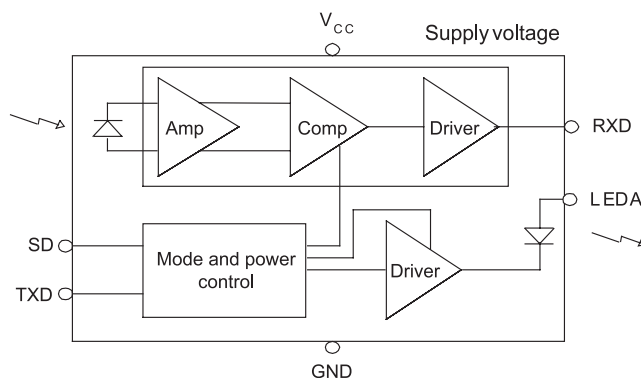


Figure 2. ZHX3403 Block Diagram

The ZILOG ZHX3403 also features a shutdown control that minimizes current draw to 0.1 μ A.

Features

- Compliant to IrDA Data Specification Low Power MIR (link range: low power to low power—0 to 20 cm; standard power to low power—0 to 30 cm)
- Low-power supply voltage range: 1.8 to 3.6 V
- ZHX3403MA listening current: only 6 μ A (typically) at 3.0 V (ZiLOG exclusive)
- UltraSlim package: 7.3 mm long x 2.8 mm wide x 1.9 mm high
- Only one external component
- Extended operating temperature range: -30°C to $+85^{\circ}\text{C}$
- Internal current source eliminates current limiting resistor
- Meets IEC 825-1 Class 1 eye safety specifications

Pin Description

Table 1 lists the pin out for the ZHX3403 family transceivers. The pins are described in this section.

Table 1. ZHX3403 Family Transceiver Pin Out

Pin	Name	Function	I/O
1	NC	NC (future use)	—
2	V _{CC}	Supply voltage	—
3	GND	Ground	—
4	SD	Shutdown	I
5	RXD	Receiver output	O
6	TXD	Transmitter input	I
7	LEDA	IRED anode	—
—	TAB	Shield connection	—

V_{CC} Positive Supply

(Power)

Connect to positive power supply (1.8–3.6 V). Filter with a 0.33-μF ceramic bypass capacitor and terminating resistor as close as possible to the V_{CC} pin.

GND Ground

(Power)

Connect to ground of the power supply. A solid ground plane is recommended for proper operation.

SD Shutdown

(Input, active high)

This input is used to place the transceiver into a shutdown mode and to change bandwidth from SIR to MIR (see “Shutdown and Bandwidth Change” on page 7).

RXD Receive Data

(Output, active low)

This output provides received serial data. It is a tri-state, slew rate controlled CMOS output (tri-stated during shutdown) driver capable of driving a standard CMOS or LS series TTL load. No external resistor is required.

TXD Transmit Data

(Input, active high)

This CMOS input is used to transmit serial data and has an internal pull-down resistor that is disabled (open-circuited) during shutdown. With integrated digital AC coupling, no external components are required for input signals between GND and V_{CC}.

LEDA LED Driver

(Power)

This output is internally connected to the LED anode and contains an internal current source. The voltage range on this pad is 1.8–4.2 volts.

TAB Shield Connection

The shield tab must be soldered to ground for proper operation.

Application Block Diagrams

Figure 3 shows the application block diagrams for the ZHX3403 family transceivers.

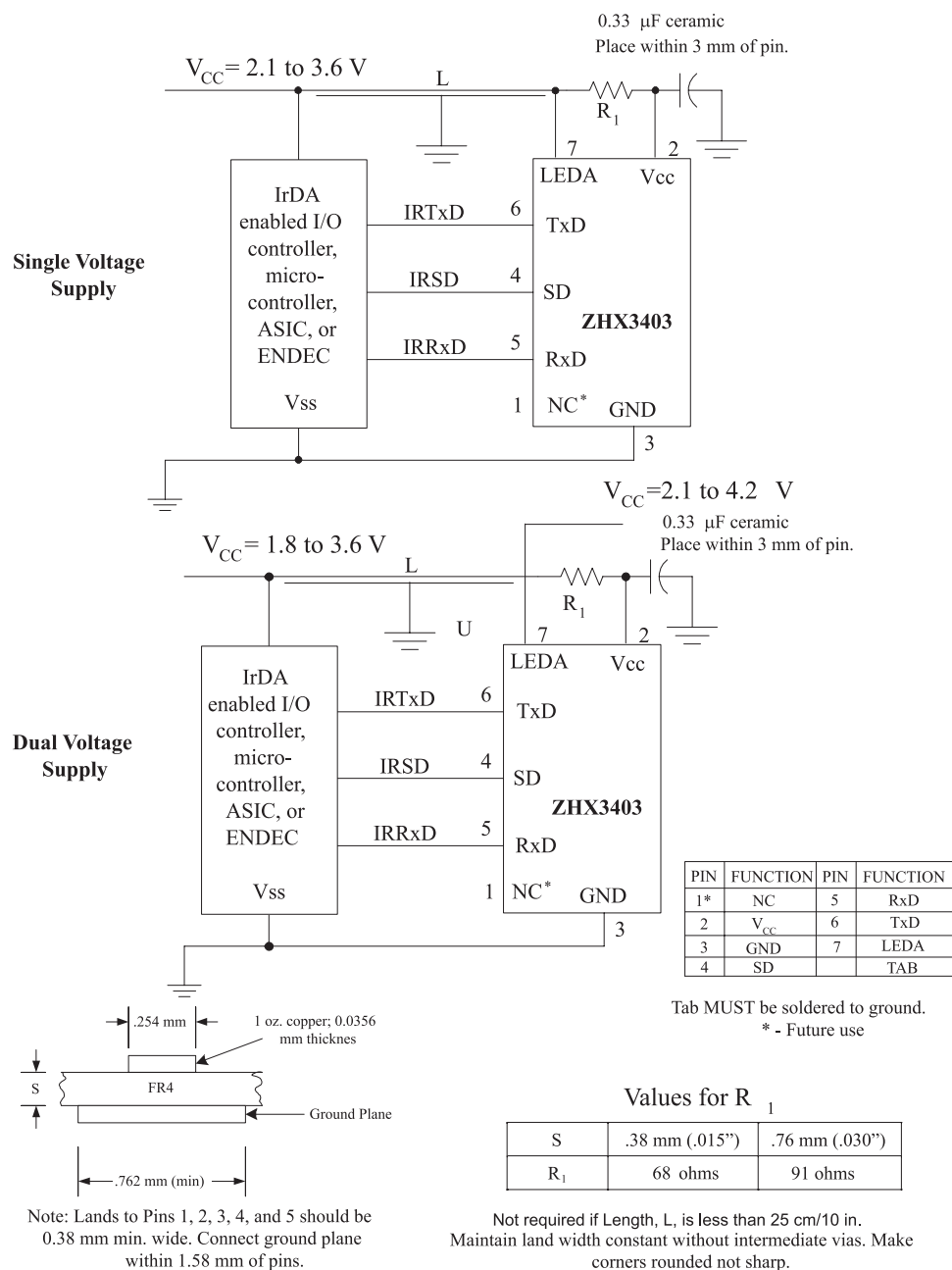


Figure 3. ZHX3403 Family Application Block Diagrams

Electrical and Timing Specifications

Table 2, Table 3, and Table 4 list the electrical and timing specifications.

Table 2. Absolute Maximum Ratings

Parameter	Symbol	Min	Max	Unit	Comment
Supply voltage	V_{CC}	-0.5	3.6	V	V_{CC} , GND
Supply voltage	V_{LED}	-0.5	4.4	V	
Input voltage	V_{IN}	GND-0.3	$V_{CC}+0.3$	V	TxD, SD
Output (Ext.) voltage	V_{OUT}	GND-0.3	$V_{CC}+0.3$	V	RxD
LED current (pulse)	I_{LED}		170	mA	20% duty cycle, $T_a=25\text{ }^{\circ}\text{C}$, $t_{ON}\leq 90\text{ }\mu\text{S}$
Storage temperature	T_{ST}	-40	100	$^{\circ}\text{C}$	
Solder temperature	T_{SOL}		230	$^{\circ}\text{C}$	See page 9.

Table 3. Recommended Operating Conditions

Parameter	Symbol	Min	Max	Unit
Supply voltage	V_{CC}	1.8	3.6	V
Supply voltage, LEDA	V_{LED}	2.1	4.2	V
Ambient operating temperature	T_{OP}	-30	85	$^{\circ}\text{C}$

Table 4. Electrical Characteristics

Parameter	Symbol	Condition	Min	Typical	Max	Unit	Remarks
High-level input voltage	V_{IH}		$0.75V_{CC}$			V	TxD, SD
Low-level input voltage	V_{IL}				0.4	V	TxD, SD
High-level output voltage	V_{OH}	$I_{OH}=20\text{ }\mu\text{A}$	$V_{CC}-0.3$			V	RxD
Low-level output voltage	V_{OL}	$I_{OL}=-400\text{ }\mu\text{A}$			0.3	V	RxD
Transmitter current	I_{LED}			100	140	mA	(MIR, MC power)
Transmitter current	I_{LED}			40	55	mA	(SIR, MC power)

Table 4. Electrical Characteristics (Continued)

Parameter	Symbol	Condition	Min	Typical	Max	Unit	Remarks
Listening current*	I_{CC}			6	10	μA	Device is active but not yet receiving
MIR receive current	I_{CC}			215	275	μA	1.15 Mbits/s
SIR receive current	I_{CC}			100	125	μA	115.2 Kbits/s
Shutdown current	I_{STB}			0.1		μA	$SD = V_{CC}$, $TxD = 0 V$
Rise/fall time SIR/ MIR	T_R, T_F	$C_{load} = 25 pF$	10		40	ns	
RxD pulse width	t_{PWA}	$SIR \leq 115.2 Kbps$	1.0		5	μs	Input pulse = 78 μs ; rise/fall time < 600 ns
RxD pulse width, alternate 3/16 th of pulse duration. See IrDA Physical Layer specs.	t_{PWA}	$SIR \leq 115.2 Kbps$	1.2		90	μs	Input pulse = 78 μs (3/16 * (1/2400))
RxD pulse width	t_{PWA}	MIR = 1.152 Mbps	200	220	700	ns	
Power shutdown time	T_{SD}			0.1	200	μs	
Startup time	T_{STU}			200		μs	
Latency	T_{RRT}			150		μs	
LED protection timeout			105	180	270	μs	Protects LED when TxD is left high
Delay to listen	T_{LM}		40			s	Time to change from receive to listen mode
Trans. radiant intensity SIR	I_E	$I_{LED} = 40 mA$	3.6			mW/sr	$\theta_h, \theta_v \leq (\pm 15^\circ)$
Trans. radiant intensity MIR	I_E	$I_{LED} = 100 mA$	9			mW/sr	$\theta_h, \theta_v \leq (\pm 15^\circ)$
Threshold irradiance SIR	E_{emin}	$V_{CC} = 3.3 V$			9	$\mu W/cm^2$	$\theta_h, \theta_v \leq (\pm 15^\circ)$
Threshold irradiance MIR	E_{emin}	$V_{CC} = 3.3 V$			22.5	$\mu W/cm^2$	$\theta_h, \theta_v \leq (\pm 15^\circ)$
Input irradiance	E_{emax}	$V_{CC} = 3.3 V$			500	mW/cm^2	$\theta_h, \theta_v \leq (\pm 15^\circ)$
Angle of half intensity	θ			20		$^\circ$	Hor. and vert.
Unless otherwise noted: $V_{CC} = 3.3 V$, $GND = 0 V$, $T_A = 25^\circ C$ * ZHX3403MA only							

Shutdown and Bandwidth Change

Simple power management and bandwidth switching are available by using a method similar to the “Legacy Mode” found in many FIR transceivers. Assertion of the SD pin high for a period of time exceeding 200 μ s places the module into shutdown mode whereby current consumption is reduced to 100 nA (typical). On the falling edge of this signal, the state of the TX pin is sampled and used to set receiver low bandwidth (TX=Low) or high bandwidth (TX=High) mode.

The ZHX3403 family powers on with the upper limit of the receiver bandwidth set to 115.2 Kbits/s operation. To set the bandwidth for operation at 1.15 Mbits/s, apply timings as shown in Table 5 and Figure 4 to the SD and the TX inputs.

► **Note:** The internal LED driver is disabled when SD is active and is not enabled until the next rising edge of TX. This ensures that the LED is not active during bandwidth adjustment.

It is recommended that the SD pin be connected to GND if the bandwidth adjustment and shutdown modes are not required.

Table 5. Shutdown and Bandwidth Control Timing

Symbol	Conditions	Minimum	Unit
T1	TXD low to SD setup time	200	ns
T2	SD high to TXD setup time	200	ns
T3	TXD high to SD low setup time	200	ns
T4	SD low to TXD low hold time	200	ns
Tpd	SD high to power down	200	μ s

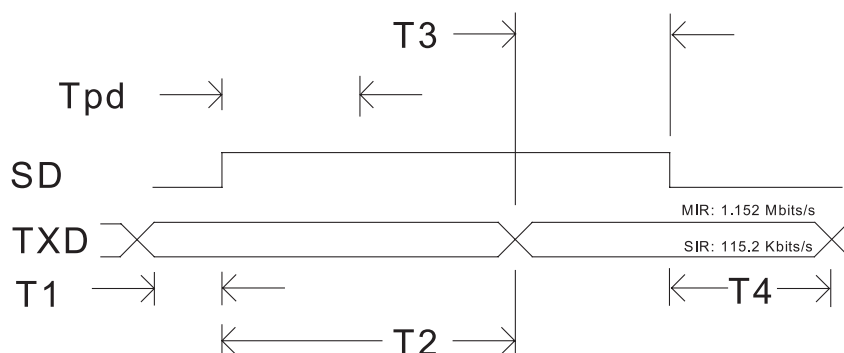


Figure 4. Shutdown and Bandwidth Control Timing

ZHX3403 Family Tape and Reel Specifications

Figure 5 shows the ZHX3403 family reel specifications, and Figure 6 shows the ZHX3403 family tape specifications.

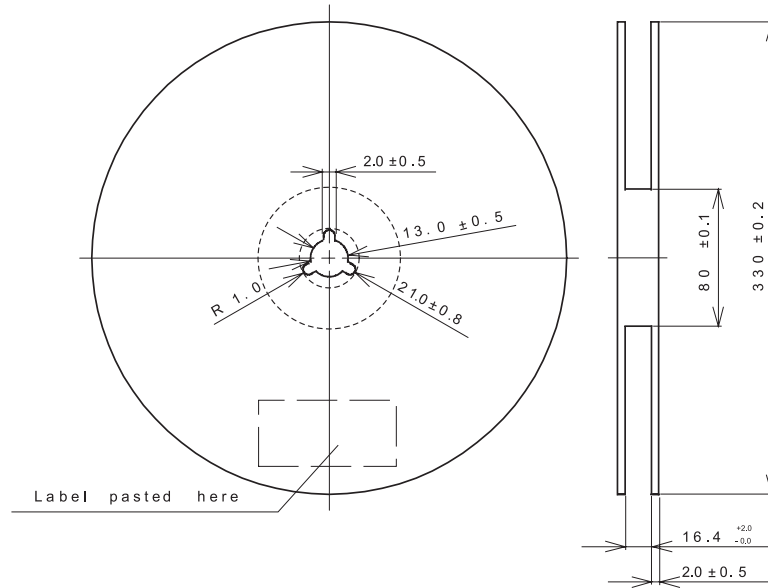


Figure 5. ZHX3403 Family Reel Specifications

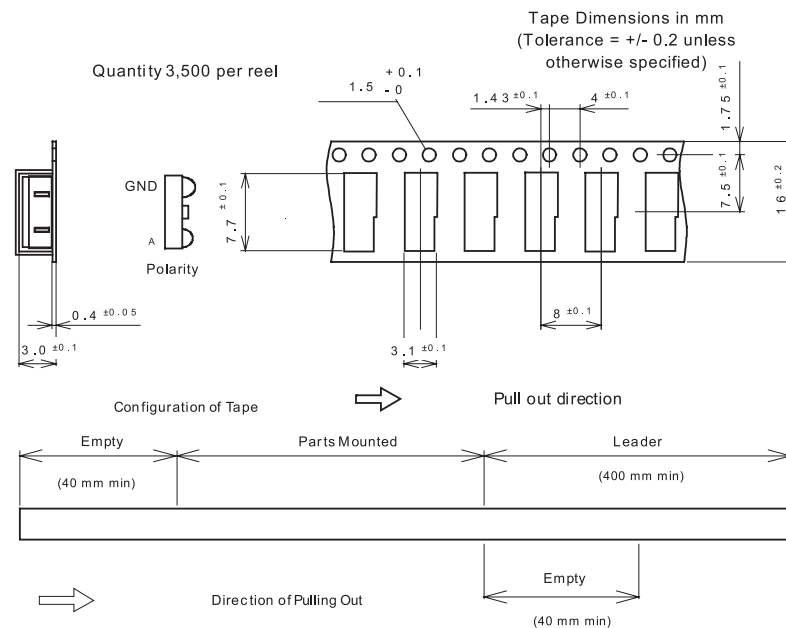


Figure 6. ZHX3403 Family Tape Specifications

ZHX3403 Family Soldering and Cleaning Recommendations

Follow these recommendations to maintain the performance of the ZHX3403 family of transceivers.

Reflow Soldering

- Reflow soldering paste is recommended.
- Preheat: 120~150 °C, 60 to 120 seconds
- Heating up and cooling down: 5 °C/second
- Maximum number of reflows: 2
- The temperature profile at the top surface of the ZHX3403 family of transceivers, shown in Figure 7, is recommended.

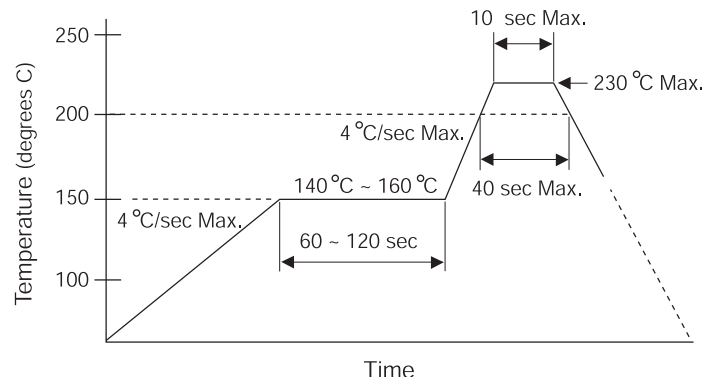


Figure 7. Temperature Profile for the Top Surface

Manual Soldering

- Use 63/37 or silver solder.
- Temperature at solder iron tip: no more than 280 °C
- Finish soldering within 3 seconds.
- Handle only after ZHX3403 has cooled off.

Cleaning

Perform cleaning under the following conditions:

- Cleaning agent: alcohol
- Temperature and time 30 seconds below 50 °C or 3 minutes below 30 °C
- Ultrasonic cleaning: below 20 W

Moisture Prevention Guidelines

To avoid moisture absorption during transportation and storage, ZHX3403 family reels are packed in aluminum envelopes (see Figure 8) that contain a desiccant with a humidity indicator. While this packaging is an impediment to moisture absorption, it is by no means absolute, and no warranty is implied. The user must store these parts in a controlled environment to prevent moisture entry. Please read the label on the aluminum bag for indicator instructions.

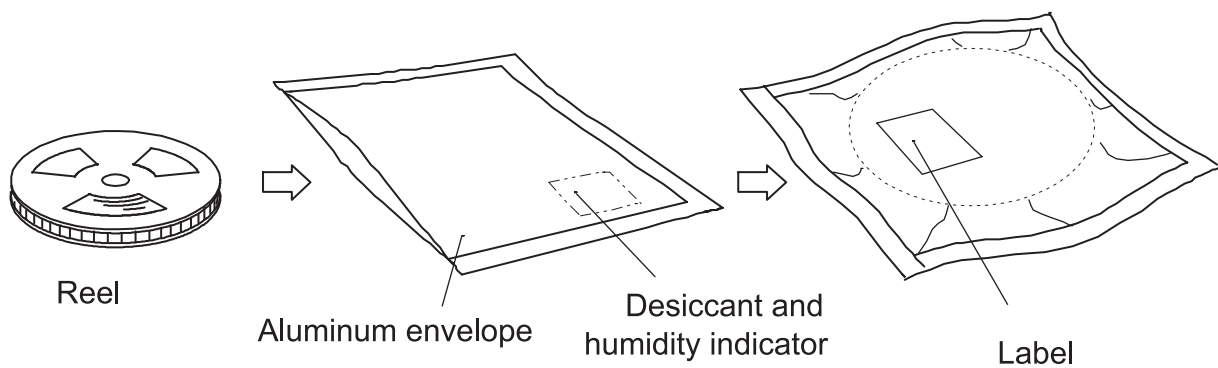


Figure 8. ZHX3403 Packaging

Baking

It is recommended that parts that have been stored over 12 months or unpacked over 72 hours be baked under the following guidelines.

Reels

60 °C for 48 hours or more

Loose Parts

- 100 °C for 4 hours or more
or
- 125 °C for 2 hours or more
or
- 150 °C for 1 hour or more

Mechanical Drawing

Figure 9 shows the mechanical specification for the ZHX3403 family of transceivers.

► **Note:** The ZHX3403 family of transceivers will be marked as follows
(implementation date to be determined):

ZHX3403MA = Z3403A

ZHX3403MB = Z3403B

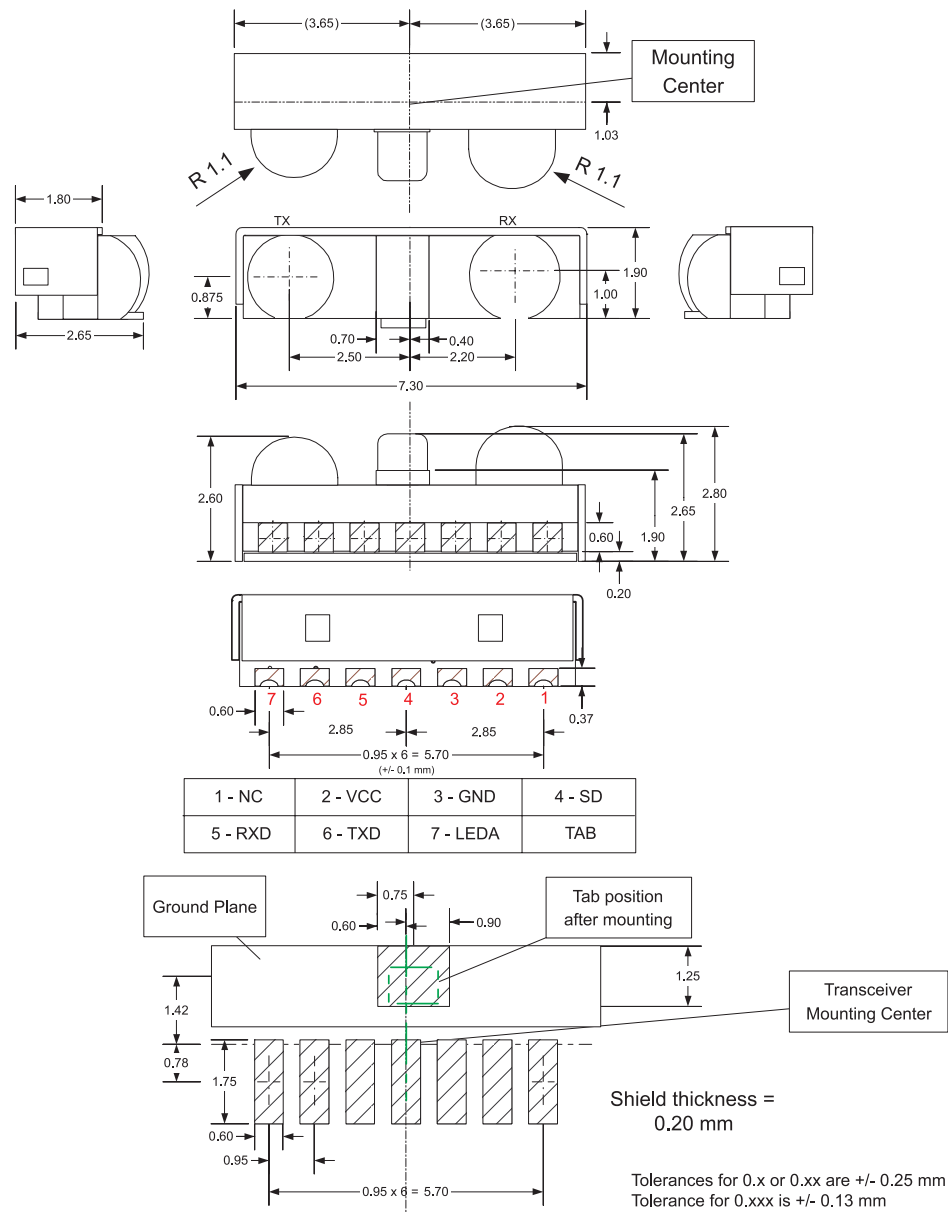


Figure 9. ZHX3403 Mechanical Drawing



Ordering Information

Use the following information to order the ZHX3403 family of transceivers:

ZHX3403MA012THTR	with AlwaysOn Listen	3500 per reel
ZHX3403MB012THTR	without AlwaysOn Listen	3500 per reel

Customer Feedback Form

If you experience any problems while operating this product, or if you note any inaccuracies while reading this product specification, please copy and complete this form, then mail or fax it to ZiLOG (see *Return Information*, below). We also welcome your suggestions!

Customer Information

Name	Country
Company	Phone
Address	Fax
City/State/Zip	email

Product Information

Serial # or Board Fab #/Rev #
Software Version
Document Number
Host Computer Description/Type

Return Information

ZiLOG
System Test/Customer Support
532 Race Street
San Jose, CA 95126-3432
Fax: (408) 558-8300
Email: tools@zilog.com

Problem Description or Suggestion

Provide a complete description of the problem or your suggestion. If you are reporting a specific problem, include all steps leading up to the occurrence of the problem. Attach additional pages as necessary.