

IQXO-82, -83

ISSUE 1; 19 JUNE 1997

Delivery Options

- Please contact our sales office for current leadtimes

Output Compatibility

- ECL 10kH (IQXO-82)
- Dual Complimentary ECL 10kH (IQXO-83)

Package Outline

- $14.0 \times 9.8 \times 3.35\text{mm}$ SMD (surface mount device)

Standard Frequency Stabilities

- $\pm 100\text{ppm}$ (inclusive of supply voltage variations over the operating temperature range)

Operating Temperature Range

- -10 to 70°C

Storage Temperature Range

- -55 to 125°C

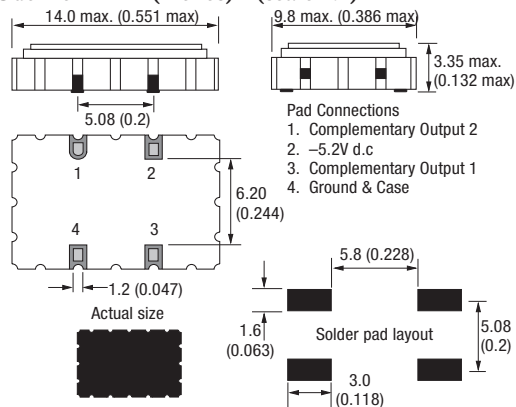
Marking

- Model number
- Frequency Stability Code
- Frequency
- Date code (Year/Week)

Minimum Order Information Required

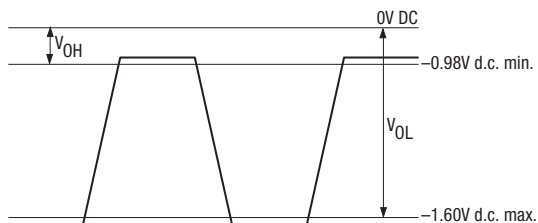
- Frequency + Model Number + Frequency Stability

Outline in mm (inches) - (scale 2:1)

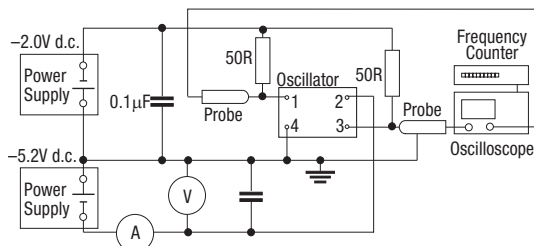


Note: Pin 1 = No connection on IQXO-82, Pin 3 = Output

Logic Levels

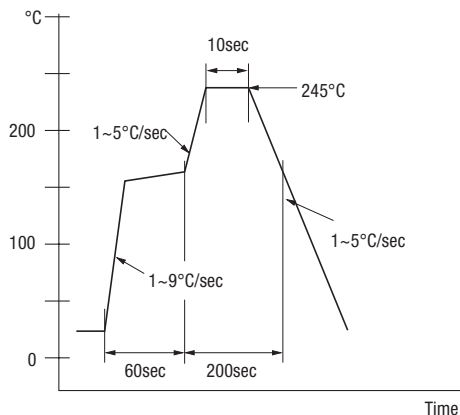


Test Circuit



Note: Pin 1 = No connection on IQXO-82

Typical Solder Condition - Infrared Reflow



Electrical Specification – maximum limiting values when measured in test circuit

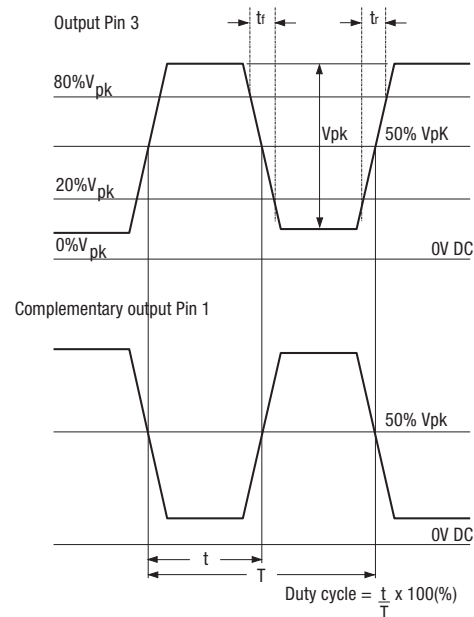
Frequency Range	Frequency Stability	Supply Voltage	Supply Current	Rise Time (t_r)	Fall Time (t_f)	Duty Cycle	Model Number
30.0 to 170.0MHz	$\pm 100\text{ppm}$	$-5.2\text{V} \pm 0.25\text{V}$	50mA	2ns	2ns	40/60%	IQXO-82, -83

Note: Both Complimentary outputs require terminating to either 270Ω to ground or 50Ω to -2.0V d.c

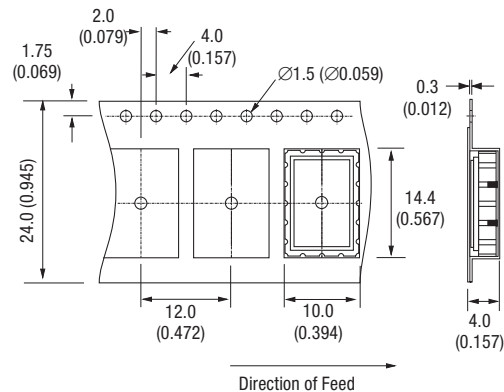
Ordering Example

Frequency _____ 125.0MHz
Model No _____ IQXO-83
Frequency Stability: C= $\pm 100\text{ppm}$ _____ C

Output Waveform



Outline in mm (inches) - Tape



Outline in mm (inches) - Reel (scale 1:8)

