

FM Transmitter for LCD TVs WMF-T02

Telecommunication component

OUTLINE

This small monophonic FM transmitter is mounted in LCD TVs as a built-in unit.



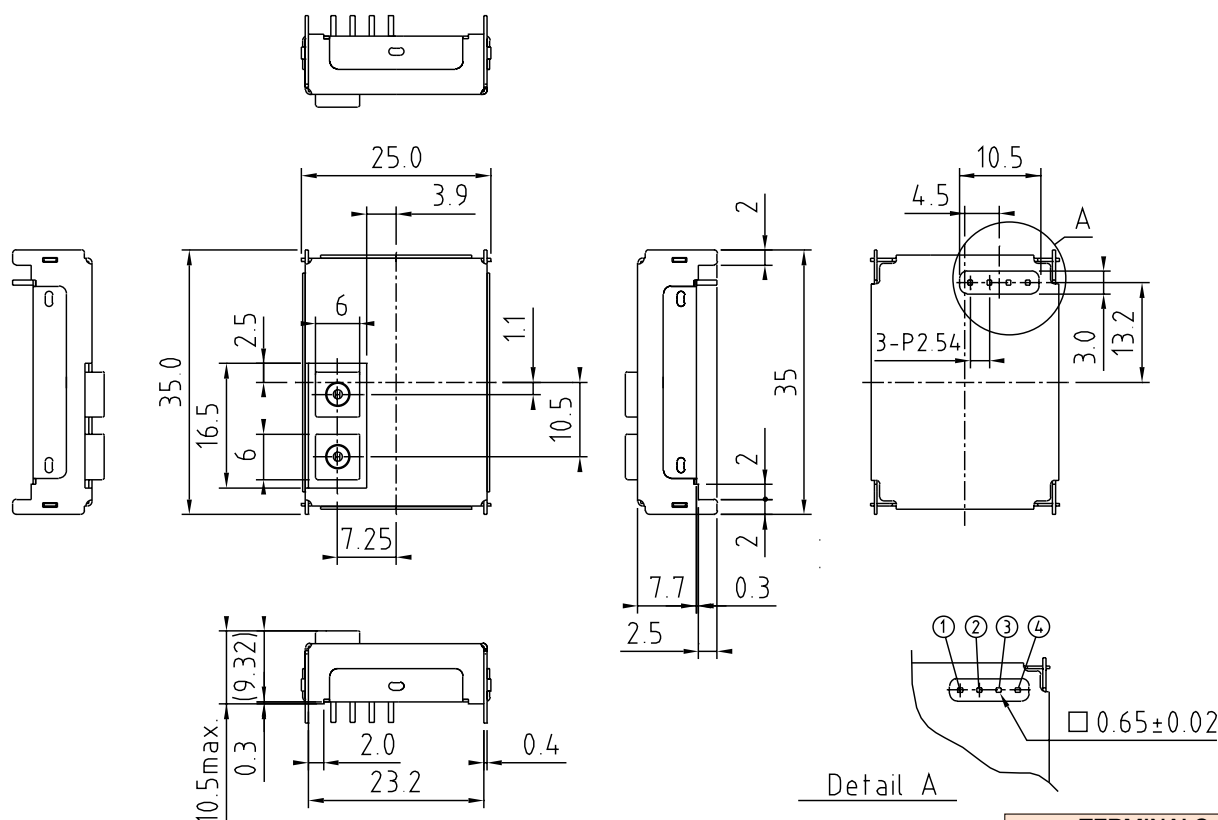
FEATURES

1. Small size (25×35×7.7).
2. A deviation of the transmitting frequency is small due to a temperature change.
3. Two-channel transmitting frequency are switchable by an electronic switch.
4. Owing to the extended frequency characteristic, this unit is applicable to stereo systems by mounting MPX externally.

SPECIFICATIONS

Item	Specifications
Rated Supply Voltage	5V
Current Consumption	23±10mA
Operating Ambient Temperature	-20~60°C
Transmitting Frequency	Lch : 76.7MHz±20kHz Hch : 78.7MHz±20kHz (inclusive of temperature)
Transmitting Output	90±5dBμ
Modulation Deviation Sensitivity	Lch : 12 ⁺⁸ / ₋₆ kHz (1kHz, 40mVrms) Hch : 10 ⁺⁸ / ₋₆ kHz
Frequency Characteristic	±3dB (100Hz~60kHz, 40mVrms)
S/N Ratio	40dB or Over (1kHz, 40mVrms)
Distortion Factor	Less than 3% (1kHz, 40mVrms)
Channel Select Voltage	Lch : GND, Hch : 5.0V

DIMENSIONS



TERMINALS
1. RF OUT
2. +B
3. AUDIO IN
4. CHANNEL SELECT

Unit : mm
General tolerance : ±0.5