

ULB Series Glass Plate Liquid Level Gauge

ULB-FF Anti-corrosion Glass Plate Liquid Level Gauge

Summary

ULB-FF Anti-corrosion Glass Plate Liquid Level Gauge adopts one kind of material that can effectively make the Gauge avoid being corroded by corrosive medium and glass plate becoming indistinct. It is suitable for strong corrosive liquid level indication in petroleum, chemical, natural gas industries, etc.

Structure principle

According to connected vessel principle, two flanges at both end of the Gauge are connected directly to the vessel. The actual liquid level can be directly read through the glass plate. With the transparent separating film, the glass can be protect from being corroded by strong corrosive liquid.



Main technical parameters

Measuring range (the distance between the flanges' center L): 500, 800, 1100, 1400, 1700mm;

Visual range: $H=L-260$;

Nominal pressure: 4.0MPa;

Operating temperature: 0-180° C;

Tracing (heating) steam pressure: 0.6MPa;

Tracing steam jacket joint: ZG3/8"(external thread);

Connecting flange: HG5016-58, DN20 raised face flange

HG5010-58, DN20 plain flange

JB/T82.1-94, DN20 plain flange

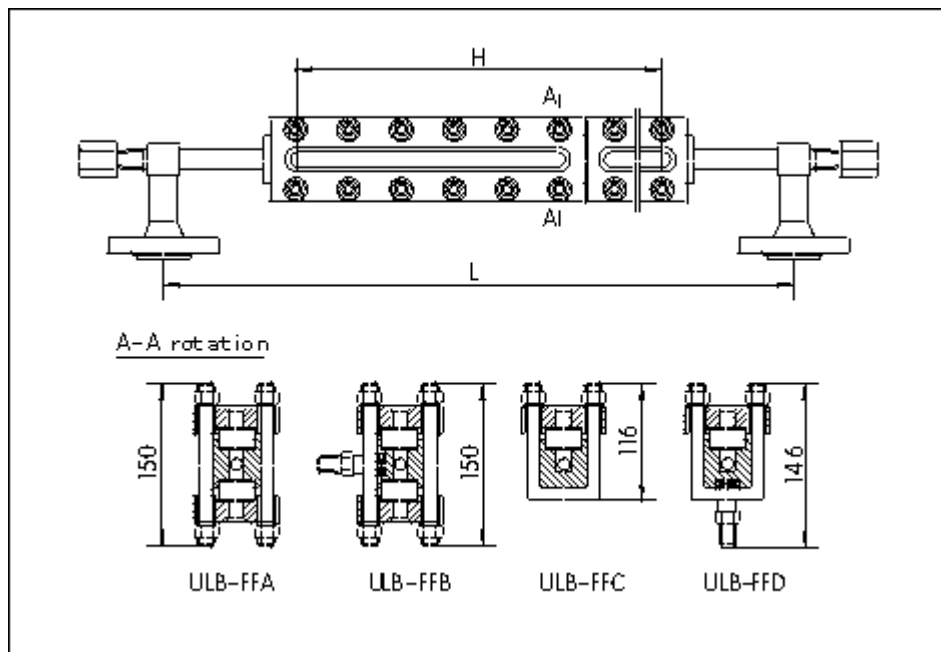
JB/T82.2-94, DN20 raised face flange;

Liquid contacting material: carbon steel or 1Cr18Ni9Ti

Specification

Model	Name	Application
ULB-FFA	Transparent anticorrosion glass plate level Gauge	Colorless, transparent liquid and in luminous place
ULB-FFB	Transparent anticorrosion glass plate level Gauge with tracing steam	sticky, easily to be frozen medium
ULB-FFC	Reflection anticorrosion glass plate level Gauge	Colored liquid and in luminous place
ULB-FFD	Reflection anticorrosion glass plate level Gauge with tracing steam	Sticky, easily to be frozen medium

Outline Sketch and Installation Dimensions



ULB-FF Anticorrosive Glass Plate Liquid Level Gauge Outline and Structure Sketch

Application notice

When the bolts loosening appears during the process of transportation, all the bolts should be tightened according to actual situation.

When checking or installing the glass plates, bolts should be tightened in order and cross way. Exerting force evenly.

When glass plates are needed to be changed, sealing plates should be changed together.

Order notice

Model and specs:

Measuring range:

Operating pressure:

Operating temperature:

Flange standard:

Specially required liquid contacting material brand:

Other requirements: