

ULB Series Glass Plate Liquid Level Gauge

ULB-03 Glass Plate Liquid Level Gauge

Summary

ULB series 01, 02, 03 types glass plate liquid level Gauges guide fluid from vessel to external glass plate level Gauge being based on connectivity so that actual liquid level can be read through clear class.



Structure principle

ULB-03 type Gauge is designed and manufactured on base of absorbing respective merits both ULB-01 type and ULB-02 type. According to the law of connected vessels, container's liquid level can be directly read through the Gauge.

Safe steel balls are installed in both upper valve and lower valve. In case the glass plate is broken, with the liquid pressure, the steel balls can shut up automatically the fluid channel so as to prevent the fluid from leaking excessively.

At the bottom end of the plate Gauge, a M12*1.25 clogging screw is installed so that sampling, flushing and draining residual liquid can be done through it.

Main technical parameters

Measuring range (the distance between the flanges' center L): 500, 800, 1100, 1400, 1700mm;

Visual range: $H=L-260$;

Nominal pressure: 4.0MPa;

Operating temperature: $0^{\circ}\text{C} - 250^{\circ}\text{C}$;

Pressure for needle valve to automatically close: 0.3 MPa;

Tracing (heating) steam pressure: 0.6MPa;

Tracing steam jacket joint: ZG3/8"(external thread);

Connecting flange: HG5016-58, DN20 raised face flange

HG5010-58, DN20 plain flange

JB/T82.1-94, DN20 plain flange

JB/T82.2-94, DN20 raised face flange;

Liquid contacting material: Carbon steel or 1Cr18Ni9Ti;

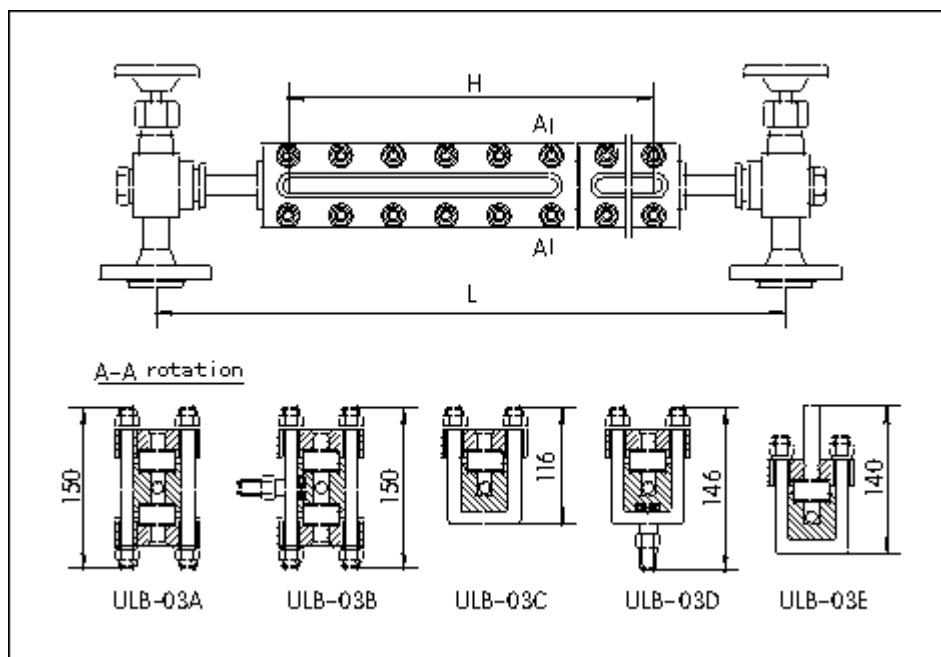
Model and specs

Specification

Model	Name	Application
ULB-03A	Transparent glass plate level Gauge	For colorless transparent liquid and in luminous place
ULB-03B	Transparent glass plate level Gauge with tracing steam	For sticky, easily to be frozen fluid

ULB-03C	Reflection glass plate level Gauge	For colored liquid and in luminous place
ULB-03D	Reflection glass plate level Gauge with tracing steam	For sticky, easily to be frozen fluid
ULB-03E	Frost-proof glass plate level Gauge	Low temperature fluid

Outline and dimension



Outline and structure sketch of ULB-03 glass plate liquid level Gauge

Application notice

When the bolts loosening appears during the process of transportation, all the bolts should be tightened according to actual situation.

When checking or installing the glass plates, bolts should be tightened in order and cross way. Exerting force evenly.

When glass plates are needed to be changed, sealing plates should be changed together.

Order notice

Model and specs:

Measuring range:

Operating pressure:

Operating temperature:

Flange standard:

Specially required liquid contacting material brand:

Other requirements: