

ULB Series Glass Plate Liquid Level Gauge

ULB-02 Glass Plate Liquid Level Gauge

Summary

ULB series 01, 02, 03 types glass plate liquid level Gauges guide fluid from vessel to external glass plate level Gauge being based on connectivity so that actual liquid level can be read through clear class.



Structure principle

ULB-01 Glass Plate Liquid Level Gauge connects the container with ZG3/4" external thread. According to the connectivity principle, the liquid level inside of container can be read directly through the Gauge. It features reliable flange seal and convenient installation.

At the both ends of the Gauge, it connects container and valves with ZG1/2" external thread for sampling, flushing or draining residual liquid.

Main technical parameter

Measuring range (the distance between the flanges' center): 500, 800, 1100, 1400, 1700mm;

Visual range: H=L-260;

Nominal pressure: 4.0MPa;

Operating temperature: 0° C - 250° C;

Tracing (heating) steam pressure: 0.6MPa;

Tracing steam jacket joint: ZG3/8"(external thread);

Connecting flange: HG5016-58, DN20 raised face flange

HG5010-58, DN20 plain flange

JB/T82.1-94, DN20 plain flange

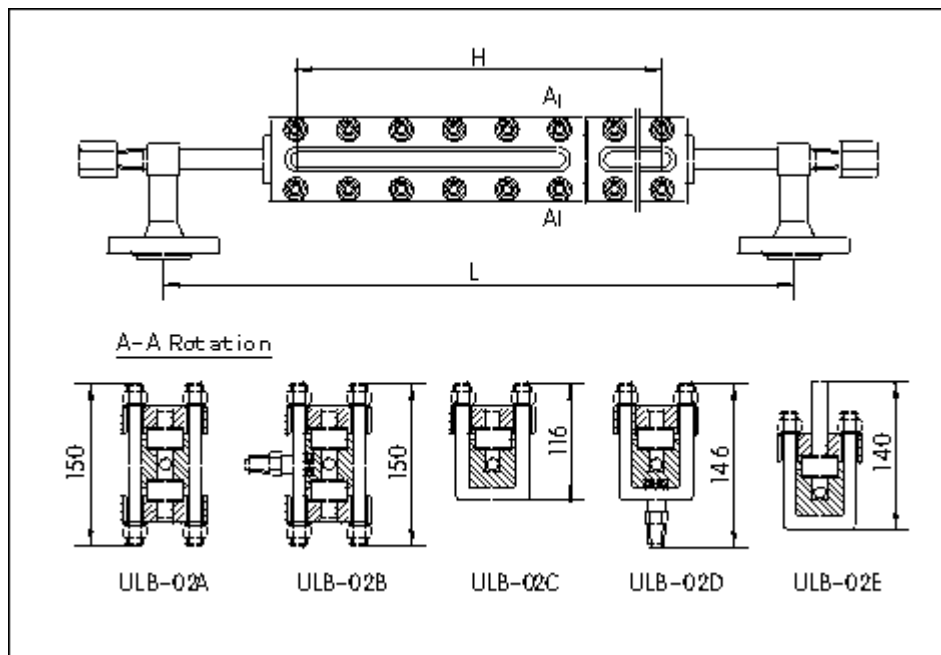
JB/T82.2-94, DN20 raised face flange;

Liquid contacting material: Carbon steel or 1Cr18Ni9Ti;

Specification

Model	Name	Application
ULB-02A	Transparent glass plate level Gauge	For colorless transparent liquid and in luminous place
ULB-02B	Transparent glass plate level Gauge with tracing steam	For sticky, easily to be frozen fluid
ULB-02C	Reflection glass plate level Gauge	For colored liquid and in luminous place
ULB-02D	Reflection glass plate level Gauge with tracing steam	For sticky, easily to be frozen fluid
ULB-02E	Frost-proof glass plate level Gauge	Low temperature fluid

Outline and installation sketch



Outline and structure sketch of ULB-02 Glass Plate Liquid Level Gauge

Application notice

When the bolts loosening appears during the process of transportation, all the bolts should be tightened according to actual situation.

When checking or installing the glass plates, bolts should be tightened in order and cross way. Exerting force evenly.

When glass plates are needed to be changed, sealing plates should be changed together.

Order notice

Model and specs:

Measuring range:

Operating pressure:

Operating temperature:

Flange standard:

Specially required liquid contacting material brand:

Other requirements: