

ULG-SR Flexible Connected Double Color Quartz Glass Tube Liquid Level Gauge

Summary

ULG-SR flexible connected double color quartz glass tube liquid level Gauge is one kind of new generation product developed and manufactured by Dandong Top Electronics Instrument Co., Ltd, being improved on base of ULG-S two color quartz glass tube liquid level Gauge. It adopts flexible connecting and hinge bearing structure, by which the unneeded accompany torque and inner stress between the container flange and Gauge flange being generated by manufacturing and mounting error can be relieved effectively so that the security and reliability can be assured.

Structure principle

ULG-SR series flexible connected double color quartz tube liquid level Gauge is added a flexible connecting supporting component. (see figure 1)

When Gauge's flange is connected to the flange of vessel, pin roll 1 can nod up and down, while pin roll 2 can rotate fore and back in horizontal plane. Mounting distance (space length) can adjusted by adjusting nuts. So, the Gauge is installed in free condition.

Main technical parameters

Measuring range (the distance between the flanges' center L): 500, 800, 1100, 1400, 1700mm;

Visual range: $H=L-300$;

Nominal pressure: $\leq 4.0\text{MPa}$;

Operating temperature: $-50-450^{\circ}\text{C}$;

Pressure for needle valve to automatically close: $\geq 0.3\text{MPa}$;

Tracing (heating) steam pressure: $\leq 0.6\text{MPa}$;

Tracing steam jacket joint: ZG1/2"(external thread);

Connecting flange: JB/T82.1-94 (plain flange);

JB/T82.2-94 (raised face flange);

Nominal diameter: DN20;

Flushing and draining outlet: M12*1.5, female thread

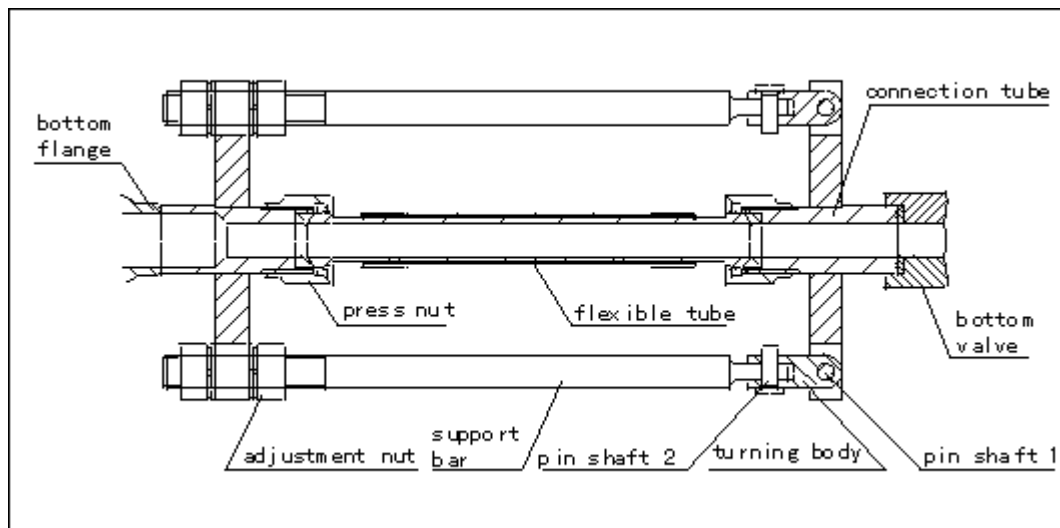
Liquid contacting material: carbon steel or 1Cr18Ni9Ti

Model Selection Sheet

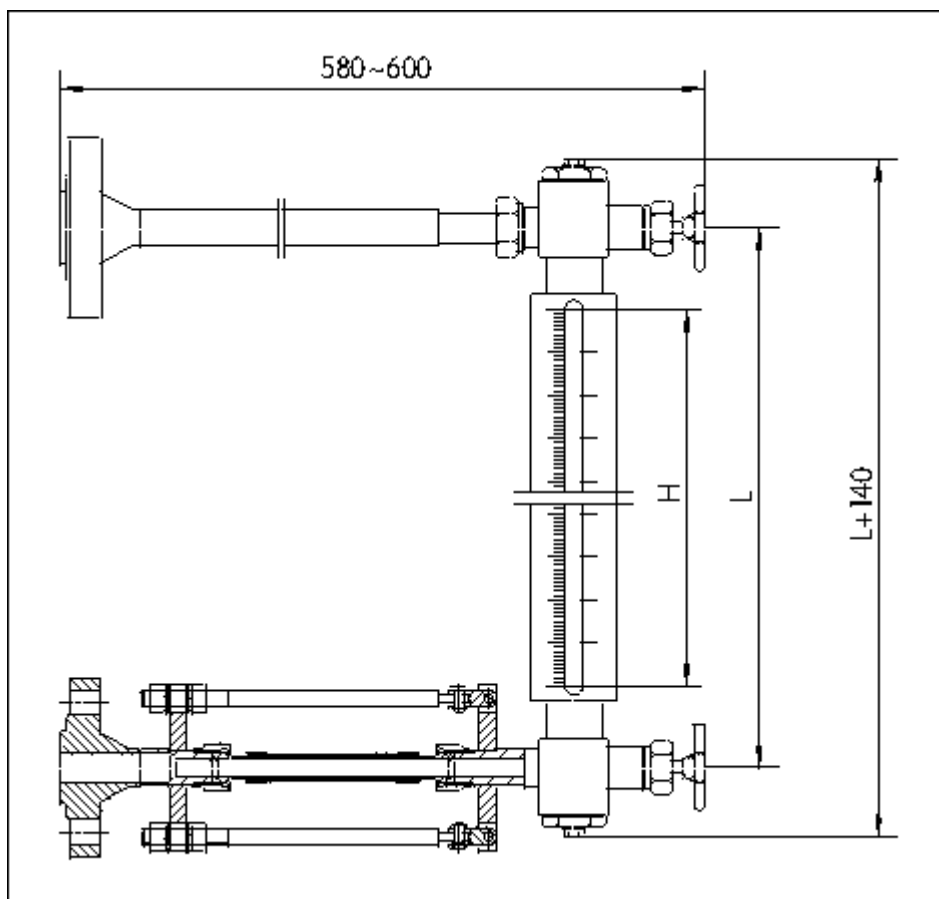
Model	Specification code			Contents
ULG-SR				Flexible connection double colors quartz glass tube level Gauge
	C			Material of touching liquid: carbon steel
	P			Material of touching liquid: 1Cr18Ni9Ti
		W		With tracing steam
		D		Without tracing steam
			Y	Measuring level
			J	Measuring interface level
ULG-SR	<input type="checkbox"/>	<input type="checkbox"/>	<input type="checkbox"/>	

Example: ULG-STCWY means side mounted, liquid contacting material is carbon steel, with tracing steam, measuring liquid level two color quartz glass tube liquid level Gauge.

Outline Sketch and Installation Dimensions



flexible connection schematic diagram



ULG-SR flexible connection two color quartz glass tube liquid level Gauge outline and structure.

Order notice

Model and specs:

Measuring range:

Operating pressure:

Operating temperature:

Medium density: (when measuring interface level, two densities should be supplied)

Flange standard:

Specially required liquid contacting material brand:

Other requirements: