

U Series

**RFI Filter
for Power Factor Corrected
Power Supplies**



**UL Recognized
CSA Certified
VDE Approved**

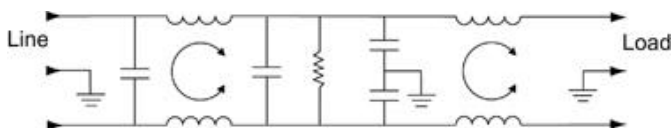
U Series

Corcom's U series is designed to meet the RFI needs created by power factor corrected power supplies. This high performance filter offers a high impedance circuit to mismatch the power supply's impedance characteristics. The economical design allows superior performance at a reasonable price.

The PC board mountable version has a low profile case which adapts well to most modular power converter applications.

All models meet low leakage current requirements of VDE portable equipment, and (120 Volt) UL544 and UL2601 nonpatient medical equipment.

Electrical Schematic



Resistor location for reference only.



Specifications

Maximum leakage current, each line-to-ground
 @ 120VAC 60 Hz: .30 mA
 @ 250VAC 50 Hz: .50 mA

Hipot rating (one minute):
 line-to-ground 2250 VDC
 line-to-line 1450 VDC

Operating frequency: 50/60 Hz

Rated voltage: 120/250 VAC

Rated current: 6.5 amps @ 120 VAC
 6.5 amps @ 250 VAC

Minimum insertion loss in dB:

Line-to-ground in 50 ohm circuit

Current Rating	Frequency-MHz							
	.05	.1	.15	.5	1	5	10	30
6A	4	30	40	70	70	70	65	50

Line-to-line in 50 ohm circuit

Current Rating	Frequency-MHz							
	.05	.1	.15	.5	1	5	10	30
6A	10	35	45	70	70	70	65	55

Metric shown in italics.

Terminals: $\frac{.250}{6.35}$ (5) Holes: $\frac{.07}{1.8}$ Dia.(4) Slot: $\frac{.07 \times .16}{1.8 \times 4.1}$ Mounting holes: $\frac{.188}{4.78}$ Dia.(2)

Technical drawing of a shaft assembly showing dimensions for a shaft with a keyway, a pulley, and a gear. The shaft has a diameter of .157 Dia. (3) and a keyway of .75 Dia. (3). The pulley has a diameter of .075 Dia. (6) and a keyway of .26 Dia. (6). The gear has a diameter of .52 Dia. (6) and a keyway of .13 Dia. (6). Dimensions include distances between components and overall lengths.

Metric shown in italics.

Part No.	A (max)	B (max)	C (max)	D $\pm .015$ $\pm .38$	E (max)
6EUP	<u>4.7</u> 119.4	<u>2.51</u> 63.8	<u>1.22</u> 31.0		
6EU1	<u>4.95</u> 125.73	<u>2.27</u> 57.66	<u>1.8</u> 45.72	<u>4.06</u> 103.12	<u>4.47</u> 113.54

Consult your local Corcom sales representative for pricing.



6EUP
6EU1