

TELECOMMUNICATION DRY COUPLING TRANSFORMER DESIGNED TO OPERATE AT A MAX LEVEL OF +7dBm AND TO REFLECT A PRIMARY SOURCE IMPEDANCE OF APPROXIMATELY 4K Ω WITH 600 Ω LOAD ON SECONDARY

A. Electrical Specifications (@ 25 ° C)

1. Pri Source Impedance;
4K Ω \pm 10% 300 Hz to 3.5 KHz, 0 dBm
2. Sec Load Impedance; 600 Ω
3. Operating Level; -45 dBm to +7 dBm
4. Insertion Loss;
1.5 dB MAX @ 1 KHz, 0 dBm
5. Frequency Response (relative to 1 KHz);
 \pm 0.5 dB @ 300 Hz to 3.5 KHz, 0 dBm
6. Total Harmonic Distortion; 0.5% MAX @ 300 Hz to 3.5 KHz, 0 dBm
7. Longitudinal Balance; 60 dB MIN @ 200 Hz to 4 KHz
8. DC Resistance;
(1-3) = 365 Ω MAX
(4-6) = 60.5 Ω MAX
9. Turns Ratio; (1-3) : (4-6) = 1 : 0.409 \pm 2%
10. Dielectric Strength;
1500 Vrms, 1 minute @ Pri to Sec, Pri to Core
1000 Vrms, 1 minute @ Sec to Core



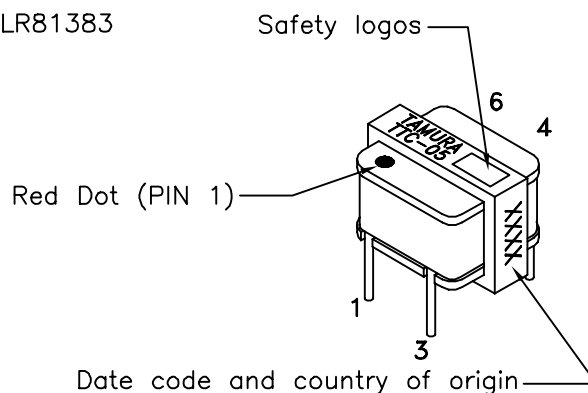
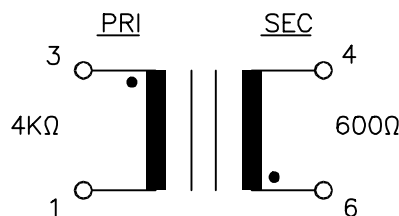
MODEL NUMBER

TTC-05

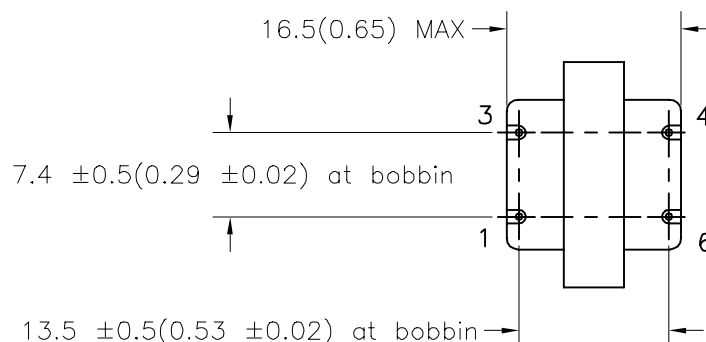
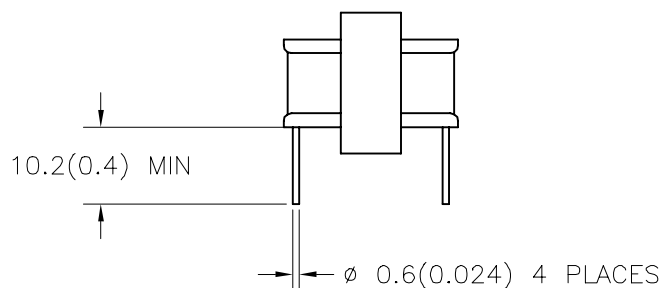
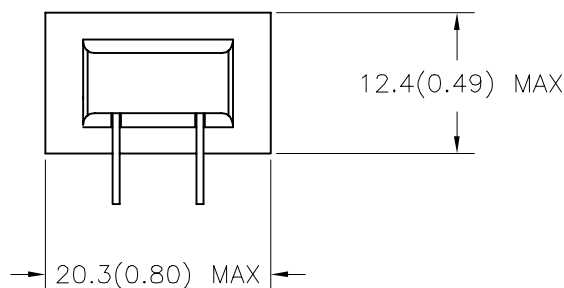
B. Marking; TTC-05, TAMURA, date code, country of origin and safety agency logos

C. Safety: CSA C22.2 No. 66-M1988 File No. LR81383
UL 1863 File No. E142035

D. Schematic Diagram



E. Mechanical Specifications



TRCELECTRONICS, INC.

"Authorized Distributor"

135 Pasadena Ave.

Lodi, NJ 07644 USA

Tel: (973) 779-8282
Fax: (973) 779-1490
sales@trcelectronics.com
http://www.trcelectronics.com

TOLERANCES (mm)
$\leq 4 \pm 0.2$
$4 \leq 20 \pm 0.3$
$20 \leq 50 \pm 0.4$

PREPARED BY:

K. Brennan

ENGINEER:

T. Shiozawa

QUALITY CONTROL:

V. Casey

APPROVED:

V. Casey

DWG CONTROL NO.
P-A1-10521
ACAD\TTC\A1105211.DWG

REV
A

TELECOMMUNICATION COUPLING
TRANSFORMER

TAMURA CORPORATION OF AMERICA

TTC-05

MODEL SPECIFICATION

DIM: mm(in) SCL: NONE SH: 1 OF 1

PROPRIETARY NOTICE: THIS DRAWING PRINT OR DOCUMENT AND SUBJECT MATTER DISCLOSED HEREIN ARE PROPRIETARY ITEMS TO WHICH TAMURA RETAINS THE EXCLUSIVE RIGHT OF DISSEMINATION, REPRODUCTION, MANUFACTURE AND SALE. THIS DRAWING, PRINT OR DOCUMENT IS SUBMITTED IN CONFIDENCE FOR CONSIDERATION BY THE RECIPIENT ALONE UNLESS PERMISSION FOR FURTHER DISCLOSURE IS EXPRESSLY GRANTED IN WRITING.