

ISSUE 2
REVISED AND
REDRAWN ON
CAD/CAM
01/08/92 HA

ISSUE 3
TEMECULA
WAS CARSON
01/26/93 TS

ISSUE 4
ADDED DCM21-PC
MICROTRAN
AND SAFETY
01/20/96 TS

Tel: (973) 779-8282
Fax: (973) 779-1490
sales@trcelectronics.com
http://www.trcelectronics.com

TRCELECTRONICS, INC.
"Authorized Distributor"
135 Pasadena Ave.
Lodi, NJ 07644 USA

TOLERANCES (mm)

≤ 4	± 0.2
4 ≤ 20	± 0.3
20 ≤ 50	± 0.4

PREPARED BY:

K. Brennan

ENGINEER:

T. Shiozawa

QUALITY CONTROL:

V. Casey

APPROVED:

V. Casey

TELECOMMUNICATION DRY COUPLING TRANSFORMER DESIGNED TO OPERATE AT A MAX LEVEL OF +7dBm AND TO REFLECT A PRIMARY SOURCE IMPEDANCE OF APPROXIMATELY 600ΩCT WITH 600ΩCT LOAD ON SECONDARY

A. Electrical Specifications (@ 25 ° C)

1. Pri Source Impedance; 600Ω CT
2. Sec Load Impedance; 600Ω CT
3. Operating Level; -45 dBm to +7 dBm
4. Insertion Loss;
1.4 dB MAX @ 1 KHz, 0 dBm
5. Frequency Response;
±0.5 dB 300 Hz to 3.5 KHz @ 0 dBm
6. Primary Impedance;
600 Ω +15%, -5% @ 300 Hz to 3.5 KHz, 0dBm
600 Ω +10%, -5% @ 500 Hz to 2.5 KHz, 0dBm
7. Longitudinal Balance;
60 dB MIN @ 200 Hz to 1 KHz
40 dBm MIN @ 4 KHz
8. DC Resistance;
(1-3) = 44 Ω ±20%
(4-6) = 56 Ω ±20%
9. Turns Ratio; (1-3) : (4-6) = 1 : 1.00 ±2%
10. Dielectric Strength;
1500 Vrms 1 minute @ Pri to Sec, and Pri to Core
1000 Vrms 1 minute @ Sec to Core
11. Total Harmonic Distortion;
0.5% MAX @ 300 Hz to 3.5 KHz, 0 dBm
12. Induced Voltage; (1-3) 250 Vrms 5 KHz 1 minute

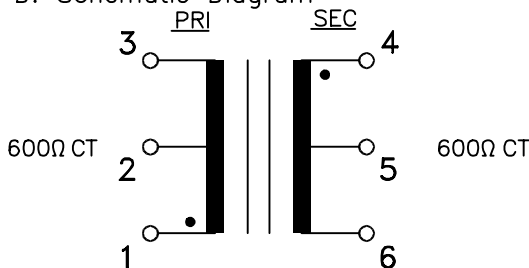
B. Marking; TTC-108, TAMURA, DCM21-PC, MICROTRAN, safety agency logos,

196-date code and country of origin

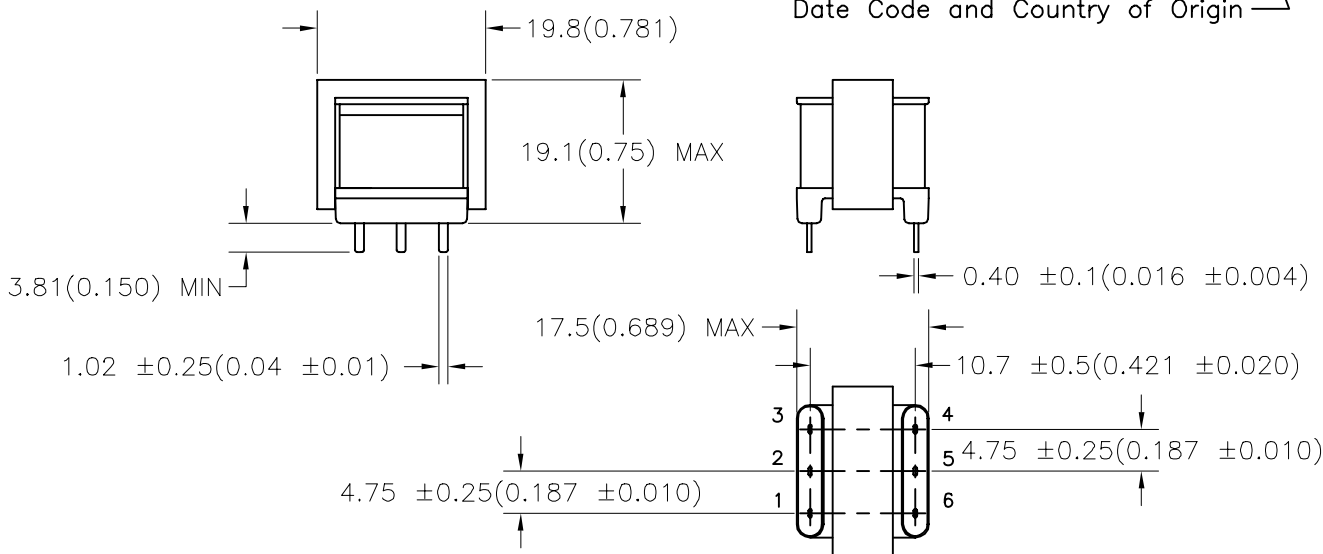
C. Safety; CSA-22.2 No. 66-M1988 File No. LR81383

UL 1863 File No. E142035

D. Schematic Diagram



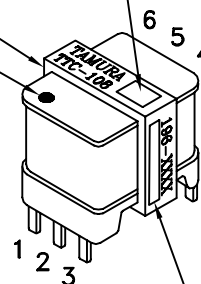
E. Mechanical Specifications



UL# E142035

MICROTRAN and DCM21-PC
Red Dot PIN 1

Safety logos



Date Code and Country of Origin

DWG CONTROL NO.	REV
P-A1-10017	C
ACAD\TTC\A1100171.DWG	
CONTENTS OF THIS DRAWING ARE SUBJECT TO CHANGE WITHOUT PRIOR NOTICE	

TELECOMMUNICATION COUPLING TRANSFORMER
TAMURA CORPORATION OF AMERICA
43352 BUSINESS PARK DRIVE, TEMECULA, CA. 92590-6624

TTC-108

MODEL SPECIFICATION

DIM: mm(in) SCL: 1/1 SH: 1 OF 1

PROPRIETARY NOTICE: THIS DRAWING PRINT OR DOCUMENT AND SUBJECT MATTER DISCLOSED HEREIN ARE PROPRIETARY ITEMS TO WHICH TAMURA RETAINS THE EXCLUSIVE RIGHT OF DISSEMINATION, REPRODUCTION, MANUFACTURE AND SALE. THIS DRAWING, PRINT OR DOCUMENT IS SUBMITTED IN CONFIDENCE FOR CONSIDERATION BY THE RECIPIENT ALONE UNLESS PERMISSION FOR FURTHER DISCLOSURE IS EXPRESSLY GRANTED IN WRITING.

MODEL NUMBER

TTC-108