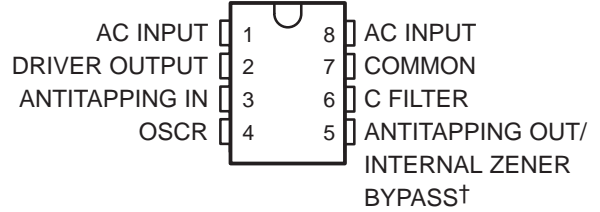


TCM1501B, TCM1506B, TCM1512B TCM1531, TCM1532, TCM1536, TCM1539 TELEPHONE TONE-RINGER DRIVERS

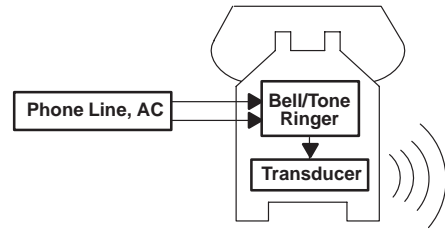
SCTS020 – MARCH 1986 – REVISED APRIL 1987

- Electronic Replacement for Electromechanical Telephone Bell When Used With Transducer
- Designed to Meet or Exceed FCC Part 68 Class B Ringer Requirements
- Low-Cost External Component Requirements
- Low External Component Count
- High Standby Input Impedance 1 M Ω Typ
- Low Ringer Equivalency Number < 1 Typ
- Single-Ended High-Voltage Output Compatible With Piezo Transducer or Transformer-Coupled Speaker
- Reliable BIDFET[‡] Process Technology Provides Efficient High-Voltage Operation
- On-Chip High-Voltage Full-Wave Diode Bridge Rectifier and Output Voltage Regulator
- On-Chip Circuitry Provides Ring Rejection of Rotary Dial Transients, Lightning, and Induced High-Voltage Transients
- On-Chip Thyristor Coupled With Additional External Components Provides Enhanced Rejection of Dial Pulses
- TCM1501B, TCM1512B, and TCM1506B Are Improved Direct Replacements for TCM1501A, TCM1512A, and TCM1506A, Respectively
- Requires Only a Single-Value Oscillator Resistor (Eliminates Binning Codes of the TCM15xxA Series)

P PACKAGE
(TOP VIEW)



† Antitapping output for TCM1531, TCM1532, TCM1536, and TCM1539. Internal zener bypass for B-suffix versions.



TYPICAL CHARACTERISTICS
TELEPHONE TONE RINGER DRIVER FAMILY

PART NO.	NORMAL OUTPUT CENTER FREQUENCY (Hz)	WARBLE RATIO ($f_H:f_L$)	NORMAL WARBLE FREQ. (Hz)
TCM1501B, TCM1531	2000	8:7	7.8
TCM1512B, TCM1532	1250	8:7	9.8
TCM1506B, TCM1536	500	5:4	7.8
TCM1539	2000	5:4	31.2

description

The TCM1501B, TCM1506B, TCM1512B, TCM1531, TCM1532, TCM1536, and TCM1539 are monolithic integrated circuit telephone tone-ringer drivers that, when coupled with an appropriate transducer, replace the electromechanical bell. These devices are designed using BIDFET technology for use with either a Piezo transducer or an inexpensive transformer-coupled speaker to produce a pleasing tone composed of a high frequency (f_H) alternating with a low frequency (f_L) resulting in a warble tone. Each device is powered and activated by the telephone line ring voltage, which may vary from 40 Vrms to 150 Vrms at frequencies from 15.3 Hz to 68 Hz.



Caution. These devices have limited built-in ESD protection. The leads should be shorted together or the device placed in conductive foam during storage or handling to prevent electrostatic damage to the MOS gates.

[‡] BIDFET – Bipolar, double-diffused, N-channel and P-channel MOS transistors on the same chip – patented process.

PRODUCTION DATA information is current as of publication date. Products conform to specifications per the terms of Texas Instruments standard warranty. Production processing does not necessarily include testing of all parameters.

**TEXAS
INSTRUMENTS**

POST OFFICE BOX 655303 • DALLAS, TEXAS 75265
POST OFFICE BOX 1443 • HOUSTON, TEXAS 77251-1443

Copyright © 1987, Texas Instruments Incorporated

TCM1501B, TCM1506B, TCM1512B TCM1531, TCM1532, TCM1536, TCM1539 TELEPHONE TONE-RINGER DRIVER

SCTS020 – MARCH 1986 – REVISED APRIL 1987

description (continued)

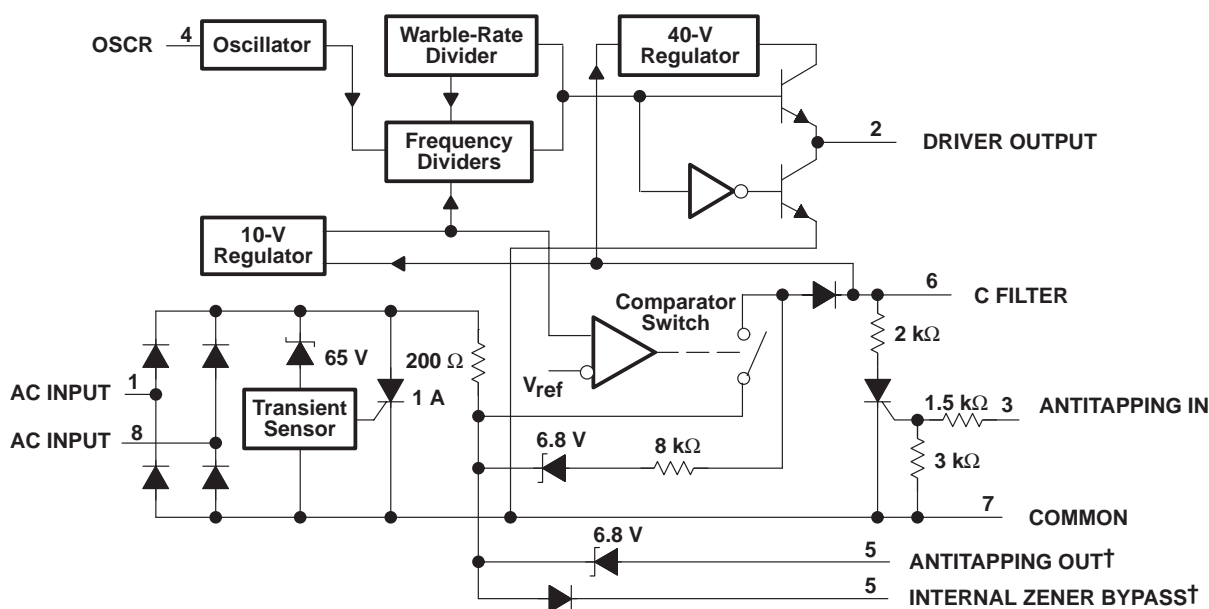
During low-voltage (off-hook) standby, typical input impedance is greater than 1 M Ω ; this prevents interference with telephone DTMF or voice signals without the use of expensive mechanical switches. This high standby impedance is achieved with an on-chip series zener diode that is activated by a differential input voltage of typically 8.9 V at AC INPUT (pins 1 and 8). A voltage level of typically 17 V differential at AC INPUT deactivates the internal zener diode, allowing for more efficient power transfer to the load when the device is in the operating mode. During ringing, the impedance of the applied circuit (see Figures 4, 5, and 6) varies from 30 k Ω to 8 k Ω over the Class B ring signal and is reasonably independent of the output load.

These devices feature lightning and transient protection circuitry designed to withstand transients of 1.5 kV for up to 200 ms duration when used with the proper external circuitry (see Figures 4 and 5). In addition, an on-chip thyristor coupled with an external resistor and capacitor circuit reject dial pulses from parallel telephones so that false ringing (tapping) does not occur (see application information section).

The TCM1501B, TCM1506B, TCM1521B have a provision for bypassing the internal series diode with one of lower voltage, thereby lowering the turn-on threshold of the devices. If the antitapping thyristor is used with these devices, an external zener diode must be added in series with ANTITAPPING OUT/INTERNAL ZENER BYPASS.

These telephone tone-ringer drivers may be used in nontelephone communications applications. For example, the devices can be used with a few external components to produce an inexpensive and highly efficient alarm (see Figure 6).

functional block diagram



† Antitapping output for TCM1531, TCM1532, TCM1536, and TCM1539. Internal zener bypass for B-suffix versions

absolute maximum ratings over free-air temperature range (unless otherwise noted)†

Continuous peak-to-peak input voltage, AC INPUT (pin 1 to pin 8) (see Note 1)	110 V
Continuous dc input voltage at C FILTER	55 V
Negative dc voltage, any pin	–1.2 V
Continuous output current, I_O , at DRIVER OUTPUT	12 mA
Continuous output current, ANTITAPPING OUT/INTERNAL ZENER BYPASS and C FILTER	30 mA
Continuous SCR on-state input current, AC INPUT	200 mA
SCR on-state input current, AC INPUT (pin 1 to pin 8) (duration $\leq 200 \mu\text{s}$)	900 mA
Continuous total dissipation at (or below) 25°C free-air temperature (see Note 2)	1000 mW
Operating free-air temperature range, T_A	–40°C to 85°C
Storage temperature range	–40°C to 125°C

† Stresses beyond those listed under “absolute maximum ratings” may cause permanent damage to the device. These are stress ratings only, and functional operation of the device at these or any other conditions beyond those indicated under “recommended operating conditions” is not implied. Exposure to absolute-maximum-rated conditions for extended periods may affect device reliability.

- NOTES: 1. For applications requiring $\geq 38 \text{ Vrms}$, an external resistor and capacitor are required to prevent damage to the device (see Note 3).
Tip and ring can be connected interchangeably to either pin 1 or pin 8.
2. For operation above 25°C free-air temperature, derate linearly at the rate of 8 mW/°C.

recommended operating conditions

	MIN	MAX	UNIT
RMS input voltage, V_I ($f = 15.3 \text{ Hz to } 68 \text{ Hz}$) (see Note 3)	40	150	V
Resistor between OSCR and COMMON, R_{osc}	120	180	k Ω
Operating free-air temperature, T_A	–20	70	°C

NOTE 3: Input voltage is applied to AC INPUT through a series 2.2-k $\Omega \pm 10\%$ resistor and a 0.47- $\mu\text{F} \pm 10\%$ capacitor (see Figures 4, 5, and 6).

**TCM1501B, TCM1506B, TCM1512B
TCM1531, TCM1532, TCM1536, TCM1539
TELEPHONE TONE-RINGER DRIVER**

SCTS020 – MARCH 1986 – REVISED APRIL 1987

electrical characteristics at 25°C free-air temperature, R_L = open, $C_{(fltr)} = 10\ \mu\text{F}$, $f = 20\ \text{Hz}$ (unless otherwise noted) (see Figure 2)

detector section

PARAMETER	TEST CONDITIONS	MIN	TYP	MAX	UNIT
Ringing start threshold voltage	ANTITAPPING OUT/INTERNAL ZENER BYPASS open, $R_L = 4\ \text{k}\Omega$		19	28	V
Ringing start threshold rms voltage	ANTITAPPING OUT/INTERNAL ZENER BYPASS open, $R_L = 4\ \text{k}\Omega$, $f = 15.3\ \text{Hz}$			40	V
Ringing stop threshold voltage	ANTITAPPING OUT/INTERNAL ZENER BYPASS open, $R_L = 4\ \text{k}\Omega$	7	11		V
Ringing start threshold voltage	Antitapping thyristor activated		40		V
ANTITAPPING IN voltage required to activate antitapping thyristor			1		V
ANTITAPPING IN input current required to activate antitapping thyristor			0.2		mA
Standby input impedance	$V_I = 3\ \text{V}$, $f \leq 20\ \text{kHz}$	0.1	1		M Ω
	$V_I = 3\ \text{V}$, $f \leq 20\ \text{kHz}$, See Note 5		10		k Ω
Impedance when ringing	$V_I = 40\ \text{V}$, $R_L = 4\ \text{k}\Omega$, $f = 15.3\ \text{Hz}$		25		k Ω
	$V_I = 130\ \text{V}$, $R_L = 4\ \text{k}\Omega$		22		
Operating current	DRIVER OUTPUT open, $V_I = 40\ \text{V}$			1.3	mA
Low-level input current	$V_I = 5\ \text{V}$			20	μA
SCR trigger voltage (AC INPUT)	All pins open, $I_I \leq 125\ \text{mA}$ (see Note 4)	50	60	100	V
SCR trigger current (AC INPUT)	All pins open, $I_I \leq 100\ \text{V}$ (see Note 4)	55	80	110	mA
SCR input hold current	See Note 4		10		mA

NOTES: 4. These parameters are measured using pulse techniques ($t_w \leq 200\ \mu\text{s}$, duty cycle $\leq 5\%$).

5. ANTITAPPING OUT/INTERNAL ZENER BYPASS connected to C FILTER, and C FILTER connected to COMMON through a 100- Ω resistor.

electrical characteristics at 25°C free-air temperature, $C_{(fltr)} = 10\ \mu\text{F}$, $f = 20\ \text{Hz}$ (unless otherwise noted) (see Figure 2)

output section

PARAMETER	TEST CONDITIONS	MIN	TYP	MAX	UNIT
Output voltage, DRIVER OUTPUT	$V_I = 17\ \text{V}$, $I_O = 2\ \text{mA}$, See Note 6		10		V
	$V_I = 50\ \text{V}$, $I_O = 5\ \text{mA}$, See Note 6		44		
	$V_I = 40\ \text{V}$, $I_O = 2\ \text{mA}$, $f = 16\ \text{Hz}$		8		
	$V_I = 150\ \text{V}$, $I_O = 2\ \text{mA}$, $f = 15.3\ \text{Hz}$		40		
Output voltage, C FILTER (see Note 7)	$V_I = 150\ \text{V}$, $f = 15.3\ \text{to}\ 68\ \text{Hz}$			55	V
High-level output current	$V_I = 50\ \text{V}$, $V_{OH} = 43\ \text{V}$		-15		mA
Low-power output current	$V_I = 50\ \text{V}$, $V_{OL} = 1.5\ \text{V}$, See Note 6		11		mA

NOTES: 6. Devices must be forced to the required output state by taking OSC R to 8 V and toggling to 0 V as required. This stops the on-chip oscillator.

7. Normal device operation requires that a capacitor be connected from C FILTER to COMMON. A 10- μF capacitor is recommended for optimum antitapping vs turn-off-time performance of the circuit. Increasing or decreasing the value of this capacitor will respectively increase or decrease the antitapping capabilities of the circuit.



TCM1501B, TCM1506B, TCM1512B
TCM1531, TCM1532, TCM1536, TCM1539
TELEPHONE TONE-RINGER DRIVERS

SCTS020 – MARCH 1986 – REVISED APRIL 1987

oscillator section

PARAMETER	TEST CONDITIONS	MIN	TYP	MAX	UNIT
Output tone frequency High tone frequency Low tone frequency	$R_{osc} = 150 \text{ k}\Omega \pm 1\%$	TCM1501B, TCM1531	1983/1736	2133/1876	2283/1998
		TCM1512B, TCM1532	1239/1085	1333/1167	1427/1249
		TCM1506B, TCM1536	516/414	555.5/445.5	595/477
		TCM1539	2066/1653	2222/1776	2378/1903
Warble frequency	$R_{osc} = 150 \text{ k}\Omega \pm 1\%$	TCM1501B, TCM1531	7.8		
		TCM1512B, TCM1532	9.8		
		TCM1506B, TCM1536	7.8		
		TCM1539	31.2		
Temperature coefficient of frequency	$T_A = -20^\circ\text{C to } 70^\circ\text{C}$		± 0.05		$\%/^\circ\text{C}$

PARAMETER MEASUREMENT INFORMATION

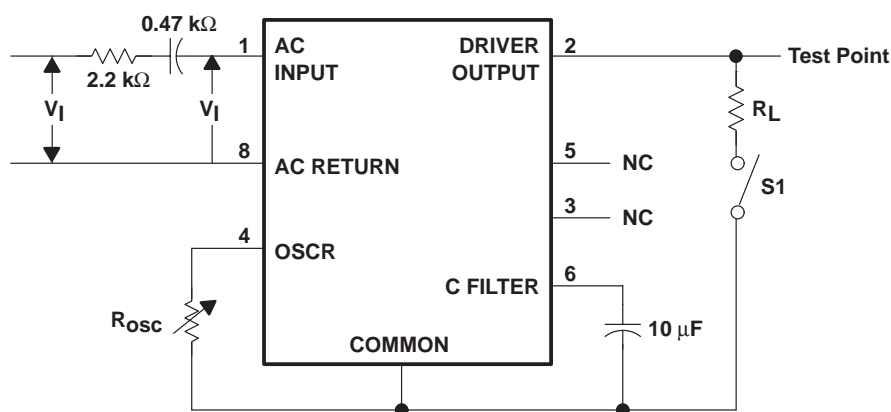
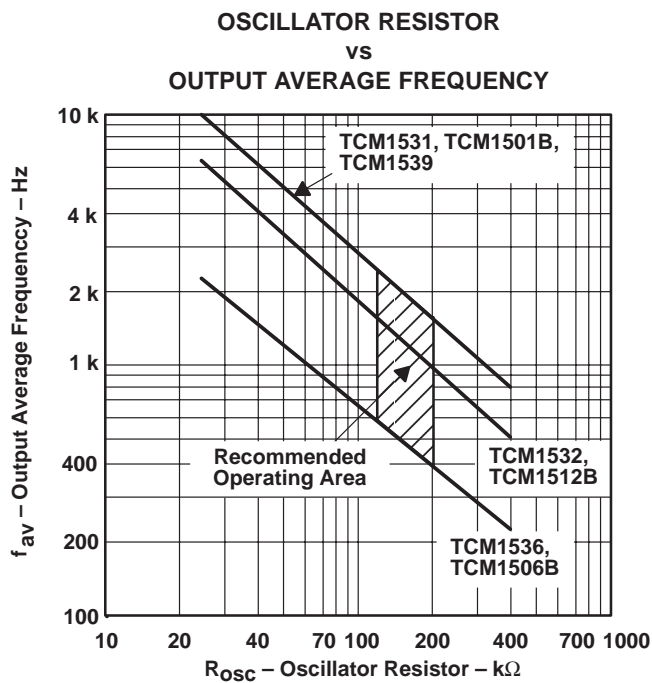


Figure 1. Test Circuit

TCM1501B, TCM1506B, TCM1512B
TCM1531, TCM1532, TCM1536, TCM1539
TELEPHONE TONE-RINGER DRIVER

SCTS020 – MARCH 1986 – REVISED APRIL 1987

TYPICAL CHARACTERISTICS



APPLICATION INFORMATION

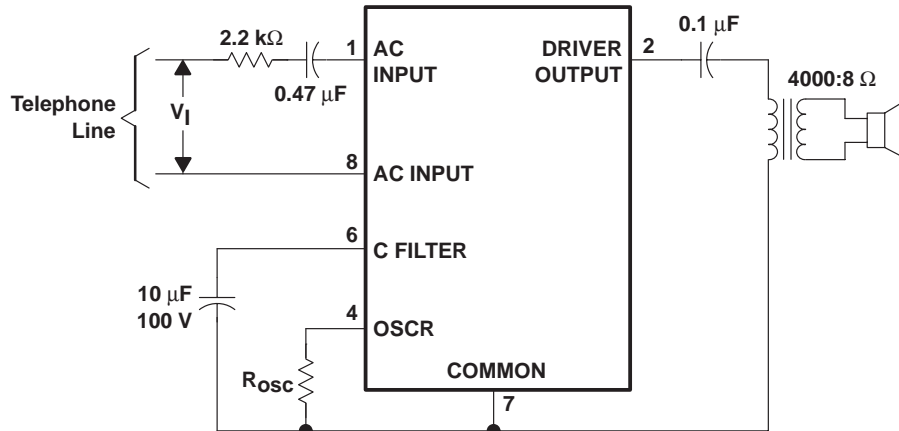


Figure 3. Telephone Application – Speaker Drive



POST OFFICE BOX 655303 • DALLAS, TEXAS 75265
POST OFFICE BOX 1443 • HOUSTON, TEXAS 77251-1443

APPLICATION INFORMATION

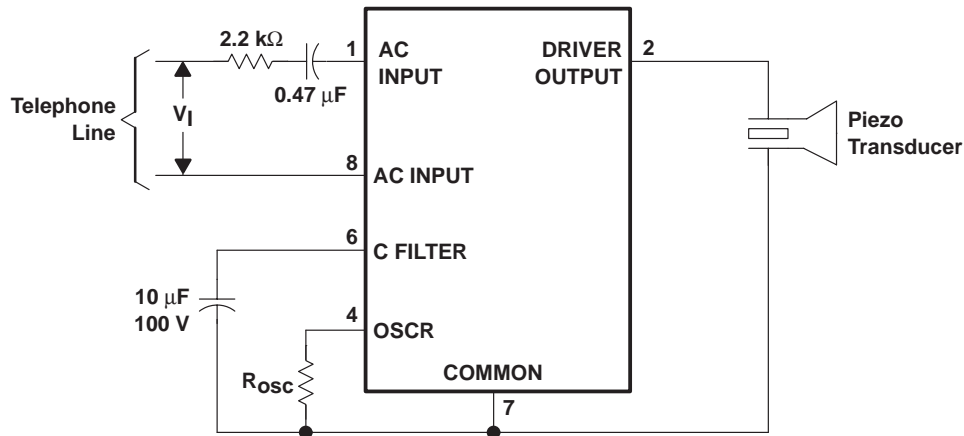
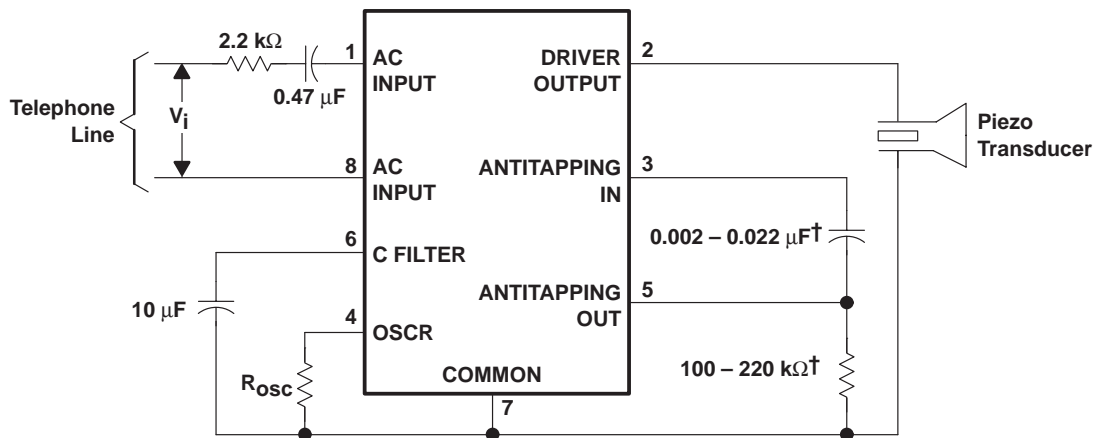


Figure 4. Telephone Application – Piezo Drive



[†] Optimum values to be determined by specific antitapping requirements.

Figure 5. Telephone Application, Improved Antitapping Circuit

TCM1501B, TCM1506B, TCM1512B
TCM1531, TCM1532, TCM1536, TCM1539
TELEPHONE TONE-RINGER DRIVER

SCTS020 – MARCH 1986 – REVISED APRIL 1987

APPLICATION INFORMATION

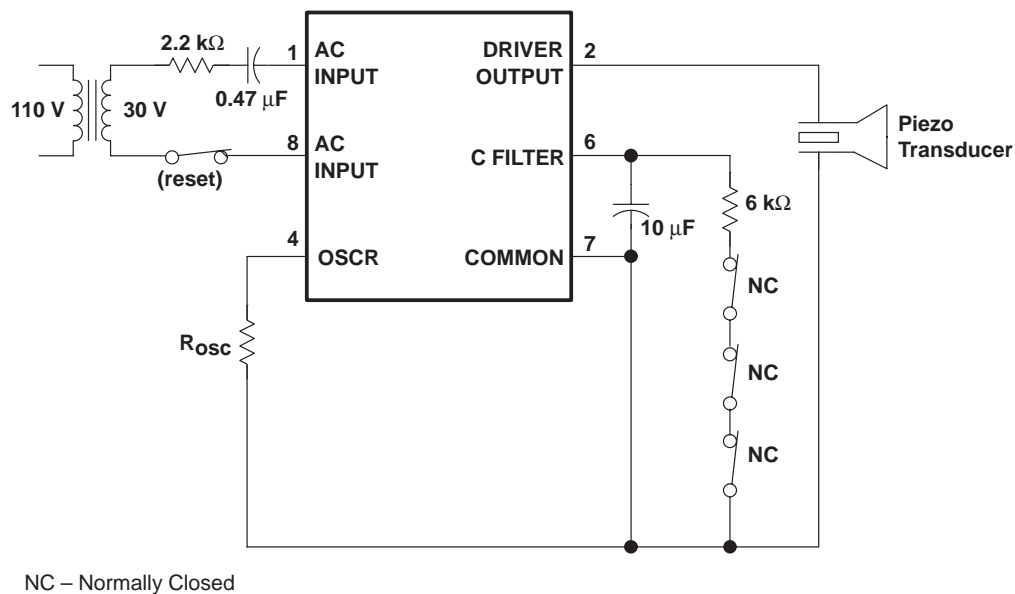


Figure 6. Alarm-System Configuration

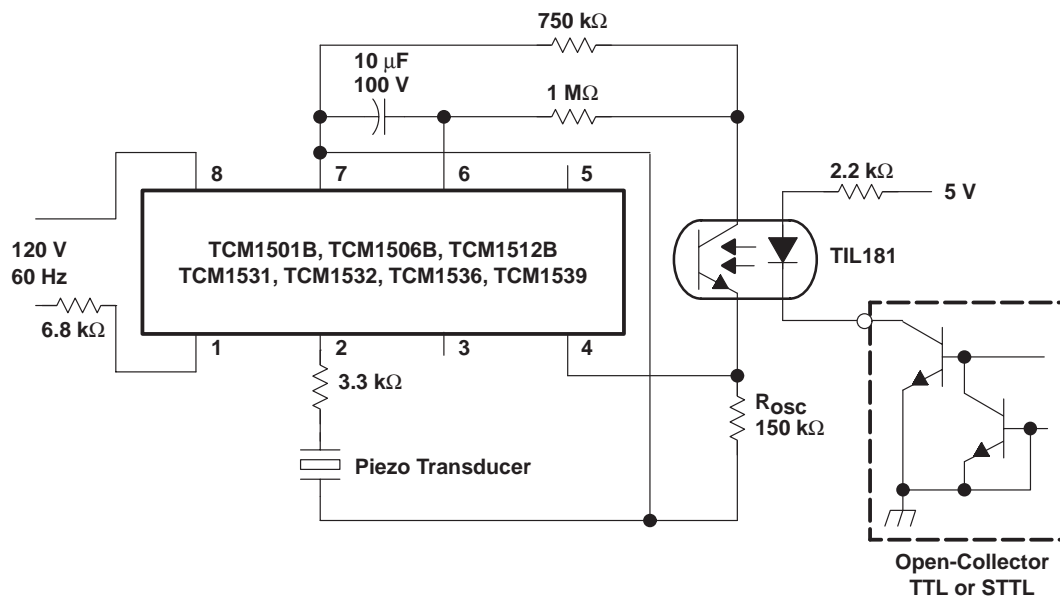


Figure 7. Nontelephone Application

APPLICATION INFORMATION

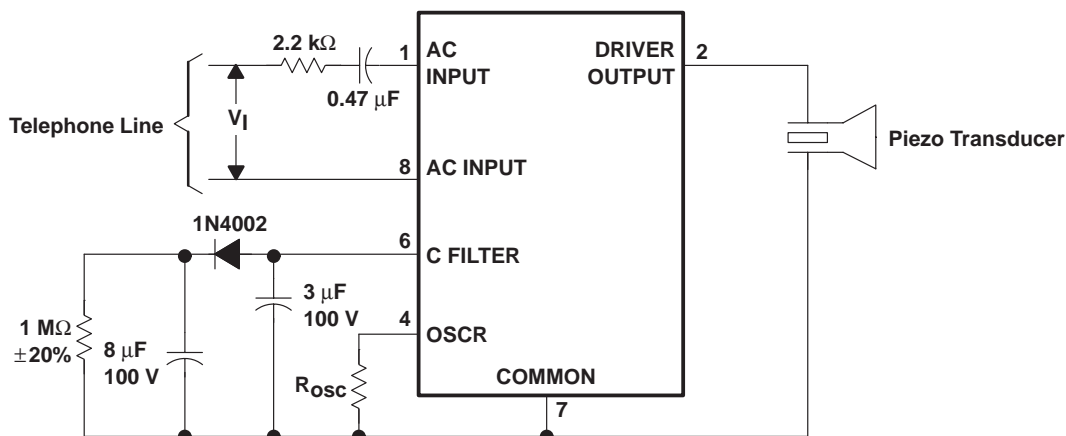


Figure 8. Telephone Application – Piezo-Drive Fast-Ring Signal Cutoff



TEXAS
INSTRUMENTS

POST OFFICE BOX 655303 • DALLAS, TEXAS 75265
 POST OFFICE BOX 1443 • HOUSTON, TEXAS 77251-1443

IMPORTANT NOTICE

Texas Instruments and its subsidiaries (TI) reserve the right to make changes to their products or to discontinue any product or service without notice, and advise customers to obtain the latest version of relevant information to verify, before placing orders, that information being relied on is current and complete. All products are sold subject to the terms and conditions of sale supplied at the time of order acknowledgement, including those pertaining to warranty, patent infringement, and limitation of liability.

TI warrants performance of its semiconductor products to the specifications applicable at the time of sale in accordance with TI's standard warranty. Testing and other quality control techniques are utilized to the extent TI deems necessary to support this warranty. Specific testing of all parameters of each device is not necessarily performed, except those mandated by government requirements.

CERTAIN APPLICATIONS USING SEMICONDUCTOR PRODUCTS MAY INVOLVE POTENTIAL RISKS OF DEATH, PERSONAL INJURY, OR SEVERE PROPERTY OR ENVIRONMENTAL DAMAGE ("CRITICAL APPLICATIONS"). TI SEMICONDUCTOR PRODUCTS ARE NOT DESIGNED, AUTHORIZED, OR WARRANTED TO BE SUITABLE FOR USE IN LIFE-SUPPORT DEVICES OR SYSTEMS OR OTHER CRITICAL APPLICATIONS. INCLUSION OF TI PRODUCTS IN SUCH APPLICATIONS IS UNDERSTOOD TO BE FULLY AT THE CUSTOMER'S RISK.

In order to minimize risks associated with the customer's applications, adequate design and operating safeguards must be provided by the customer to minimize inherent or procedural hazards.

TI assumes no liability for applications assistance or customer product design. TI does not warrant or represent that any license, either express or implied, is granted under any patent right, copyright, mask work right, or other intellectual property right of TI covering or relating to any combination, machine, or process in which such semiconductor products or services might be or are used. TI's publication of information regarding any third party's products or services does not constitute TI's approval, warranty or endorsement thereof.