

CMOS 4-BIT MICROCONTROLLER

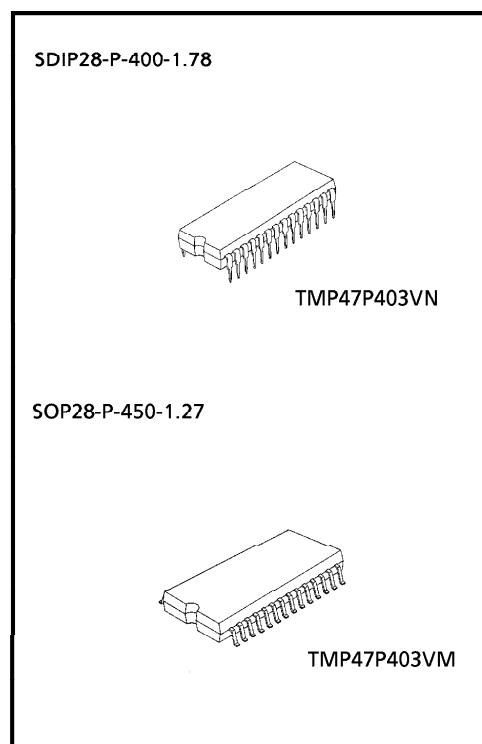
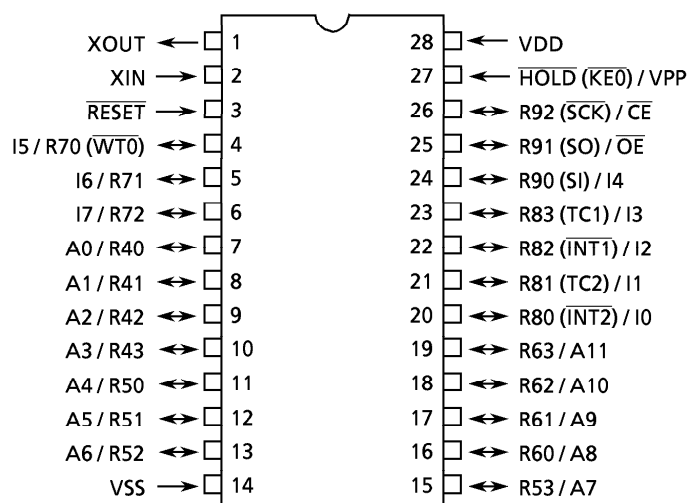
TMP47P403VN
TMP47P403VM

The 47P403V is the system evaluation LSI of 47C103/203 with 32K bits one-time PROM. The 47P403V programs / verifies using an adapter socket to connect with PROM programmer, as it is in TMM27256AD. In addition, the 47P403V and the 47C103/203 are pin compatible. The 47P403V operates as the same as the 47C103/203 by programming to the internal PROM.

PART No.	ROM	RAM	PACKAGE	ADAPTOR SOCKET
TMP47P403VN	OTP		SDIP28-P-400-1.78	BM1140
TMP47P403VM	4096 × 8-bit	128 × 4-bit	SOP28-P-450-1.27	BM1141

PIN ASSIGNMENT (TOP VIEW)

SDIP28-P-400-1.78 / SOP28-P-450-1.27



PIN FUNCTION

The 47P403V has MCU mode and PROM mode.

(1) MCU mode

The 47C103/203 and the 47P403V are pin compatible.

(2) PROM mode

PIN NAME	INPUT / OUTPUT	FUNCTIONS	PIN NAME(MCU mode)
A11 to A8	INPUT	Address inputs	R63 to R60
A7 to A4			R53 to R50
A3 to A0			R43 to R40
I7 to I5	I/O	Data inputs / outputs	R72 to R70
I4			R90
I3 to I0			R83 to R80
\overline{CE}	Input	Chip Enable input	R92
\overline{OE}		Output Enable input	R91
VPP	Power supply	+ 12.5 V / 5 V (Program supply voltage)	\overline{HOLD}
VCC		+ 5 V	VDD
VSS		0 V	VSS
RESET	Input	PROM mode setting pin. Be fixed to low level.	
XIN	Input	Input the clock from the external oscillator.	
XOUT	Input	Be pulled up to VCC level. (750 Ω typ.)	

OPERATIONAL DESCRIPTION

The following is an explanation of hardware configuration and operation in relation to the 47P403V. The 47P403V is the same as the 47C103/203 except that an OTP is used instead of a built-in mask ROM.

1. OPERATION mode

The 47P403V has an MCU mode and a PROM mode.

1.1 MCU mode

The MCU mode is set by attaching a resonator between the XIN and Xout pins. Operation in the MCU mode is the same as for the 47C103/203. In the 47P403V, RC oscillation is impossible.

1.1.1 Program Memory

The program storage area are as shown in Figure 1-1. Data conversion tables must be set in two locations when using the 47P403V to check 47C103/203 operation.

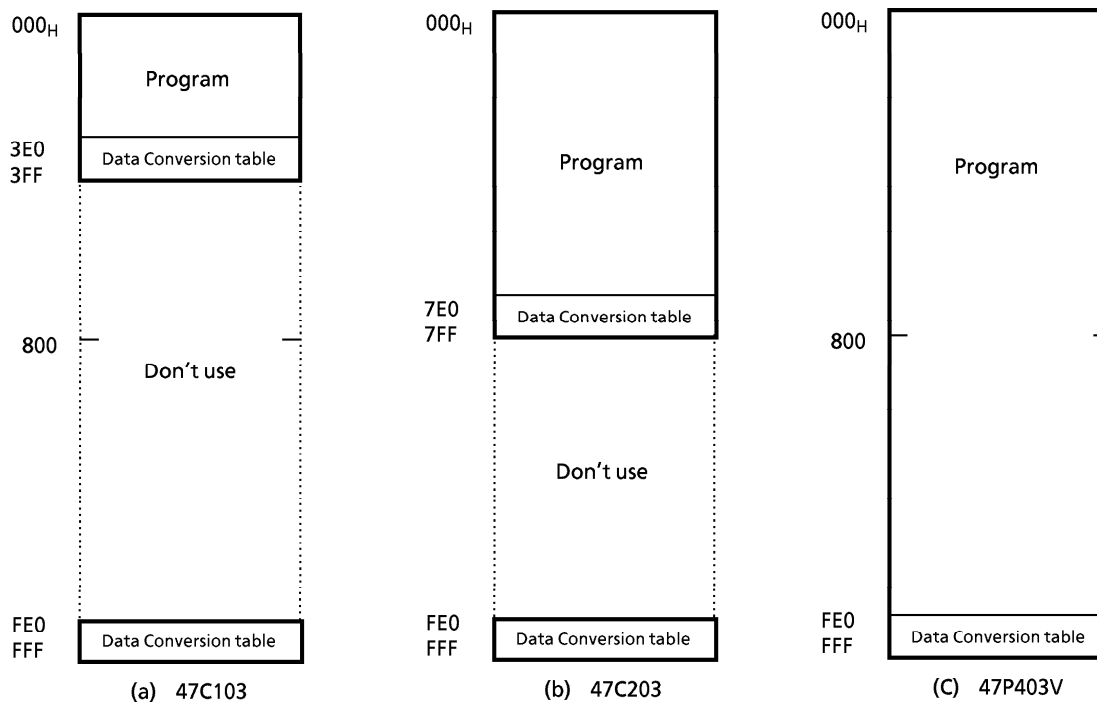


Figure 1-1. Program area

1.1.2 Data Memory

The 47P403V has 128 × 4-bit of data memory (RAM). When the 47P403V is used as the 47C103 evaluator, programming should be performed assuming that the RAM is assigned to addresses 00_H to 0F_H and 50_H to 7F_H as shown in Figure 1-2 (a).

At the Real time emulator (BM47C203), RAM is assigned to addresses 00_H to FF_H. However, programming should be performed assuming that the RAM is assigned as shown in Figure 1-2 (a).

Further, zero-page (addresses 00_H to 0F_H) and special function shared area (Stack location 0-3) are overlapped on the 47C103.

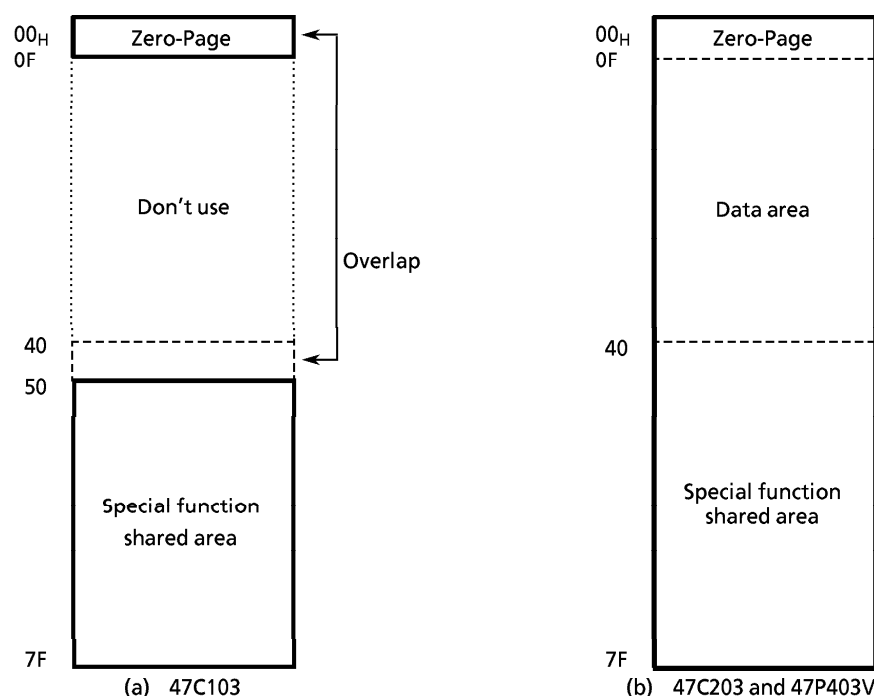


Figure 1-2.

1.1.3 Input / Output Circuitry

(1) Control pins

This is the same as for the 47C103/203. In the 47P403V, RC oscillation is impossible. Connecting the resonator or inputting the external clock to XIN pin are required when using as evaluator of I/O code FD, FE.

(2) I/O Ports

The input / output circuit of the 47P403V is the same as I/O code FA, FD of the 47C103/203.

External resistance, for example, is required when using as evaluator of other I/O codes (FB, FE).

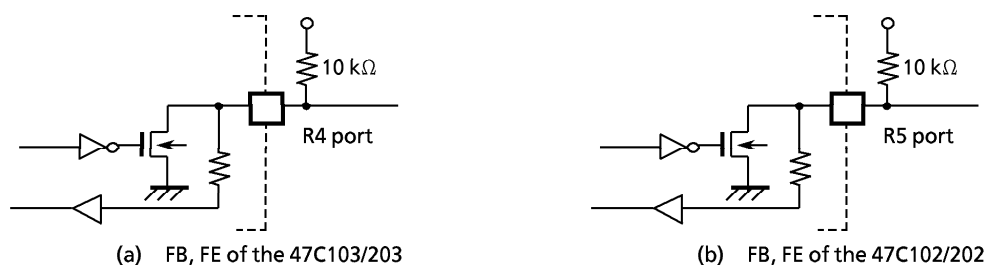


Figure 1-3. I/O code and external circuitry

1.2 PROM mode

The PROM mode is set by inputting the external clock to the XIN pin when XOUT pin is pulled up to the VCC level. In PROM mode, programs can be written or verified using a general-purpose PROM writer with an adapter socket being attached.

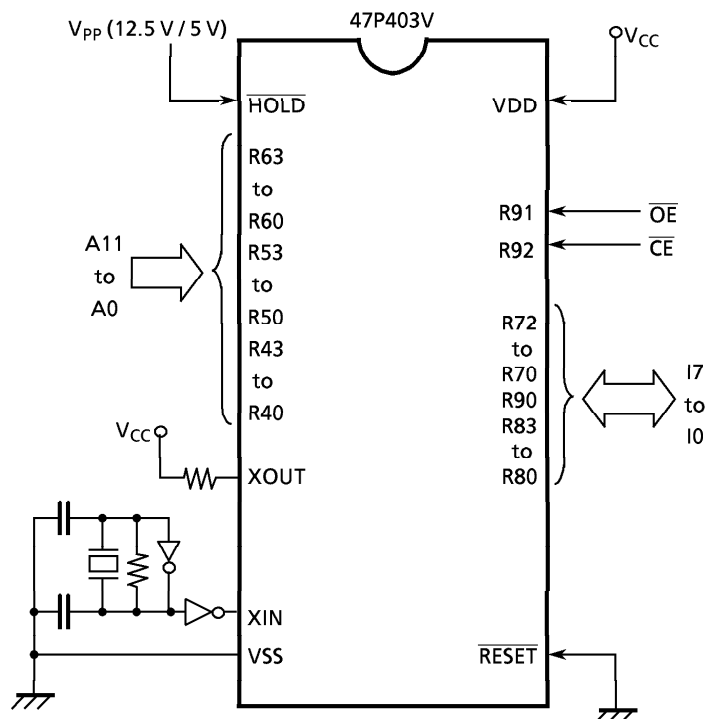


Figure 1-4. Setting for PROM mode

1.2.1 Program Writing

When writing a program, set a ROM type to "27256A" (programming voltage : 12.5V) . Since the 47P403V has a 4096×8 -bit internal PROM (000 to FFF_H) , set a stop address of a PROM writer to "FFF_H" . For a general-purpose PROM writer, use the writer which does not have or can release an electric signature mode.

1.2.2 High Speed Programming Mode

The program time can be greatly decreased by using this high speed programming mode. The device is set up in the high speed programming mode when the programming voltage (+ 12.5 V) is applied to the V_{PP} terminal with $V_{CC} = 6\text{ V}$ and $\overline{CE} = V_{IH}$.

The programming is achieved by applying a single low level 1ms pulse the \overline{CE} input after addresses and data are stable. Then the programmed data is verified by using Program Verify Mode.

If the programmed data is not correct, another program pulse of 1ms is applied and then programmed data is verified. This should be repeated until the program operates correctly (max. 25 times).

After correctly programming the selected address, one additional program pulse with pulse width 3 times that needed for programming is applied.

When programming has been completed, the data in all addresses should be verified with $V_{CC} = V_{PP} = 5\text{ V}$.

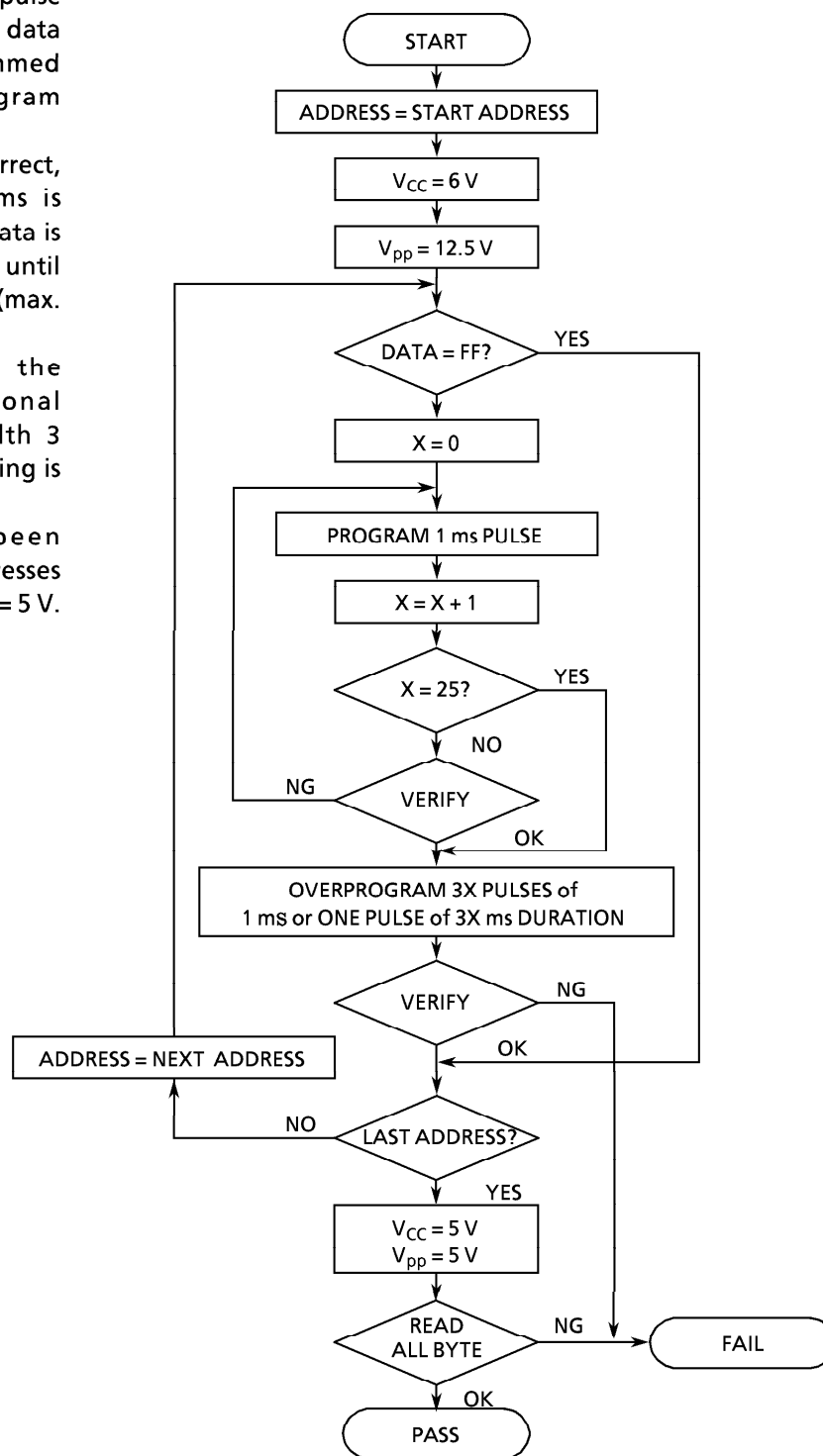


Figure 1-5. FLOW CHART

ELECTRICAL CHARACTERISTICS

ABSOLUTE MAXIMUM RATINGS

(V_{SS} = 0 V)

PARAMETER	SYMBOL	PINS	RATING	UNIT
Supply Voltage	V _{DD}		– 0.3 to 6.5	V
Program Voltage	V _{PP}	HOLD / VPP pin	– 0.3 to 13.0	V
Input Voltage	V _{IN}		– 0.3 to V _{DD} + 0.3	V
Output Voltage	V _{OUT}		– 0.3 to V _{DD} + 0.3	V
Output Current (Per 1 pin)	I _{OUT1}	Port R5, R6	30	mA
	I _{OUT2}	Port R4	15	
	I _{OUT3}	Ports R7, R8, R9	3.2	
Output Current (Total)	ΣI _{OUT1}	Port R4, R5, R6	120	mA
Power Dissipation [T _{opr} = 70 °C]	PD	DIP	300	mW
		SOP	180	
Soldering Temperature (time)	T _{sld}		260 (10 s)	°C
Storage Temperature	T _{stg}		– 55 to 125	°C
Operating Temperature	T _{opr}		– 30 to 70	°C

RECOMMENDED OPERATING CONDITIONS

(V_{SS} = 0 V, T_{opr} = – 30 to 70 °C)

PARAMETER	SYMBOL	PINS	CONDITIONS	Min.	Max.	UNIT
Supply Voltage	V _{DD}		f _c = 6.0 MHz	4.5	5.5	V
			f _c = 4.2 MHz	2.7		
			HOLD mode	2.0		
Input High Voltage	V _{IH1}	Except Hysteresis Input	In the normal operating area	V _{DD} × 0.7	V _{DD}	V
	V _{IH2}	Hysteresis Input		V _{DD} × 0.75		
	V _{IH3}		In the HOLD mode	V _{DD} × 0.9		
Input Low Voltage	V _{IL1}	Except Hysteresis Input	In the normal operating area	0	V _{DD} × 0.3	V
	V _{IL2}	Hysteresis Input			V _{DD} × 0.25	
	V _{IL3}		In the HOLD mode		V _{DD} × 0.1	
Clock Frequency	f _c	XIN, XOUT	V _{DD} = 4.5 to 5.5 V	0.4	6.0	MHz
			V _{DD} = 2.7 to 5.5 V		4.2	

D.C. CHARACTERISTICS

(V_{SS} = 0 V, T_{opr} = – 30 to 70 °C)

PARAMETER	SYMBOL	PINS	CONDITIONS	Min.	Typ.	Max.	UNIT
Hysteresis Voltage	V _{HS}	Hysteresis Input		–	0.7	–	V
Input Current	I _{IN1}	RESET, HOLD	V _{DD} = 5.5 V, V _{IN} = 5.5 V / 0 V	–	–	± 2	μA
	I _{IN2}	Open drain output ports					
Input Resistance	R _{IN}	RESET		100	220	450	kΩ
Input Low Current	I _{IL}	Push-pull output ports	V _{DD} = 5.5 V, V _{IN} = 0.4 V	–	–	– 2	mA
Output Leakage Current	I _{LO}	Open drain output ports	V _{DD} = 5.5 V, V _{OUT} = 5.5 V	–	–	2	μA
Output Low Voltage	V _{OL}	Port R7, R8, R9	V _{DD} = 4.5 V, I _{OL} = 1.6 mA	–	–	0.4	V
Output Low Current	I _{OL1}	Port R5, R6	V _{DD} = 4.5 V, V _{OL} = 1.0 V	–	20	–	mA
	I _{OL2}	Port R4		–	7	–	
Supply Current (in the Normal operating mode)	I _{DD}		V _{DD} = 5.5 V, f _c = 4 MHz	–	2	4	mA
			V _{DD} = 3.0 V, f _c = 4 MHz	–	1	2	
			V _{DD} = 3.0 V, f _c = 400 kHz	–	0.5	1	
Supply Current (in the HOLD operating mode)	I _{DDH}		V _{DD} = 5.5 V	–	0.5	10	μA

Note 1. Typ. values show those at T_{opr} = 25 °C, V_{DD} = 5 V.

Note 2. Input Current I_{IN1} : The current through resistor is not included.

Note 3. Supply Current : V_{IN} = 5.3 V / 0.2 V (V_{DD} = 5.5 V), 2.8 V / 0.2 V (V_{DD} = 3.0 V)

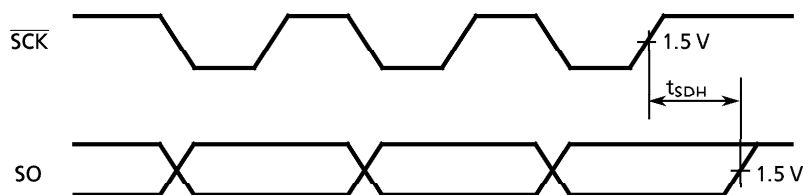
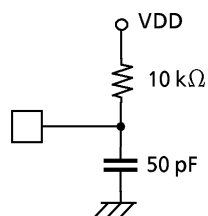
A.C. CHARACTERISTICS

 $(V_{SS} = 0\text{ V}, T_{opr} = -30\text{ to }70\text{ }^{\circ}\text{C})$

PARAMETER	SYMBOL	CONDITIONS	Min.	Typ.	Max.	UNIT
Instruction Cycle Time	t_{cy}	$V_{DD} = 4.5\text{ to }5.5\text{ V}$	1.3	–	20	μs
		$V_{DD} = 2.7\text{ to }5.5\text{ V}$	1.9			
High level Clock pulse Width	t_{WCH}	For external clock operation	80	–	–	ns
Low level Clock pulse Width	t_{WCL}					
Shift data Hold Time	t_{SDH}		$0.5 t_{cy} - 300$	–	–	ns

Note. Shift data Hold Time:External circuit for pins $\overline{\text{SCK}}$ and SO

Serial port (completed of transmission)



RECOMMENDED OSCILLATING CONDITIONS

 $(V_{SS} = 0\text{ V}, V_{DD} = 4.5\text{ to }5.5\text{ V}, T_{opr} = -30\text{ to }70\text{ }^{\circ}\text{C})$

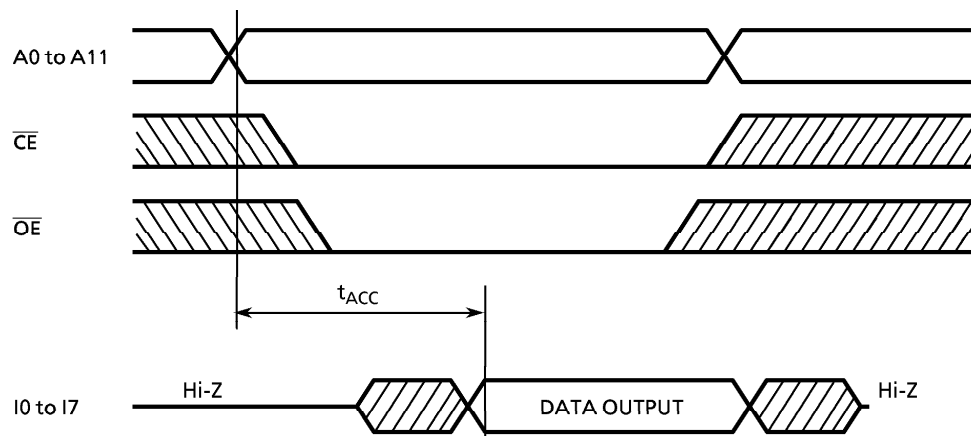
Recommended oscillating conditions of the 47P403V are equal to the 47C103/203's but RC oscillation is impossible.

DC/AC CHARACTERISTICS

 $(V_{SS} = 0\text{ V})$

(1) Read Operation

PARAMETER	SYMBOL	CONDITION	Min.	Typ.	Max.	UNIT
Output Level High Voltage	V_{IH4}		$V_{CC} \times 0.7$	–	V_{CC}	V
Output Level Low Voltage	V_{IL4}		0	–	$V_{CC} \times 0.3$	V
Supply Voltage	V_{CC}		4.75	–	6.0	V
Programming Voltage	V_{PP}					
Address Access Time	t_{ACC}	$V_{CC} = 5.0 \pm 0.25\text{ V}$	0	–	350	ns



(2) High Speed Programming Operation

PARAMETER	SYMBOL	CONDITION	Min.	Typ.	Max.	UNIT
Input High Voltage	V_{IH4}		$V_{CC} \times 0.7$	—	V_{CC}	V
Input Low Voltage	V_{IL4}		0	—	$V_{CC} \times 0.3$	V
Supply Voltage	V_{CC}		4.75	—	6.0	V
V_{PP} Power Supply Voltage	V_{PP}		12.00	12.50	13.00	V
Programming Pulse Width	t_{PW}	$V_{CC} = 6.0 \pm 0.25 \text{ V}$	0.95	1.0	1.05	ms

