

TOSHIBA CMOS Digital Integrated Circuit Silicon Monolithic

TC7MH240FK, TC7MH244FK

Octal Bus Buffer

TC7MH240FK Inverted, 3-State Outputs

TC7MH244FK Non-Inverted, 3-State Outputs

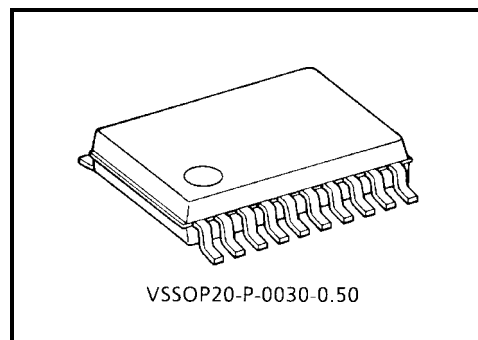
The TC7MH240FK and TC7MH244FK are advanced high speed CMOS octal bus buffers fabricated with silicon gate C²MOS technology.

They achieve the high speed operation similar to equivalent bipolar schottky TTL while maintaining the CMOS low power dissipation.

The TC7MH240FK is an inverting 3-state buffer having two active-low output enables. The TC7MH244FK is a non-inverting 3-state buffer, and has two active-low output enables.

These devices are designed to be used with 3-state memory address drivers, etc.

An input protection circuit ensures that 0 to 7 V can be applied to the input pins without regard to the supply voltage. This device can be used to interface 5 V to 3 V systems and two supply systems such as battery back up. This circuit prevents device destruction due to mismatched supply and input voltages.

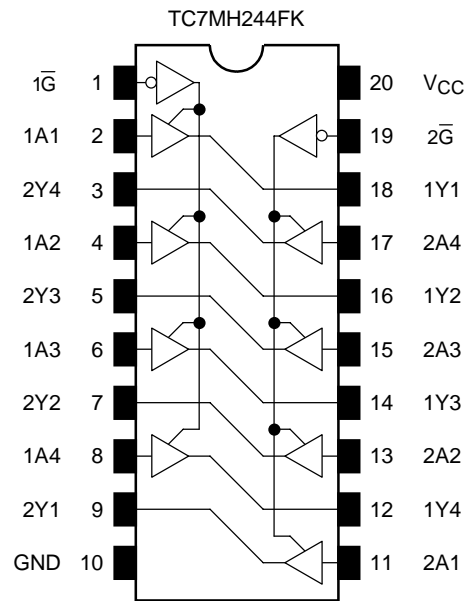
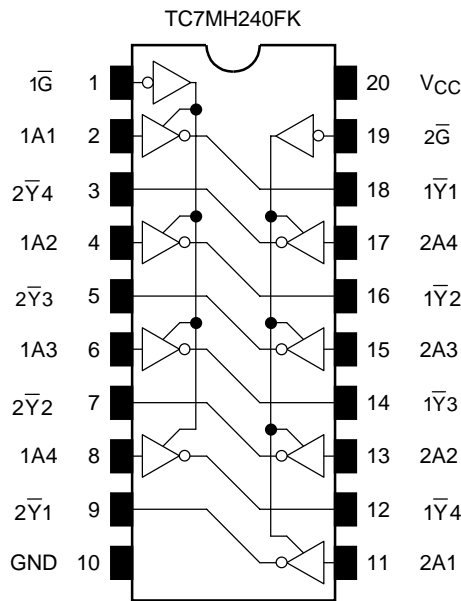


Weight: 0.03 g (typ.)

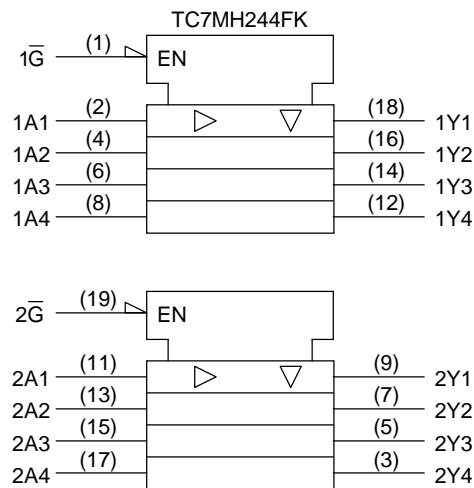
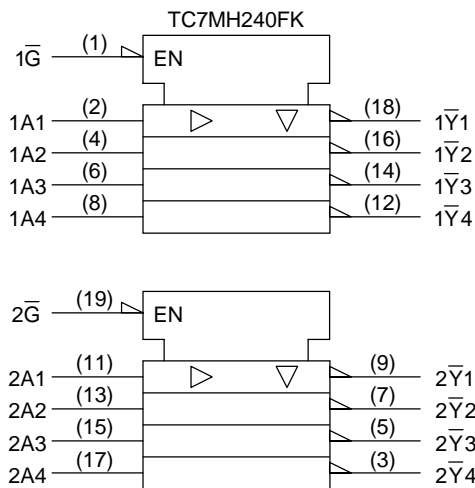
Features

- High speed: $t_{pd} = 3.9 \text{ ns (typ.)}$ ($V_{CC} = 5 \text{ V}$)
- Low power dissipation: $I_{CC} = 4 \text{ } \mu\text{A (max)}$ ($T_a = 25^\circ\text{C}$)
- High noise immunity: $V_{NIH} = V_{NIL} = 28\% V_{CC} \text{ (min)}$
- Power down protection is provided on all inputs.
- Balanced propagation delays: $t_{pLH} \approx t_{pHL}$
- Wide operating voltage range: $V_{CC \text{ (opr)}} = 2 \sim 5.5 \text{ V}$
- Low noise: $V_{OLP} = 0.8 \text{ (max)}$
- Pin and function compatible with 74ALS240/244

Pin Assignment (top view)



IEC Logic Symbol



Truth Table

Inputs		Outputs	
G	A _n	Y _n	Y _n
L	L	L	H
L	H	H	L
H	X	Z	Z

X : Don't care
Z : High impedance
Y_n : TC7MH244FK
Y_n : TC7MH240FK

Maximum Ratings

Characteristics	Symbol	Rating	Unit
Supply voltage range	V_{CC}	-0.5~7.0	V
DC input voltage	V_{IN}	-0.5~7.0	V
DC output voltage	V_{OUT}	-0.5~ $V_{CC} + 0.5$	V
Input diode current	I_{IK}	-20	mA
Output diode current	I_{OK}	±20	mA
DC output current	I_{OUT}	±25	mA
DC V_{CC} /ground current	I_{CC}	±75	mA
Power dissipation	P_D	180	mW
Storage temperature	T_{stg}	-65~150	°C

Recommended Operating Conditions

Characteristics	Symbol	Rating	Unit
Supply voltage	V_{CC}	2.0~5.5	V
Input voltage	V_{IN}	0~5.5	V
Output voltage	V_{OUT}	0~ V_{CC}	V
Operating temperature	T_{opr}	-40~85	°C
Input rise and fall time	dt/dv	0~100 ($V_{CC} = 3.3 \pm 0.3$ V)	ns/V
		0~20 ($V_{CC} = 5 \pm 0.5$ V)	

Electrical Characteristics
DC Characteristics

Characteristics		Symbol	Test Condition		Ta = 25°C				Ta = -40~85°C		Unit					
					VCC (V)	Min	Typ.	Max	Min	Max						
Input voltage	High level	VIH	—		2.0	1.50	—	—	1.50	—	V					
					3.0~5.5	VCC × 0.7	—	—	VCC × 0.7	—						
	Low level	VIL	—		2.0	—	—	0.50	—	0.50						
					3.0~5.5	—	—	VCC × 0.3	—	VCC × 0.3						
Output voltage	High level	VOH	VIN = VIH or VIL	IOH = -50 μA	2.0	1.9	2.0	—	1.9	—	V					
					3.0	2.9	3.0	—	2.9	—						
					4.5	4.4	4.5	—	4.4	—						
				IOH = -4 mA	3.0	2.58	—	—	2.48	—						
				IOH = -8 mA	4.5	3.94	—	—	3.80	—						
	Low level	VOL	VIN = VIH or VIL	IOL = 50 μA	2.0	—	0	0.1	—	0.1						
					3.0	—	0	0.1	—	0.1						
					4.5	—	0	0.1	—	0.1						
				IOL = 4 mA	3.0	—	—	0.36	—	0.44						
				IOL = 8 mA	4.5	—	—	0.36	—	0.44						
				3-state output off-state current		IOZ	VIN = VIH or VIL VOUT = VCC or GND		5.5	—		—	±0.25	—	±2.50	μA
				Input leakage current		IIN	VIN = 5.5 V or GND		0~5.5	—		—	±0.1	—	±1.0	μA
Quiescent supply current		ICC	VIN = VCC or GND		5.5	—	—	4.0	—	40.0	μA					

AC Characteristics (Input: $t_r = t_f = 3 \text{ ns}$)

Characteristics	Symbol	Test Condition			Ta = 25°C			Ta = -40~85°C		Unit
			V _{CC} (V)	C _L (pF)	Min	Typ.	Max	Min	Max	
Propagation delay time (TC7MH240FK)	t_{pLH} t_{pHL}	—	3.3 ± 0.3	15	—	5.3	7.5	1.0	9.0	ns
				50	—	7.8	11.0	1.0	12.5	
			5.0 ± 0.5	15	—	3.6	5.5	1.0	6.5	
				50	—	5.1	7.5	1.0	8.5	
Propagation delay time (TC7MH244FK)	t_{pLH} t_{pHL}	—	3.3 ± 0.3	15	—	5.8	8.4	1.0	10.0	ns
				50	—	8.3	11.9	1.0	13.5	
			5.0 ± 0.5	15	—	3.9	5.5	1.0	6.5	
				50	—	5.4	7.5	1.0	8.5	
3-state output enable time	t_{pZL} t_{pZH}	$R_L = 1 \text{ k}\Omega$	3.3 ± 0.3	15	—	6.6	10.6	1.0	12.5	ns
				50	—	9.1	14.1	1.0	16.0	
			5.0 ± 0.5	15	—	4.7	7.3	1.0	8.5	
				50	—	6.2	9.3	1.0	10.5	
3-state output disable time	t_{pLZ} t_{pHZ}	$R_L = 1 \text{ k}\Omega$	3.3 ± 0.3	50	—	10.3	14.0	1.0	16.0	ns
			5.0 ± 0.5	50	—	6.7	9.2	1.0	10.5	
Output to output skew	t_{osLH} t_{osHL}	(Note1)	3.3 ± 0.3	50	—	—	1.5	—	1.5	ns
			5.0 ± 0.5	50	—	—	1.0	—	1.0	
Input capacitance	C _{IN}	—	—	—	—	4	10	—	10	pF
Output capacitance	C _{OUT}	—	—	—	—	6	—	—	—	pF
Power dissipation capacitance (Note2)	C _{PD}	TC7MH240FK	—	—	—	17	—	—	—	pF
		TC7MH244FK	—	—	—	19	—	—	—	

Note1: Parameter guaranteed by design.

$$t_{osLH} = |t_{pLHm} - t_{pLHn}|, \quad t_{osHL} = |t_{pHLm} - t_{pHLn}|$$

Note2: C_{PD} is defined as the value of the internal equivalent capacitance which is calculated from the operating current consumption without load.

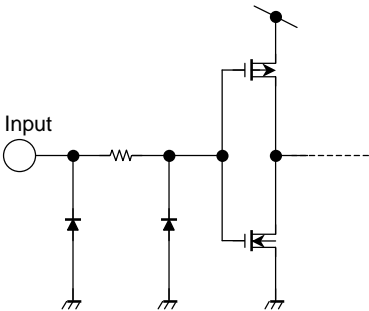
Average operating current can be obtained by the equation:

$$I_{CC(opr)} = C_{PD} \cdot V_{CC} \cdot f_{IN} + I_{CC}/8 \text{ (per bit)}$$

Noise Characteristics (Input: $t_r = t_f = 3\text{ ns}$)

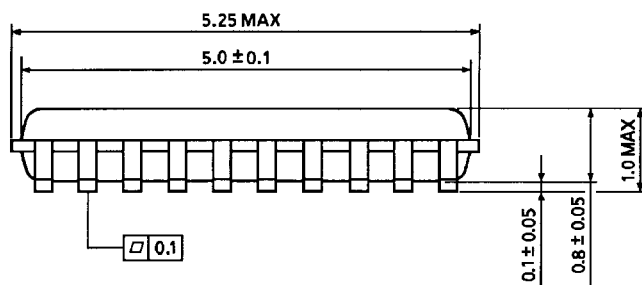
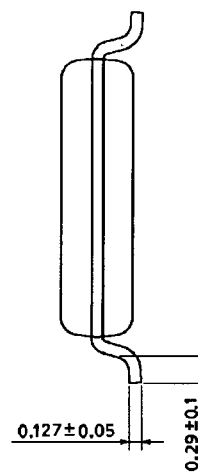
Characteristics	Symbol	Test Condition	Ta = 25°C			Unit
			VCC (V)	Typ.	Limit	
Quiet output maximum dynamic VOL	VOLP	CL = 50 pF	5.0	0.5	0.8	V
Quiet output minimum dymnamic VOL	VOLV	CL = 50 pF	5.0	-0.5	-0.8	V
Minimum high level dynamic input voltage VIH	VIHD	CL = 50 pF	5.0	—	3.5	V
Maximum low level dynamic input voltage VIL	VILD	CL = 50 pF	5.0	—	1.5	V

Input Equivalent Circuit



VSSOP20-P-0030-0.50

Mechanical drawing of a rectangular component with dimensions and pin labels. The component has a width of 3.0 ± 0.1 and a height of 4.0 ± 0.2 . Pin labels include No.20, No.11, No.1, No.10, and No.11. Dimensions include 0.25 TYP. , 0.5 , 0.2 , $+0.05$, -0.04 , and 0.1 (M).



Weight: 0.03 g (typ.)

RESTRICTIONS ON PRODUCT USE

000707EBA

- TOSHIBA is continually working to improve the quality and reliability of its products. Nevertheless, semiconductor devices in general can malfunction or fail due to their inherent electrical sensitivity and vulnerability to physical stress. It is the responsibility of the buyer, when utilizing TOSHIBA products, to comply with the standards of safety in making a safe design for the entire system, and to avoid situations in which a malfunction or failure of such TOSHIBA products could cause loss of human life, bodily injury or damage to property.
In developing your designs, please ensure that TOSHIBA products are used within specified operating ranges as set forth in the most recent TOSHIBA products specifications. Also, please keep in mind the precautions and conditions set forth in the "Handling Guide for Semiconductor Devices," or "TOSHIBA Semiconductor Reliability Handbook" etc..
- The TOSHIBA products listed in this document are intended for usage in general electronics applications (computer, personal equipment, office equipment, measuring equipment, industrial robotics, domestic appliances, etc.). These TOSHIBA products are neither intended nor warranted for usage in equipment that requires extraordinarily high quality and/or reliability or a malfunction or failure of which may cause loss of human life or bodily injury ("Unintended Usage"). Unintended Usage include atomic energy control instruments, airplane or spaceship instruments, transportation instruments, traffic signal instruments, combustion control instruments, medical instruments, all types of safety devices, etc.. Unintended Usage of TOSHIBA products listed in this document shall be made at the customer's own risk.
- The products described in this document are subject to the foreign exchange and foreign trade laws.
- The information contained herein is presented only as a guide for the applications of our products. No responsibility is assumed by TOSHIBA CORPORATION for any infringements of intellectual property or other rights of the third parties which may result from its use. No license is granted by implication or otherwise under any intellectual property or other rights of TOSHIBA CORPORATION or others.
- The information contained herein is subject to change without notice.