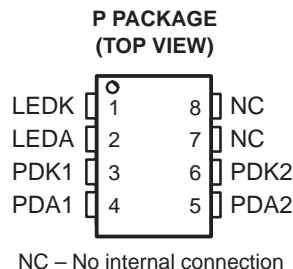


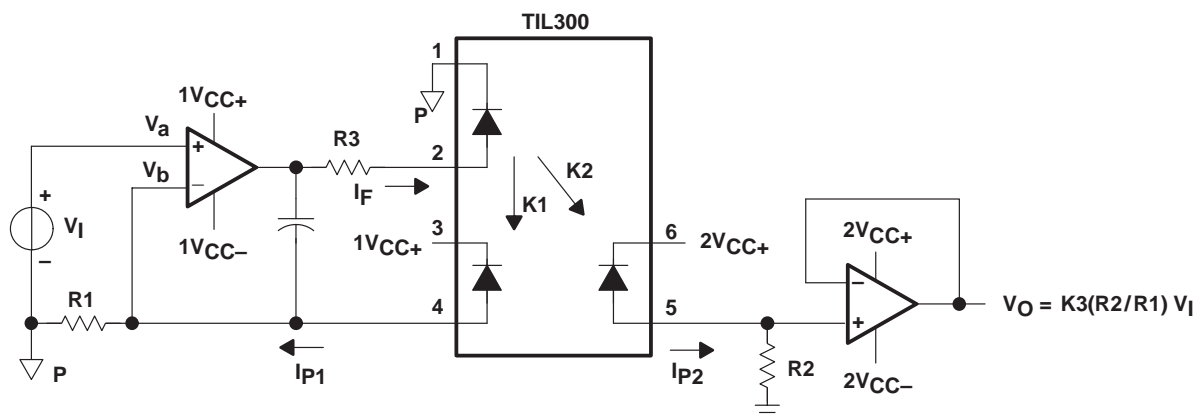
- ac or dc Signal Coupling
- Wide Bandwidth . . . >200 kHz
- High Transfer-Gain Stability . . .  $\pm 0.05\%/^{\circ}\text{C}$
- 3500 V Peak Isolation
- UL Approval Pending
- Applications
  - Power-Supply Feedback
  - Medical-Sensor Isolation
  - Opto Direct-Access Arrangement (DAA)
  - Isolated Process-Control Transducers



## description

The TIL300 precision linear optocoupler consists of an infrared LED irradiating an isolated feedback photodiode and an output photodiode in a bifurcated arrangement. The feedback photodiode captures a percentage of the flux of the LED and generates a control signal that can be used to regulate the LED drive current. This technique is used to compensate for the nonlinear time and temperature characteristics of the LED. The output-side photodiode produces an output signal that is linearly proportional to the servo-optical flux emitted from the LED.

A typical application circuit (shown in Figure 1) uses an operational amplifier as the input to drive the LED. The feedback photodiode sources current through R1, which is connected to the inverting input of the input operational amplifier. The photocurrent  $I_{P1}$  assumes a magnitude that satisfies the relationship  $I_{P1} = V_i/R1$ . The magnitude of the current is directly proportional to the LED current through the feedback transfer gain K1 ( $V_i/R1 = K1 \times I_F$ ). The operational amplifier supplies LED current to produce sufficient photocurrent to keep the node voltage  $V_b$  equal to node voltage  $V_a$ .



- NOTES: A. K1 is servo current gain, the ratio of the feedback photodiode current ( $I_{P1}$ ) to the input LED current ( $I_F$ ), i.e.  $K1 = I_{P1}/I_F$ .  
 B. K2 is forward gain, the ratio of the output photodiode current ( $I_{P2}$ ) to the input LED current ( $I_F$ ), i.e.  $K2 = I_{P2}/I_F$ .  
 C. K3 is transfer gain, the ratio of the forward gain to the servo gain, i.e.  $K3 = K2/K1$ .

**Figure 1. Typical Application Circuit**



Please be aware that an important notice concerning availability, standard warranty, and use in critical applications of Texas Instruments semiconductor products and disclaimers thereto appears at the end of this data sheet.

PRODUCTION DATA information is current as of publication date. Products conform to specifications per the terms of Texas Instruments standard warranty. Production processing does not necessarily include testing of all parameters.

**TEXAS  
INSTRUMENTS**

POST OFFICE BOX 655303 • DALLAS, TEXAS 75265

Copyright © 1996, Texas Instruments Incorporated

# TIL300, TIL300A

## PRECISION LINEAR OPTOCOUPLER

SOES019A – OCTOBER 1995 – REVISED JULY 1996

### Terminal Functions

TERMINAL NAME	NO.	I/O	DESCRIPTION
LEDK	1		LED cathode
LEDA	2		LED anode
PDK1	3		Photodiode 1 cathode
PDA1	4		Photodiode 1 anode
PDA2	5		Photodiode 2 anode
PDK2	6		Photodiode 2 cathode
NC	7		No internal connection
NC	8		No internal connection

### absolute maximum ratings over operating free-air temperature range (unless otherwise noted)<sup>†</sup>

#### Emitter

Continuous total power dissipation (see Note 1) ..... 160 mW  
 Input LED forward current,  $I_F$  ..... 60 mA  
 Surge current with pulse width < 10  $\mu$ s ..... 250 mA  
 Reverse voltage,  $V_R$  ..... 5 V  
 Reverse current,  $I_R$  ..... 10  $\mu$ A

#### Detector

Continuous power dissipation (see Note 2) ..... 50 mW  
 Reverse voltage,  $V_R$  ..... 50 V

#### Coupler

Continuous total power dissipation (see Note 3) ..... 210 mW  
 Storage temperature,  $T_{stg}$  ..... -55°C to 150°C  
 Operating temperature,  $T_A$  ..... -55°C to 100°C  
 Input-to-output voltage ..... 3535 V<sub>peak</sub>  
 Lead temperature 1,6 mm (1/16 inch) from case for 10 seconds ..... 260°C

<sup>†</sup> Stresses beyond those listed under “absolute maximum ratings” may cause permanent damage to the device. These are stress ratings only, and functional operation of the device at these or any other conditions beyond those indicated under “recommended operating conditions” is not implied. Exposure to absolute-maximum-rated conditions for extended periods may affect device reliability.

NOTES: 1. Derate linearly from 25°C at a rate of 2.66 mW/°C.  
 2. Derate linearly from 25°C at a rate of 0.66 mW/°C.  
 3. Derate linearly from 25°C at a rate of 3.33 mW/°C.



POST OFFICE BOX 655303 • DALLAS, TEXAS 75265

**electrical characteristics at  $T_A = 25^\circ\text{C}$**

**Emitter**

PARAMETER		CONDITIONS	MIN	TYP†	MAX	UNIT
$V_F$	Forward voltage	$I_F = 10\text{ mA}$		1.25	1.50	V
	Temperature coefficient of $V_F$			-2.2		mV/°C
$I_R$	Reverse current	$V_R = 5\text{ V}$			10	$\mu\text{A}$
$t_r$	Rise time	$I_F = 10\text{ mA}$ , $\Delta I_F = 2\text{ mA}$		1		$\mu\text{s}$
$t_f$	Fall time	$I_F = 10\text{ mA}$ , $\Delta I_F = 2\text{ mA}$		1		$\mu\text{s}$
$C_j$	Junction capacitance	$V_F = 0$ , $f = 1\text{ MHz}$		15		pF

**Detector**

PARAMETER		CONDITIONS	MIN	TYP†	MAX	UNIT
$I_{DK}^\dagger$	Dark current	$V_R = 15\text{ V}$ , $I_F = 0$			25	nA
	Open circuit voltage	$I_F = 10\text{ mA}$		0.5		V
$I_{OS}$	Short circuit current limit	$I_F = 10\text{ mA}$		80		$\mu\text{A}$
$C_j$	Junction capacitance	$V_F = 0$ , $f = 1\text{ MHz}$		12		pF

**Coupler**

PARAMETER			CONDITIONS		MIN	TYP†	MAX	UNIT
K1‡	Servo current gain		Detector bias voltage = −15 V	I <sub>F</sub> = 1 mA	0.3%	0.7%	1.5%	
K2§	Forward current gain			I <sub>F</sub> = 10 mA	0.5%	1.25%	2%	
				I <sub>F</sub> = 1 mA	0.3%	0.7%	1.5%	
K3¶	Transfer gain	TIL300		I <sub>F</sub> = 10 mA	0.5%	1.25%	2%	
				I <sub>F</sub> = 1 mA	0.75	1	1.25	
		TIL300A		I <sub>F</sub> = 10 mA	0.75	1	1.25	
				I <sub>F</sub> = 1 mA	0.9	1	1.10	
	Gain temperature coefficient			I <sub>F</sub> = 10 mA				
ΔK3#	Transfer gain linearity		I <sub>F</sub> = 1 to 10 mA	−0.5			% / °C	
			I <sub>F</sub> = 1 to 10 mA, T <sub>A</sub> = 0 to 75 °C	±0.005				
BW	Bandwidth		I <sub>F</sub> = 10 mA, I <sub>F</sub> (MODULATION) = ±2 mA	R <sub>L</sub> = 1 kΩ,	200			kHz
t <sub>r</sub>	Rise time		I <sub>F</sub> = 10 mA, I <sub>F</sub> (MODULATION) = ±2 mA	R <sub>L</sub> = 1 kΩ,	1.75			μs
t <sub>f</sub>	Fall time		I <sub>F</sub> = 10 mA, I <sub>F</sub> (MODULATION) = ±2 mA	R <sub>L</sub> = 1 kΩ,	1.75			μs
V <sub>iso</sub> †	Peak Isolation voltage		I <sub>IO</sub> = 10 μA, time = 1 minute	f = 60 Hz	3535			V

† This symbol is not currently listed within EIA or JEDEC standards for semiconductor symbology.

‡ Servo current gain ( $K1$ ) is the ratio of the feedback photodiode current ( $I_{P1}$ ) to the input LED current ( $I_F$ ), i.e.  $K1 = I_{P1}/I_F$ .

§ Forward gain ( $K2$ ) is the ratio of the output photodiode current ( $I_{P2}$ ) to the input LED current ( $I_F$ ), i.e.  $K2 = I_{P2}/I_F$ .

¶ Transfer gain ( $K3$ ) is the ratio of the forward gain to the servo gain, i.e.  $K3 = K2/K1$ .

# Transfer gain linearity ( $\Delta K3$ ) is the percent deviation of the transfer gain  $K3$  as a function of LED input current ( $I_F$ ) or the package temperature.

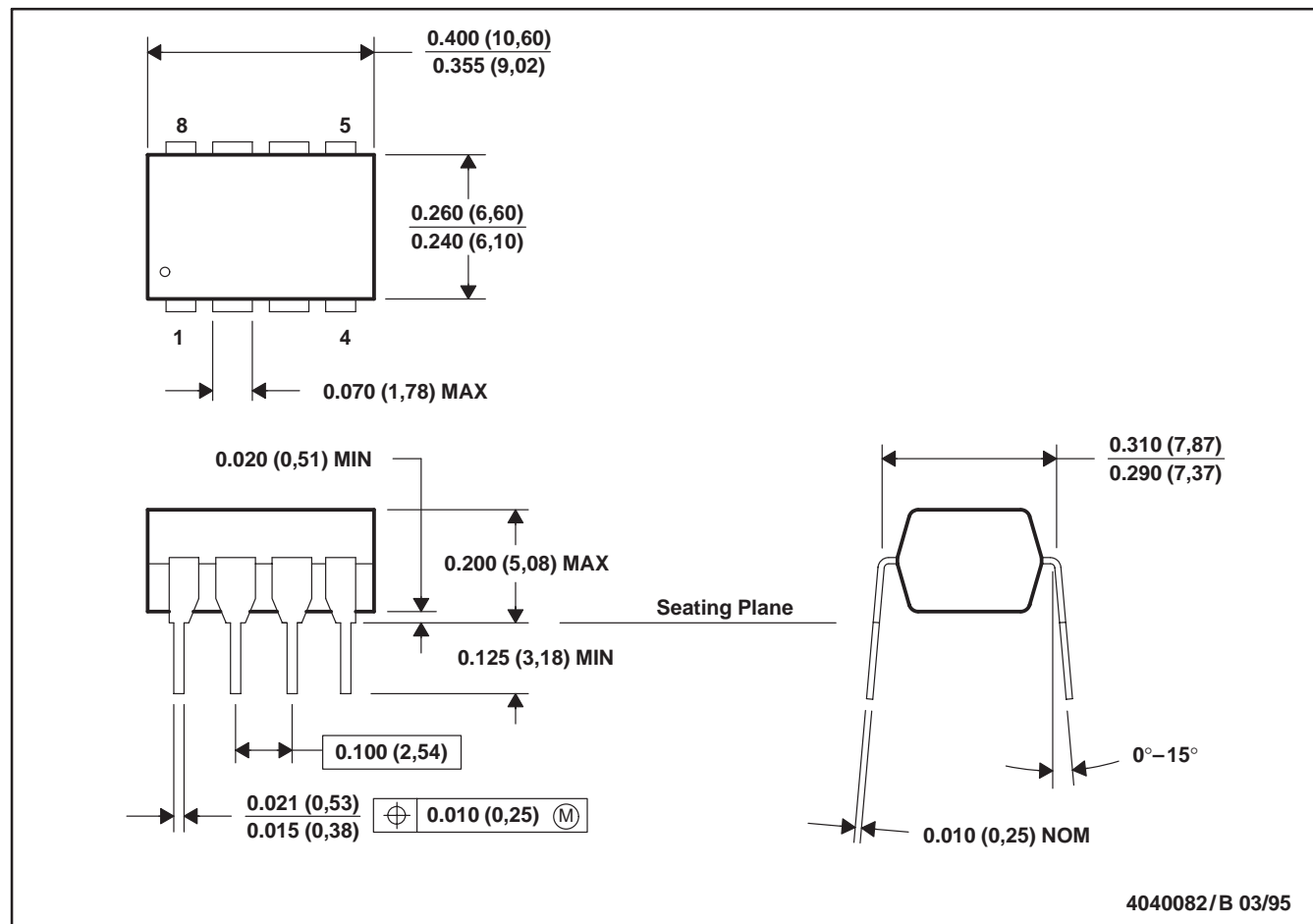
# TIL300, TIL300A PRECISION LINEAR OPTOCOUPLER

SOES019A – OCTOBER 1995 – REVISED JULY 1996

## MECHANICAL DATA

P (R-PDIP-T8)

PLASTIC DUAL-IN-LINE PACKAGE



NOTES: A. All linear dimensions are in inches (millimeters).  
B. This drawing is subject to change without notice.  
C. Falls within JEDEC MS-001

## **IMPORTANT NOTICE**

Texas Instruments and its subsidiaries (TI) reserve the right to make changes to their products or to discontinue any product or service without notice, and advise customers to obtain the latest version of relevant information to verify, before placing orders, that information being relied on is current and complete. All products are sold subject to the terms and conditions of sale supplied at the time of order acknowledgement, including those pertaining to warranty, patent infringement, and limitation of liability.

TI warrants performance of its semiconductor products to the specifications applicable at the time of sale in accordance with TI's standard warranty. Testing and other quality control techniques are utilized to the extent TI deems necessary to support this warranty. Specific testing of all parameters of each device is not necessarily performed, except those mandated by government requirements.

CERTAIN APPLICATIONS USING SEMICONDUCTOR PRODUCTS MAY INVOLVE POTENTIAL RISKS OF DEATH, PERSONAL INJURY, OR SEVERE PROPERTY OR ENVIRONMENTAL DAMAGE ("CRITICAL APPLICATIONS"). TI SEMICONDUCTOR PRODUCTS ARE NOT DESIGNED, AUTHORIZED, OR WARRANTED TO BE SUITABLE FOR USE IN LIFE-SUPPORT DEVICES OR SYSTEMS OR OTHER CRITICAL APPLICATIONS. INCLUSION OF TI PRODUCTS IN SUCH APPLICATIONS IS UNDERSTOOD TO BE FULLY AT THE CUSTOMER'S RISK.

In order to minimize risks associated with the customer's applications, adequate design and operating safeguards must be provided by the customer to minimize inherent or procedural hazards.

TI assumes no liability for applications assistance or customer product design. TI does not warrant or represent that any license, either express or implied, is granted under any patent right, copyright, mask work right, or other intellectual property right of TI covering or relating to any combination, machine, or process in which such semiconductor products or services might be or are used. TI's publication of information regarding any third party's products or services does not constitute TI's approval, warranty or endorsement thereof.