

## Voltage Controlled Temperature Compensation Crystal Oscillator

TO503

- Excellent frequency stability
- Wide operating temperature range
- Clipped sine output, +5.0 VDC supply
- Tight specifications and an internal trimmer
- Internal or external voltage control available

### Specifications:

**Frequency Range:** 6.000000 MHz ~ 25.000000 MHz

**Operating Temperature:**

0°C ~ +50°C	- A
-10°C ~ +60°C	- B
-20°C ~ +70°C	- C
-30°C ~ +75°C	- D

**Storage Temperature:** -40°C ~ +85°C

**Stability Vs. Temperature:**

± 5.0 ppm
± 2.5 ppm
± 1.0 ppm

**Vs. Input Voltage:** ± 0.5 ppm ± 5%

**Aging:** ± 1.0 ppm max first year

**Output Level:** 1.0 Vp-p min

**Output Waveform:** Clipped Sine

**Output Load:** 10 KΩ, 10 pF

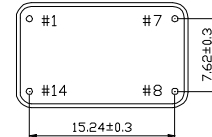
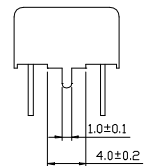
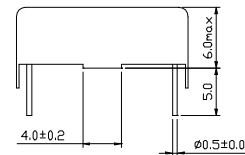
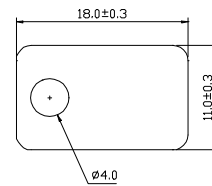
**Frequency Adjustment:** ± 3.0 ppm min with internal trimmer

**Voltage Control (external):** ± 5 ppm ~ ± 15 ppm  
(2.5 ± 1V) or (1.5 ± 1V)

**Supply Voltage:** 5.0 VDC (± 5%)

**Supply Current:** 3.0 mA max

### TO-A



Pin	Configurations
1	VC or NG
7	Ground
8	Output
14	Supply

All dimensions are in mm

### Note:

1. Other frequencies, stabilities, and operating temperature ranges available. Consult VTC Support for specific requirements.
2. Not all combinations of the above, stabilities, and temperature ranges are available. Consult VTC Support if your requirement is not standard.
3. All specifications subject to change without notice.

### Ordering Information

Product name + Frequency + Operating Temperature + Stability + Other Specification Code.

i.e. TO503-10.8M-C-2.5