

# CERAFIL® (Filters/Traps/Discriminators) for Audio/Visual Equipment



## CERAFIL® 3.5-6.5MHz for Chroma Signal SFSRA/L Series

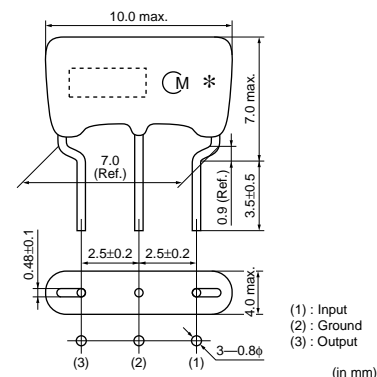
Chroma signals frequency conversion process is involved in VCRs video signal processing circuit. These SFSRA/SFSRH/SFSRL series are suitable for B.P.F.

### ■ Features

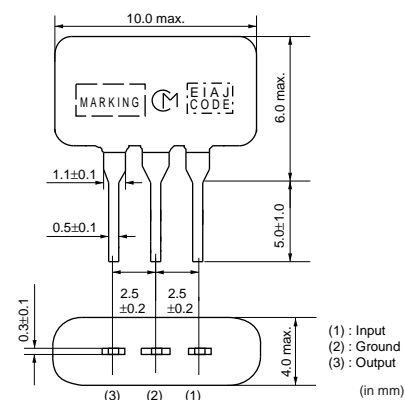
1. Frequency adjustment free.
2. Responsible for VHS. 8mm VCR system.



SFSRA Series



SFSRL Series

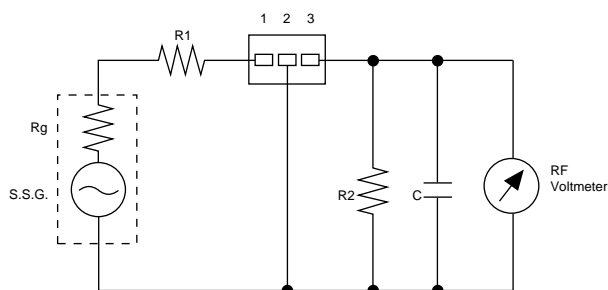


Part Number	Nominal Center Frequency (fn) (MHz)	3dB Bandwidth (kHz)	20dB Bandwidth (kHz)	Insertion Loss (dB)	Spurious Attenuation(1) (dB)	Spurious Attenuation(2) (dB)	Input/Output Impedance (ohm)
<b>SFSRA4M43CF00-B0</b>	4.430	fn±60 min.	600 max.	6.0 max.	30 min. [within 0 to fn]	20 min. [within fn to 7.0MHz]	1000
<b>SFSRL4M32DF00-B0</b>	4.320	fn±70 min.	750 max.	6.0 max.	30 min. [within 0 to fn]	15 min. [within fn to 5.5MHz]	1000
<b>SFSRL5M17DF00-B0</b>	5.170	fn±70 min.	750 max.	7.5 max.	30 min. [within 0 to fn]	15 min. [within fn to 7.0MHz]	600

Insertion Loss: at minimum loss point

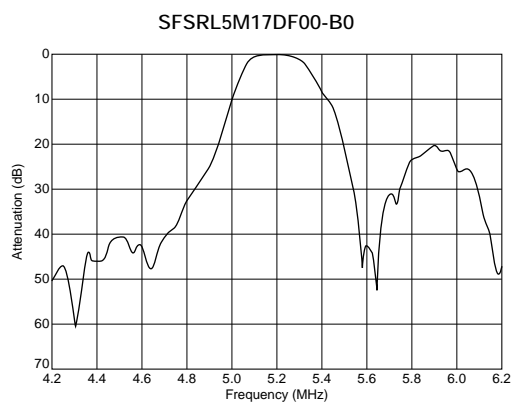
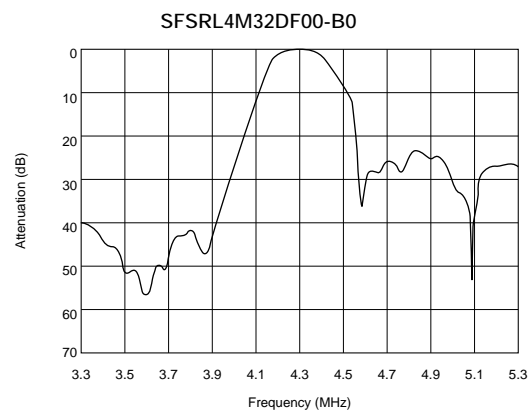
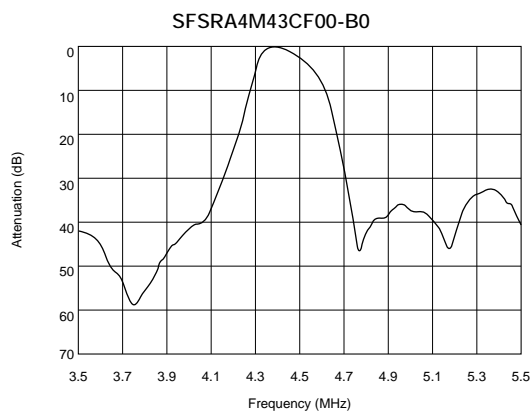
The order quantity should be an integral multiple of the "Minimum Quantity" shown in the package page.

### ■ Test Circuit



Rg+R1=R2=Input and Output Impedance  
C=10pF (Including stray capacitance and input capacitance of RF voltmeter)

## ■ Frequency Characteristics



## ■ Frequency Characteristics (Spurious)

