

# CERAFIL® (Filters/Traps/Discriminators) for Audio/Visual Equipment

**muRata**

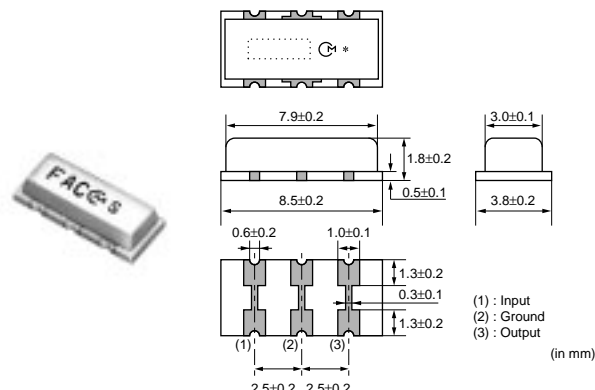
## CERAFIL® 4.5-6.5MHz Chip Type SFSKA Series

SMD ceramic filter SFSKA\_CF is a small and thin SMD filter sealed with a metal cap.

Recommended for LCD-TVs, and small and thin tuners.

### ■ Features

1. High attenuation outside bandwidth
2. Small and thin package
3. Reflow-solderable

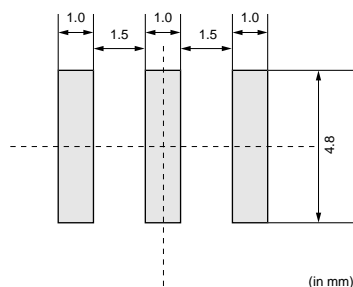


Part Number	Nominal Center Frequency (fn) (MHz)	3dB Bandwidth (kHz)	20dB Bandwidth (kHz)	Insertion Loss (dB)	Spurious Attenuation(1) (dB)	Spurious Attenuation(2) (dB)	Input/Output Impedance (ohm)
<b>SFSKA4M50CF00-R1</b>	4.500	fn±60 min.	600 max.	6.0 max.	20 min. [within 0 to fn]	15 min. [within fn to 7.0MHz]	1000

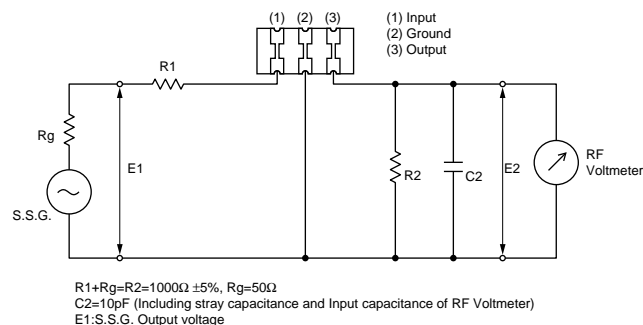
Insertion Loss: at minimum loss point

The order quantity should be an integral multiple of the "Minimum Quantity" shown in the package page.

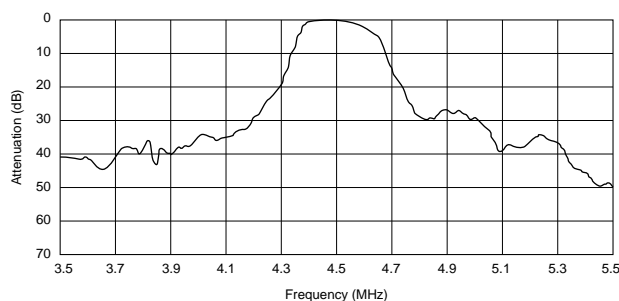
### ■ Standard Land Pattern Dimensions



### ■ Test Circuit



### ■ Frequency Characteristics



### ■ Frequency Characteristics (Spurious)

