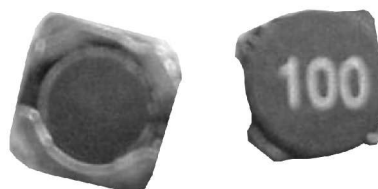


## SDBS Series

## SDBS 0402 Type

## FEATURES

- ⊙ Low profile.
- ⊙ Magnetically shielded.
- ⊙ Available on tape and reel for auto-insertion.
- ⊙ Ideal for a variety of DC-DC converter
- ⊙ Inductor applications.



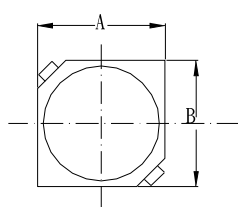
## ELECTRICAL CHARACTERISTICS

- ⊙ Tested at 100KHz.
- ⊙ Inductance drop = 30% typ. At rated IDC
- ⊙ Operating temperature range -25°C ~ +85°C

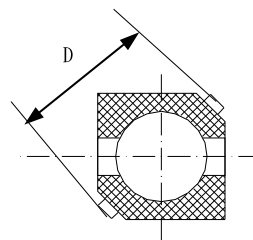
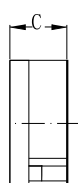
## STANDARD ELECTRICAL SPECIFICATION

Part number	Inductance [ $\mu$ H]	Inductance Tolerance	DC Resistance [m $\Omega$ ] (max.)	I.D.C [mA] (max.)
1R5	1.5	30%	43	1550
2R2	2.2		50	1200
3R3	3.3		63	1100
4R7	4.7		80	900
6R8	6.8		95	730
100	10		160	550
150	15		230	420
220	22		350	350
330	33		470	320

## CONSTRUCTION



TOP VIEW



BOTTOM VIEW

## DIMENSIONS : mm

A	B	C	D
3.8 $\pm$ 0.2	3.8 $\pm$ 0.2	2.0 max.	5.6 max