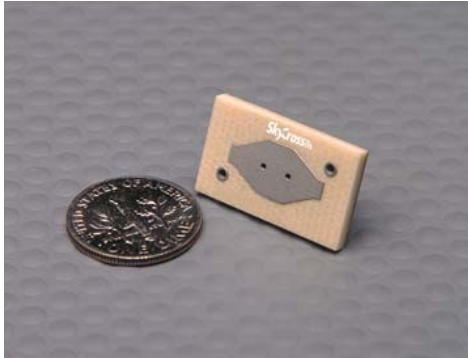


5.25 GHz Loop Antenna for High Data Rate WLAN Applications



Features

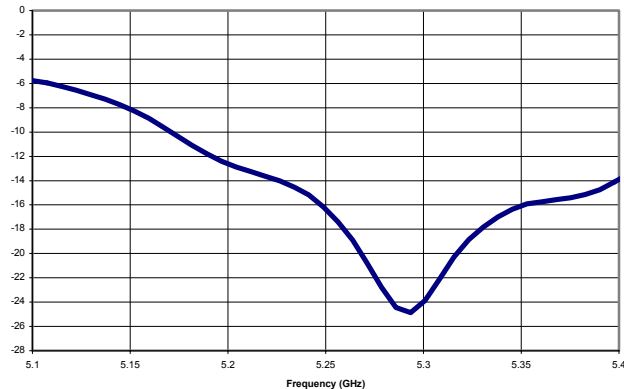
- *Very Efficient MLA Technology*
- *U-NII/HyperLAN2 Band*
- *Uni-directional Pattern*
- *Peak Gain +2.2 dBi*
- *Low Profile for Embedded Applications*

This compact Wireless LAN antenna covers the 5.25 GHz frequency band, encompassing frequency allocations for IEEE 802.11a and ETSI HiperLAN2 standards. Using SkyCross' patented MLA technology, this antenna provides superior efficiency and gain directivity in a small package. This antenna is the best performance solution for developers implementing high data rate WLANs in the 5.25 GHz frequency band.

Electrical Specifications

Frequency Range	5150 — 5350 MHz
Gain	2.2 dBi Peak
VSWR	< 2:1
Polarization	Linear
Elevation Pattern	Uni-directional
Feed Impedance	50 Ohms Unbalanced

Typical Return Loss

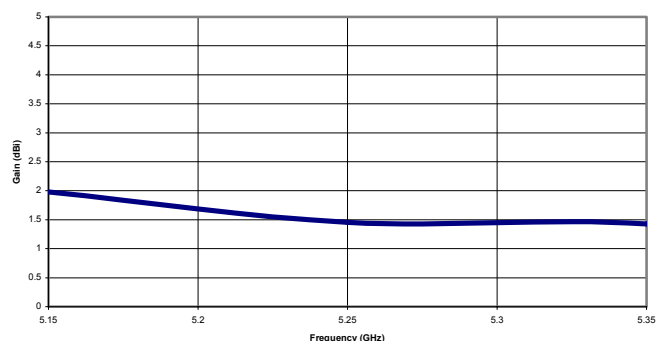


Mechanical Specifications

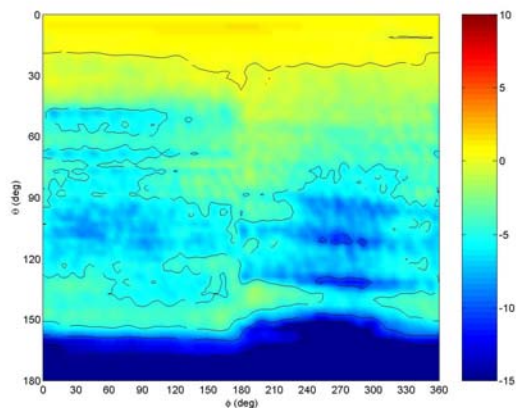
Size	0.88 L x 0.52 W x 0.09 H in 22.5 L x 13.4 W x 2.4 H mm
Weight	2.4 g*

*weight does not include ground plane or connector

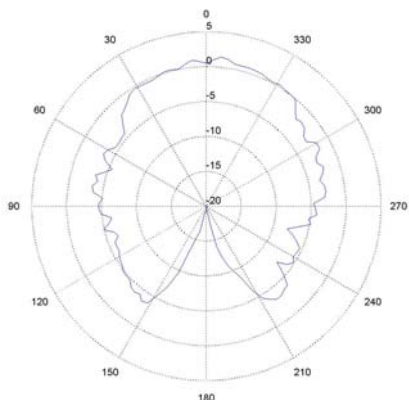
Swept Gain



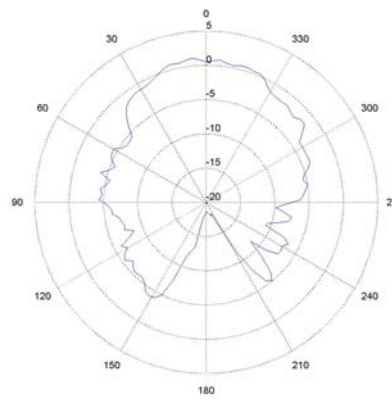
Spherical Gain Contour Map at 5250 MHz



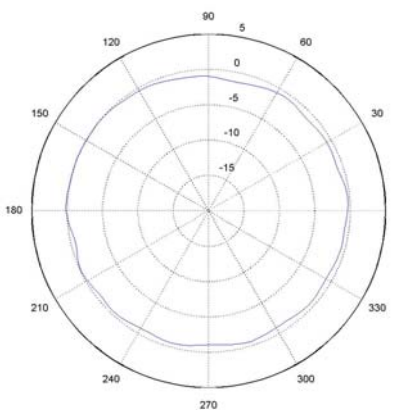
Gain Pattern at 5250 MHz



Phi = 0 degrees



Phi = 90 degrees



Theta = 30 degrees
(60 degrees above horizon)

© 2002 SkyCross, Inc. SkyCross is a trademark of SkyCross, Inc. All rights reserved. Protected by one or more US Patents, including No. 5,790,080. Additional US and Foreign patents pending. Specification subject to change without notice.

For information regarding SkyCross Inc. and its products, see website at www.skycross.com, email info@skycross.com or call 321-308-6600