
SH7718/08/02 (SH-3 Series)

SuperHTM RISC Processor Product Brief

HITACHI

Description

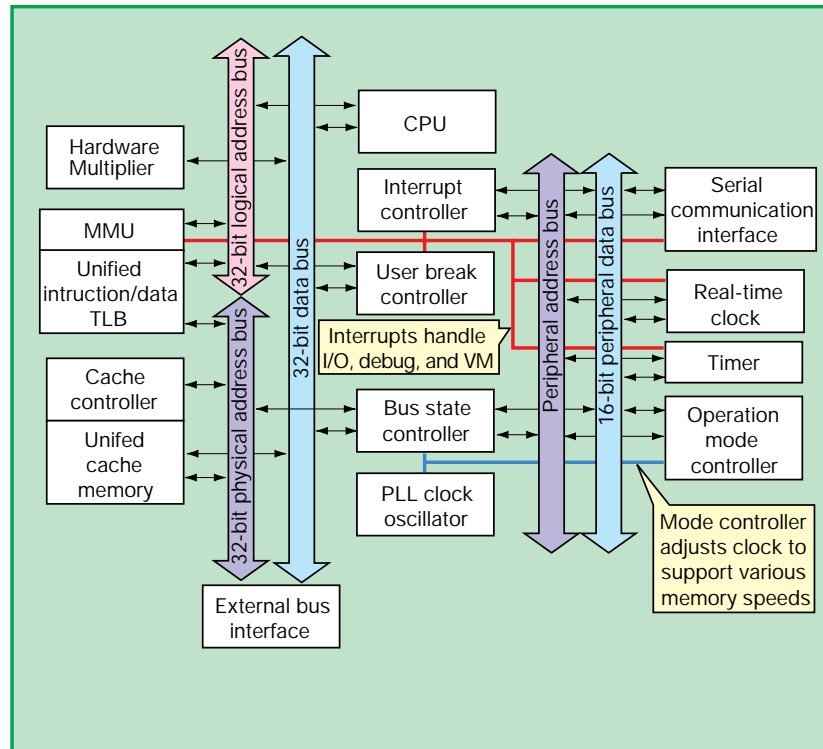
The SH7718/SH7708/SH7702 (SH-3 Series) are high performance, cost-effective, and highly integrated 32-bit RISC microprocessors for embedded applications. The SuperHTM architecture is the leader in code density among RISC microprocessors, reducing memory costs in embedded applications.

The SH-3 Series processors are used in consumer, data processing, industrial, and communication markets. Applications include handheld PCs, digital cameras, Internet appliances, security systems, hard disk drives, cellular phones, and protocol converters. The devices can be paired with a user-defined ASIC device to design a low cost, low IC count, and differentiated system.

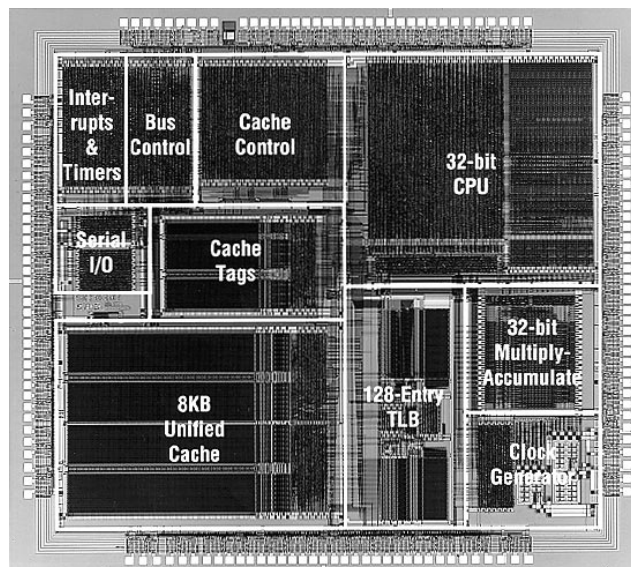
Hitachi optimized the SH7718/SH7708 MMU, cache size, and peripheral mix for Windows[®]CE applications. The SH7702 offers a reduced cache and package size for cost effective applications and other operating systems.

Features

- General
 - 100 MHz/100 MIPS at 3.3 volts: SH7718/SH7708
 - 60 MHz/60 MIPS at 3.3 volts: SH7708
 - 45 MHz/45 MIPS at 3.3 volts: SH7702



SH-3 Architecture



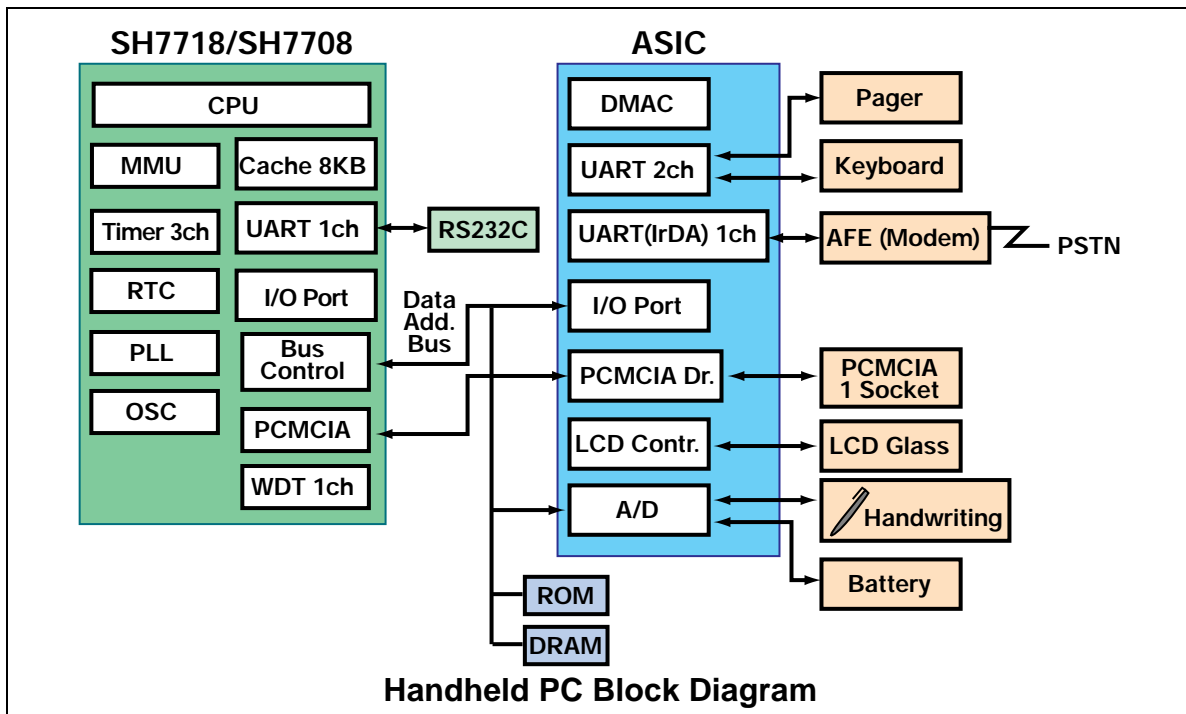
Hitachi SH-3 32 bit RISC Processor

- 144 pin QFP (SH7718)
- 144 pin TQFP (SH7708)
- 120 pin TQFP (SH7702)
- CPU
 - Code compatible with SH7000/7600 series
 - 16 x 32-bit general purpose registers
 - 16-bit fixed instruction length for high code density
 - 32 x 32 --> 64 bits multiply-accumulate unit for special functions such as software modems
 - MMU Designed for Windows[®] CE 1KB, and 4KB page sizes, 128-entry, 4-way set associative TLB (SH7718/SH7708 only)
 - 5 stage pipeline
- FPU (SH7718 only)
 - Single precision
 - Single cycle FMAC
 - 200 MFLOPS
- Instruction set: 68 basic instruction types
- Memory
 - On-chip cache, unified instruction and data
 - 8KB: SH7718/SH7708
 - 2KB: SH7702
 - Write back or write through, LRU cache
 - Low voltage cache to reduce power consumption
 - On-chip bus state controller allows direct connection to DRAM, SDRAM, SRAM, ROM, and Flash ROM
 - 8, 16, or 32-bit data bus support (SH7718/SH7708)
 - 8 and 16-bit data bus support (SH7702)
- Peripherals
 - Timers, 3chx32-bits
 - Watchdog timer
 - Realtime clock
 - PCMCIA control logic
 - Serial communications interface, 1ch (asynchronous/synchronous, with smart card interface)
 - PLL with x1, x2, (x3 SH7718/SH7708 100 MHz only), x4, external clock capability
 - Interrupt controller
- General purpose I/O, 8 lines (SH7708-60 only)
- Dynamic power control
 - Low power modes: sleep and standby
 - Peripheral turn off capability
 - User break controller for on-chip debugging

SH7718/08/02 (SH-3 Series)

Support

- Hardware:
 - Hitachi E7000 emulator and POD
 - Hitachi low cost evaluation board
 - Hitachi D9000 development platform for SH7708 and Windows™CE
 - Third party emulators - Hewlett-Packard, Orion
- Software:
 - Hitachi:
 - C, C++ compiler, assembler, simulator/debugger
 - Third parties:
 - C, C++ compiler, assembler, simulator/debugger, Cygnus Support (gnu), Green Hills Software, Microsoft® VC++ for Windows CE
 - Task and timing simulation - CARDtools™ Systems
- Operating Systems:
Geoworks, Hitachi OS, Java, LINUX, Nucleus+, OS-9, pSOS, VxWorks, Windows™CE



Middleware

- V.34 (up to 56 Kbps) Data/FAX software modem
- Voice recognition
- Voice compression
- Handwriting recognition
- JPEG video compression
- Image compression for FAX: MH, MR, MMR

Contacts

Sales & Marketing Headquarters

Hitachi Semiconductor (America) Inc.
2000 Sierra Point Parkway
Brisbane, CA 94005
Literature Requests:
1-800-285-1601
www.hitachi.com/se
micronductor

Western

Hitachi Semiconductor (America) Inc.
1740 Technology Dr.
Suite 500
San Jose, CA 95110
(408) 451-9570

Central

Hitachi Semiconductor (America) Inc.
Two Lincoln Centre
5420 LBJ Freeway
Suite 1446
Dallas, TX 75240
(214) 991-4510

Eastern

Hitachi Semiconductor (America) Inc.
25 Mall Road
Burlington, MA 01803
(617) 229-2150

Southwest

Hitachi Semiconductor (America) Inc.
2030 Main Street
Suite 450
Irvine, CA 92714
(714) 553-8500

Mountain Pacific

Hitachi Semiconductor (America) Inc.
4600 S. Ulster Street
Suite 690
Denver, CO 80237
(303) 779-5535

Bloomington

Hitachi Semiconductor (America) Inc.
3800 W. 80th Street,
Suite 1550
Bloomington, MN 55431
(612) 896-3444

Great Lakes

Hitachi Semiconductor (America) Inc.
Fairlane Plaza
North, Suite 311
290 Town Center Drive
Dearborn, MI 48126
(313) 271-4410

North Central

Hitachi Semiconductor (America) Inc.
500 Park Boulevard
Suite 415
Itasca, IL 60143
(708) 773-4864

South Central

Hitachi Semiconductor (America) Inc.
One Westchase Center
10777 Westheimer Dr.
Suite 1040
Houston, TX 77042
(713) 974-0534

IBM Engineering

Hitachi Semiconductor (America) Inc.
6907 Capitol of Texas Hwy
Suite 210
Austin, TX 78731
(512) 418-9360

South Eastern/IBM Labs

Hitachi Semiconductor (America) Inc.
5511 Capitol Center Dr.
Suite 204
Raleigh, NC 27606
(919) 233-0800

Mid-Atlantic

Hitachi Semiconductor (America) Inc.
325 Columbia Turnpike
Suite 203
Florham Park, NJ 07932
(201) 514-2100

Southeast

Hitachi Semiconductor (America) Inc.
4901 N.W. 17th Way
Suite 302
Ft. Lauderdale, FL 33309
(305) 491-6154

IBM

Hitachi Semiconductor (America) Inc.
21 Old Main Street
Suite 206
Fishkill, NY 12524
(914) 897-3000

Ottawa

Hitachi (Canadian), Ltd.
320 March Road
Suite 602
Kanata, Ontario,
Canada K2K2E3
(613) 591-1990

Toronto

Hitachi (Canadian), Ltd.
6740 Campobello Road
Mississauga, Ontario
Canada L5N 2L8
(416) 826-4100

Calgary

Hitachi (Canadian), Ltd.
10655 Southport Road S.W.,
Suite 460
Calgary, Alberta
Canada T2W4Y1
(403) 278-1881