

# RC5036

## Dual Adjustable Voltage Regulator Controller

### Features

- Combines switching regulator and low dropout linear regulator in single chip
- Linear regulator on/off control
- Each output voltage adjustable from 1.5V to 3.6V
- Built-in soft start
- Switcher can be configured for 13A loads, linear for 5A
- Precision trimmed low TC voltage reference
- Constant On-Time oscillator
- Small footprint 16 lead SOIC package

### Applications

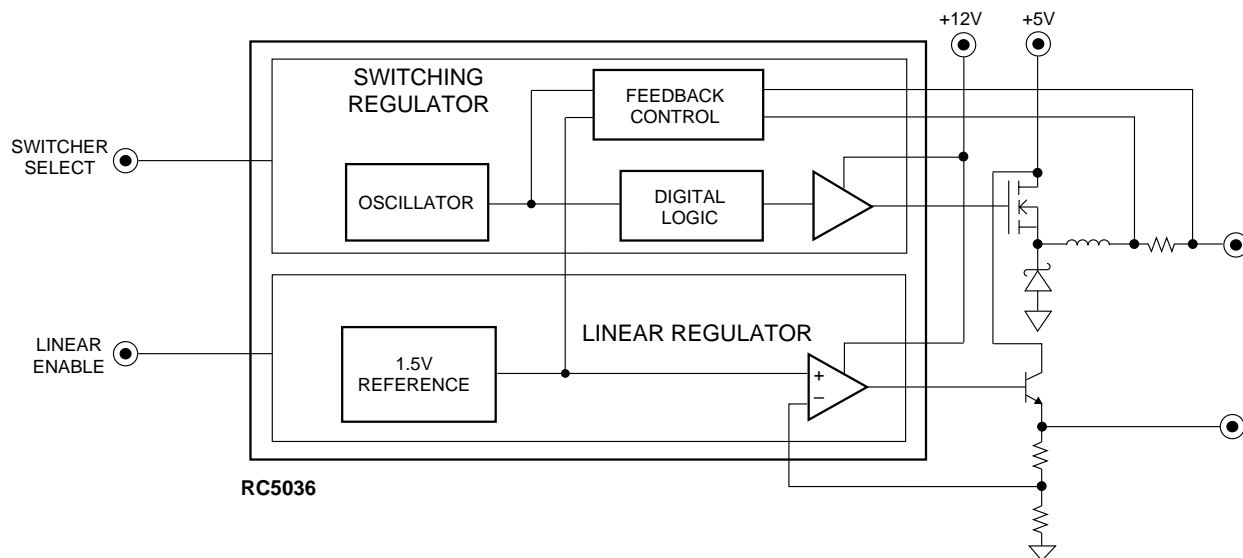
- RAMBUS or SDRAM power with ACPI support
- I/O and AGP power
- High efficiency power for DSPs
- Programmable dual power supply for high current loads

### Description

The RC5036 combines a switch-mode DC-DC converter with a low-dropout linear regulator. In addition, it integrates the circuitry required to switch the DC-DC converter output between 3.5V and a user-selectable voltage from 1.5V to 3.6V as well as an enable function to allow the linear regulator to be turned off when not required. RC5036 has built-in soft start feature which offers system protection during power-up by reducing both inrush current and output overshoot.

With the appropriate external components, the DC-DC converter can deliver load current as high as 13A and the linear regulator can provide 5A. The DC-DC converter and the linear regulator can be set independently using two external resistors each to any value between 1.5V and 3.6V. The factory trimmed internal reference achieves tight tolerance voltage regulation on both outputs. Independent short circuit protection is also provided.

### Block Diagram



## Pin Assignments

LIN_EN	1	16	SWCTRL
VREF	2	15	CEXT
IFBH	3	14	GNDA
IFBL	4	13	VSCL
FBSW	5	12	LDRV
VCCA	6	11	VCCL
VFBL	7	10	VCCP
GNDP	8	9	SDRV

## Pin Descriptions

Pin Name	Pin Number	Pin Function Description
LIN_EN	1	<b>Linear regulator enable input.</b> Accepts TTL/open collector input levels. A logic level HIGH on this pin disables the output of the linear regulator.
VREF	2	<b>Voltage reference test point.</b> This pin provides access to the internal precision 1.5V bandgap reference and should be decoupled to ground using a 0.1μF ceramic capacitor. No load should be connected to this pin.
IFBH	3	<b>High side current feedback for switching regulator.</b> Pins 3 and 4 are used as the inputs for the current feedback control loop and as the short circuit current sense points. Careful layout of the traces from these pins to the current sense resistor is critical for optimal performance of the short circuit protection scheme. See Applications Discussion for details.
IFBL	4	<b>Low side current feedback for switching regulator.</b> See Applications Discussion for details.
FBSW	5	<b>Voltage feedback for switching regulator.</b> This input is active when a logic level LOW is input on pin 16 (SWCTRL). Using two external resistors, it sets the output voltage level for the switching regulator. See Applications Discussion for details.
VCCA	6	<b>Switching Regulator V<sub>cc</sub>.</b> Power supply for switching regulator control circuitry and voltage reference. Connect to system 5V supply and decouple to ground with 0.1μF ceramic capacitor.
VFBL	7	<b>Voltage feedback for linear regulator.</b> Using two external resistors, this pin sets the output voltage level for the linear regulator. See Applications Discussion for details.
GNDP	8	<b>Power Ground.</b> Return pin for high currents flowing in pins 9, 10 and 12 (SDRV, VCCP and LDRV). Connect to a low impedance ground. See Applications Discussion for details.
SDRV	9	<b>FET driver output for switching regulator.</b> Connect this pin to the gate of the N-channel MOSFET Q1 as shown in Figure 1. The trace from this pin to the MOSFET gate should be kept as short as possible (less than 0.5"). See Applications Discussion for details.
VCCP	10	<b>Switching regulator gate drive V<sub>cc</sub>.</b> Power supply for SDRV output driver. Connect to system 12V supply with R-C filter shown in Figure 1. See Applications Discussion for details.
VCCL	11	<b>Linear Regulator V<sub>cc</sub>.</b> Power supply for LDRV output op-amp. Connect to system 12V supply and decouple to ground with 0.1μF ceramic capacitor.
LDRV	12	<b>Output driver for linear regulator.</b> Connect this pin to the base of an NPN transistor. When pin 1 (LIN_EN) is pulled HIGH, the linear regulator is disabled and pin 12 will be pulled low internally.
VSCL	13	<b>Low side current sense for linear regulator.</b> Connect this pin between the sense resistor and the collector of the power transistor. The high side current sense is internally connected to pin 6 (VCCA). Layout is critical to optimal performance of the linear regulator short circuit protection scheme. See Applications Discussion for details.

## Pin Descriptions (continued)

Pin Name	Pin Number	Pin Function Description
GNDA	14	<b>Analog ground.</b> All low power internal circuitry returns to this pin. This pin should be connected to system ground so that ground loops are avoided. See Applications Discussion for details.
CEXT	15	<b>External capacitor.</b> A 180pF capacitor is connected to this pin as part of the constant on-time pulse width circuit. Careful layout of this pin is critical to system performance. See Applications Discussion for details.
SWCTRL	16	<b>Switching regulator control input.</b> Accepts TTL/open collector input levels. A logic level HIGH on this pin presets the switching regulator output voltage at 3.5V using internal resistors. A logic level LOW on this pin will select the output voltage set by two external resistors and the voltage feedback control pin 5 (VFBSW). See Applications Discussion for details.

## Absolute Maximum Ratings

Supply Voltages, VCCA, VCCL, VCCP	13V
Junction Temperature, T <sub>J</sub>	+150°C
Storage Temperature, T <sub>S</sub>	-65 to +150°C
Lead Soldering Temperature, 10 seconds	300°C
Thermal Resistance Junction-to-Ambient, $\theta_{JA}$	112°C/W

### Note:

- Functional operation under any of these conditions is not implied. Performance is guaranteed only if Operating Conditions are not exceeded.

## Operating Conditions

Parameter	Conditions	Min.	Typ.	Max.	Units
Switching Regulator VCC, VCCA		4.75	5	5.25	V
Linear Regulator VCC, VCCL		11.4	12	12.6	V
Logic Inputs, SWCTRL, LIN_EN	Logic HIGH Logic LOW	2.4		0.8	V V
Ambient Operating Temperature, T <sub>A</sub>		0		70	°C
Drive Gate Supply, VCCP		9.5	12	12.6	V

## Electrical Characteristics—Switch-Mode Regulator

(VCCA = 5V, VCCL = 12V, T<sub>A</sub> = 25°C using circuit of Figure 1, unless otherwise noted)

The • denotes specifications which apply over the full ambient operating temperature range.

Parameter	Conditions		Min.	Typ.	Max.	Units
Output Voltage, VOSW <sup>1</sup>	SWCTRL = HIGH Set by internal resistors	•		3.5		V
Output Voltage, VOSW <sup>1</sup>	SWCTRL = LOW Set by external resistors	•	1.5		3.6	V
Setpoint Accuracy <sup>2</sup>	ISW = 5A		-1.2		+1.2	%Vo
Output Temperature Drift	T <sub>A</sub> = 0°C–70°C	•		40		ppm
Line Regulation	VCCA = 4.75 to 5.25V ISW = 5A			0.10	0.15	%Vo
Load Regulation	ISW = 0 to 5A or 5A to 10A			±0.9	±1.3	%Vo
Output Ripple, peak-peak	20MHz BW, ISW = 5A			15		mV
Cumulative DC Accuracy <sup>3</sup>		•		±55	±100	mV
Efficiency	ISW = 5A		80	87		%
Output Driver Current	Open Loop	•	0.5			A
Short Circuit Threshold Voltage		•	70	90	100	mV
On Time Pulse Width <sup>4</sup>	CEXT = 180pF			3.5		μs

### Notes:

1. When the SWCTRL pin is HIGH or left open, the switch-mode regulator output will be preset at 3.5V using internal precision resistors. When the SWCTRL pin is LOW, the output voltage may be programmed with external resistors. Please refer to the Applications Section for output voltage selection information.
2. Setpoint accuracy is the initial output voltage variability under the specified conditions. When SWCTRL is LOW, the matching of the external resistors will have a major influence on this parameter.
3. Cumulative DC accuracy includes setpoint accuracy, temperature drift, line and load regulation, and output ripple.
4. The on-time pulse width of the oscillator is preset using external capacitor CEXT. See Typical Operating Characteristics curves.

## Electrical Characteristics—Linear Regulator

(VCCA = 5V, VCCL = 12V, T<sub>A</sub> = 25°C using circuit in Figure 1, unless otherwise noted)

The • denotes specifications which apply over the full ambient operating temperature range.

Parameter	Conditions		Min	Typ	Max	Units
Output Voltage, VOL <sup>1</sup>	Set by external resistors	•	1.5		3.6	V
Setpoint Accuracy <sup>2</sup>	I <sub>L</sub> =0.5A, using 0.1% resistors		-1.5		+1.5	%
Output Temperature Drift		•		40		ppm
Line Regulation	VCCL = 11.4V to 12.6V, I <sub>L</sub> = 3A			0.1	0.15	%Vo
Load Regulation	I <sub>L</sub> = 0 to 5A			±0.7	±1	%Vo
Output Noise	0.1 to 20KHz			1		mV
Cumulative DC Accuracy <sup>3</sup>		•		±1.7	±3	%
Crosstalk <sup>4</sup>	ISW = 5A			35		mVpp
Short Circuit Comparator Threshold		•	40	50	60	mV
Op-amp Output Current	Open Loop		50	70		mA

### Notes:

1. When the LIN\_EN pin is LOW, the linear regulator output is set with external resistors. When the LIN\_EN pin is HIGH, the linear regulator is disabled and will exhibit no output voltage. Please refer to the Application Section for output voltage selection information.
2. Setpoint accuracy is the initial output voltage variability under the specified conditions. The matching of the external resistors will have a major influence on this parameter.
3. Cumulative DC accuracy includes setpoint accuracy, temperature drift, line and load regulation.
4. Crosstalk is defined as the amount of switching noise from the switch-mode regulator that appears on the output of the linear regulator when both outputs are in a static load condition.

## Electrical Characteristics—Common

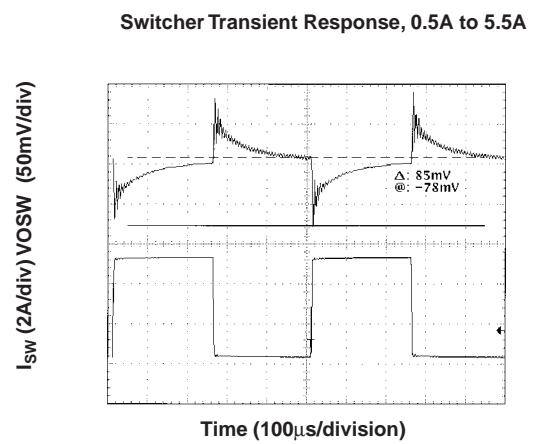
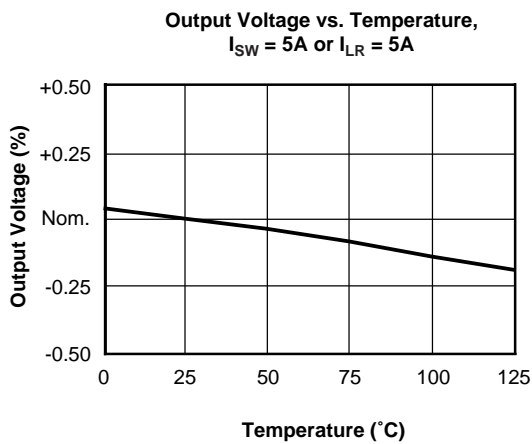
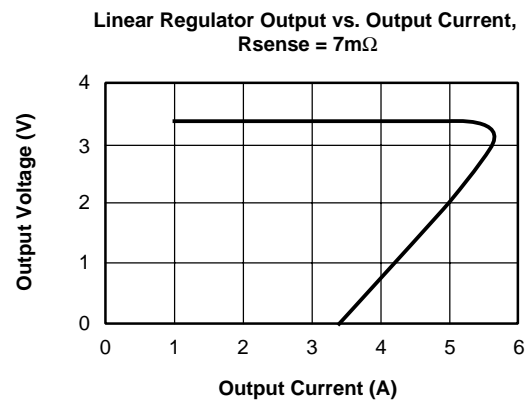
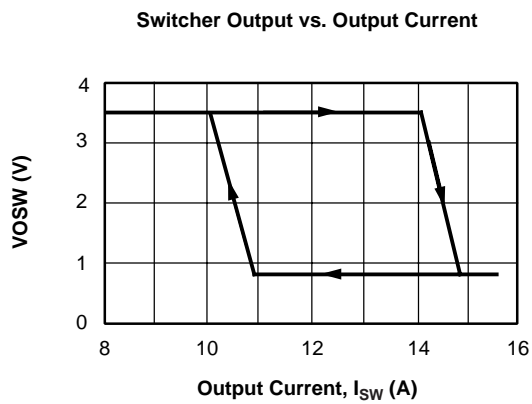
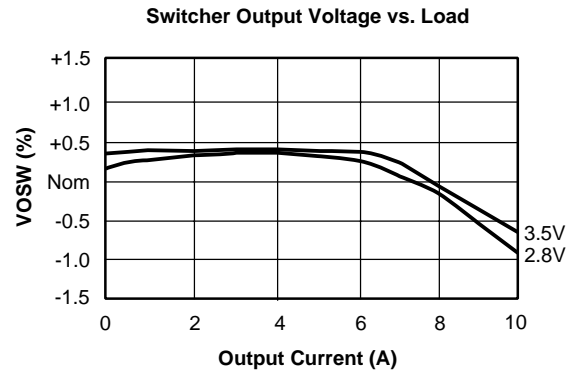
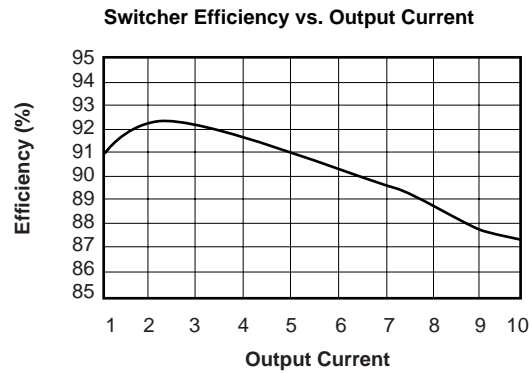
(VCCA = 5V, VCCL = 12V, T<sub>A</sub> = 25°C using circuit of Figure 1, unless otherwise noted)

The • denotes specifications which apply over the full ambient operating temperature range.

Parameter	Conditions		Min	Typ	Max	Units
Reference Voltage, VREF			1.485	1.5	1.515	V
VREF PSRR			60			dB
VCCA Supply Current	Independent of load	•		5	15	mA
VCCP Supply Current	ISW = 5A	•		20	25	mA
VCCL Supply Current	I <sub>L</sub> = 2A	•		5		mA

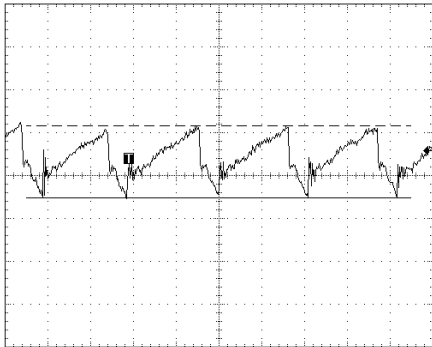
## Typical Operating Characteristics

(VCCA = 5V, VCCL = 12V and T<sub>A</sub> = +25°C using circuit in Figure 1, unless otherwise noted)



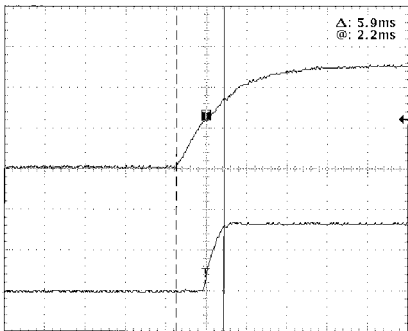
Typical Operating Characteristics (continued)

Switcher Output Ripple, IOUT = 10A



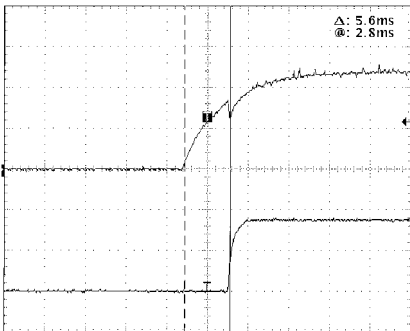
Time (2µs/division)

Linear Output Startup, System Power-Up



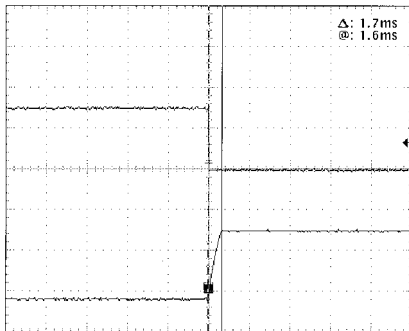
Time (5ms/division)

Switcher Output Startup, System Power-Up



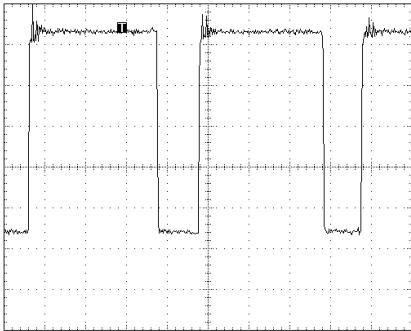
Time (5ms/division)

Linear Output Startup, Using LIM\_EN Pin



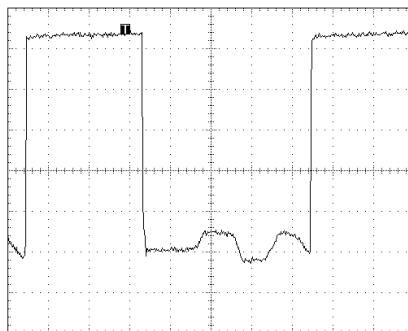
Time (5ms/division)

Pin 9 (SDRV), 10A Load



Time (1µs/division)

Pin 9 (SDRV), 0.1A Load



Time (1µs/division)

## Application Circuit

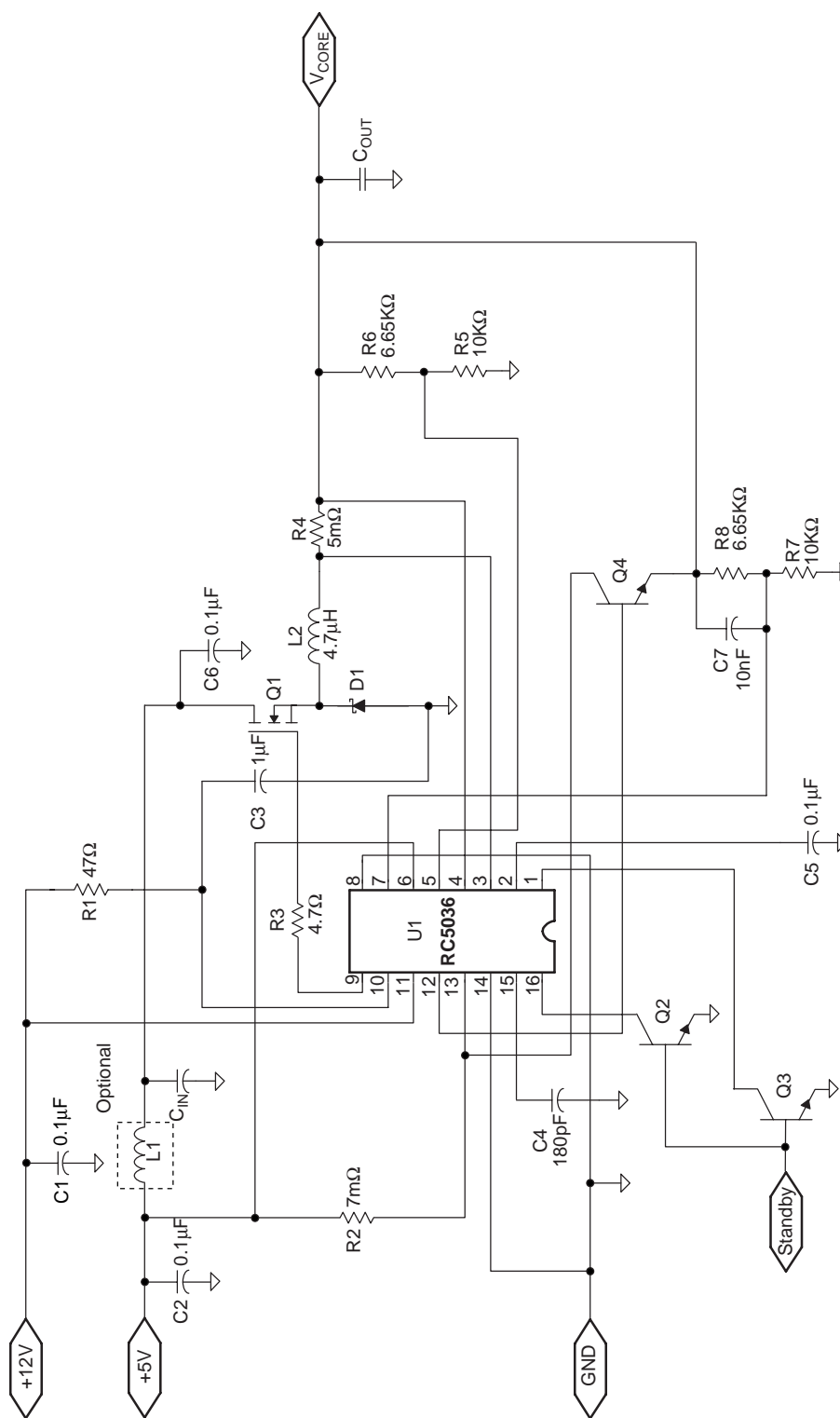


Figure 1. RAMBUS Power with ACPI support, 10A Main, 100mA Standby



**Table1. Bill of Materials for a RC5036 RAMBUS Application**

Qty.	Reference	Manufacturer Part Order #	Description	Requirements and Comments
4	C1-2, C5-6	Any	100nF, 25V Capacitor	
1	C3	Any	1 $\mu$ F, 25V Capacitor	
1	C4	Any	180pF, 50V Capacitor	C0G
1	C7	Any	10nF, 25V Capacitor	
3	CIN	Sanyo 10MV1200GX	1200 $\mu$ F, 10V Aluminum Capacitor	IRMS = 2A , See Equation (2) in Applications
1	COUT	Rubycon 6.3ZL1500M	1500 $\mu$ F, 6.3V Aluminum Capacitor	ESR = 23m $\Omega$
1	R1	Any	47.5 $\Omega$	
1	R2	N/A	300m $\Omega$	PCB Trace Resistor, see Applications
1	R3	Any	4.75 $\Omega$	
1	R4	N/A	5m $\Omega$ PCB Trace Resistor, 1W	PCB Trace Resistor, see Applications
2	R5, R7	Any	10K $\Omega$	
2	R6, R8	Any	6.65K $\Omega$	
1	D1	Motorola MBRB1545CT	15A, 45V Schottky	
1	Q1	Fairchild FDB6030L	30V, 14m $\Omega$ Logic Level MOSFET	
3	Q2-4	Fairchild MMBT2222A	40V, 1A NPN	
Optional	L1	Any	2.5 $\mu$ H Inductor	ISAT > 8A
1	L2	Any	4.7 $\mu$ H Inductor	ISAT > 13A
1	U1	Fairchild RC5036M	PWM Controller	

## Application Information

The RC5036 contains a precision trimmed zero TC voltage reference, a constant-on-time architecture controller, a high current switcher output driver, a low offset op-amp, and switches for selecting various output modes. The block diagram in Figure 2 shows how the RC5036 in combination with the external components achieves a switchable dual power supply.

### Switch-Mode Control Loop

The main control loop for the switch-mode converter consists of a current conditioning amplifier and one of the two voltage conditioning amplifiers that take the raw voltage and current information from the regulator output, compare them against the precision reference and present the error signal to the input of the constant-on-time oscillator. The two voltage conditioning amplifiers act as an analog switch to select

between the internal resistor divider network (set for 3.5V) or an external resistor divider network (adjustable for 1.5V to 3.6V.) The switch-mode select pin determines which of the two amplifiers is selected. The current feedback signals come across the Iout sense resistor to the IFBH and IFBL inputs of the RC5036. The error signals from both the current feedback loop and the voltage feedback loop are summed together and used to control the off-time duration of the oscillator. The current feedback error signal is also used as part of the RC5036 short-circuit protection.

### Linear Control Loop

The low-offset op-amp is configured to be the controlling element in a precision low-drop-out linear regulator. As can be seen from Figure 2, the op-amp is used to compare the divided down output of the linear regulator to the precision reference. The error signal is used to control either an N-channel MOSFET or a power NPN transistor.

## High Current Output Drivers

The RC5036 switching high current output driver (SDRV) contains high speed bipolar power transistors configured in a push-pull configuration. The output driver is capable of supplying 0.5A of current in less than 100ns. The driver's power and ground are separated from the overall chip power and ground for added switching noise immunity.

## Internal Reference

The reference in the RC5036 is a precision band-gap type reference. Its temperature coefficient is trimmed to provide a near zero TC. For guaranteed stable operation under all conditions, a 0.1 $\mu$ F capacitor is recommended on the VREF output pin. No load may be attached to this pin.

## Constant-On-Time Oscillator

The RC5036 switch-mode oscillator is designed as a fixed on-time, variable off-time oscillator. The constant-on-time oscillator consists of a comparator, an external capacitor, a fixed current source, a variable current source, and an analog switch that selects between two threshold voltages for the comparator. The external timing capacitor is alternately

charged and discharged through the enabling and disabling of the fixed current source. The variable current source is controlled from the error inputs that are received from the current and voltage feedback signals. The oscillator off-time is controlled by the amount of current that is available from the variable current source to charge the external capacitor up to the high threshold level of the comparator. The on-time is set by the constant current source that discharges the external capacitor voltage down to the lower comparator threshold.

## Using SWCTRL and LIM\_EN

When the SWCTRL pin is HIGH, the switching regulator will set its output at 3.5V using two internal precision resistors. When this pin is LOW, the switching regulator output can be set to any voltage between 1.5V and 3.6V using external precision resistors. The LIM\_EN pin is used to enable or disable the linear regulator. When the LIM\_EN pin is HIGH, the linear regulator will be disabled. If this pin is LOW, the linear regulator output can be set from 1.5V to 3.5V using external precision resistors. The linear regulator output can be left on to provide power to other 3.3V components.

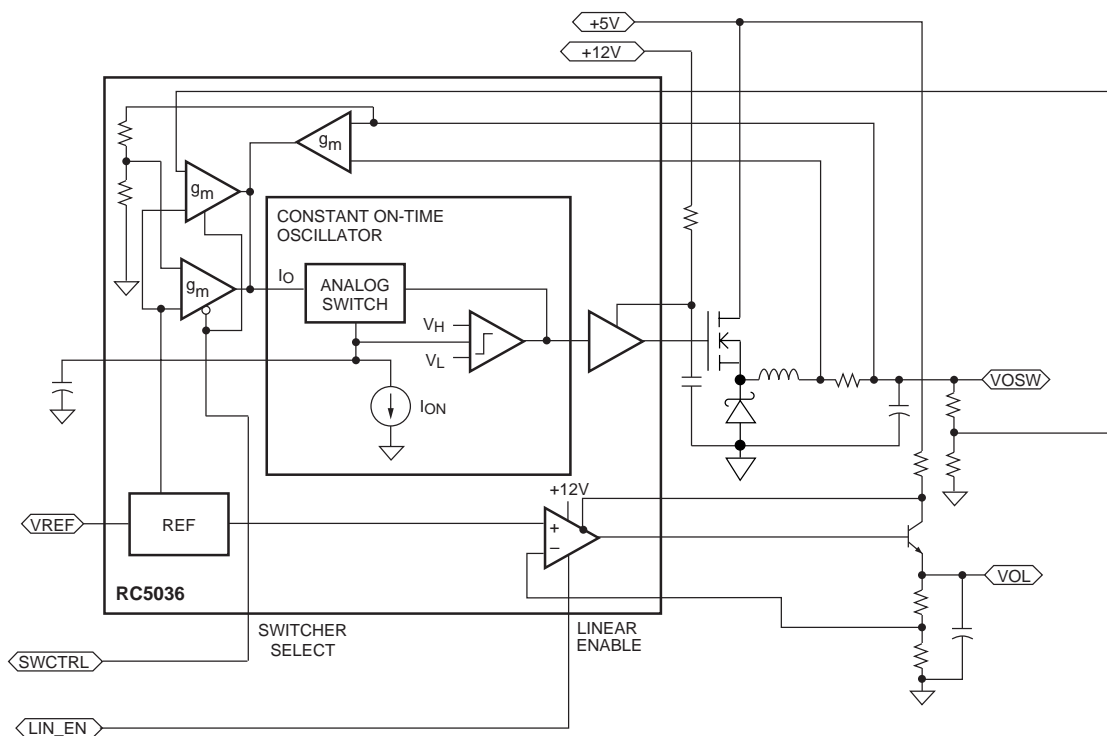


Figure 2. RC5036 Block Diagram

## Output Voltage Selection

The RC5036 precision reference is trimmed to be 1.5V nominally. When using the RC5036, the system designer has complete flexibility in choosing the output voltage for each regulator from 1.5V to 3.6V. This is done by appropriately selecting the feedback resistors. These could be 0.1% resistors to realize optimum output accuracy. The following equations determine the output voltages of the two regulators:

Switching Regulator:

$$V_{OUT} = 1.5 \times \left( \frac{R6 + R5}{R5} \right)$$

Linear Regulator:

$$V_{OUT} = 1.5 \times \left( \frac{R8 + R7}{R7} \right)$$

where  $R6 > 1.5k\Omega$  and  $(R5 + R6) \leq 25k\Omega$  and  $R8 > 1.5k\Omega$  and  $(R7 + R8) \leq 25k\Omega$

Example:

For 3.3V,

$$V_{OUT} = 1.5 \times \left( \frac{R6 + R5}{R5} \right) = 1.5 \times \left( \frac{6.65k + 10k}{10k} \right) = 3.3V$$

## Input Capacitors

The number of input capacitors required for the RC5036 is dependent on their ripple current rating, which assures their rated life. The number required may be determined by

$$\text{No. Caps} = \frac{I_{out} \sqrt{DC - DC^2}}{I_{rating}} \quad (2)$$

where the duty cycle  $DC = V_{out}/V_{in}$ . For example, with a 1.5V output at 10A, 5V input, and using the Sanyo capacitors specified in Table 1 which have a 2A ripple current rating, we have  $DC = 1.5/5 = 0.3$ , and

$$\text{No. Caps} = \frac{10 \sqrt{0.03 - 0.3^2}}{2} = 2.29$$

so that we need 3 input capacitors.

## Linear Regulator Design Considerations

Figure 1 shows the application schematic for the RC5036 with an NPN used for the linear regulator.

Careful consideration must be given to the base current of the power NPN device. The base current to the power NPN device is limited by:

- The RC5036 op-amp output current (50mA)
- The internal power dissipation of the RC5036 package
- The  $\beta$  of the power NPN device.

The internal RC5036 power dissipation is the most severe limitation for this application. For optimum reliability, we require that the junction temperature not exceed 130°C; thus we can calculate the maximum power dissipation allowable for this 16-lead SOIC package as follows:

$$P_D = \frac{T_{J(max)} - T_A}{R_{\theta JA}}$$

If we assume that the ambient temperature  $T_A$  is 70°C and the thermal resistance of the 16-lead SOIC package is 112°C/W, then the maximum power dissipation for the IC is:

$$P_D = \frac{130 - 70}{112} \leq 0.533W$$

$$P_D = P_{SW} + P_{LR} =$$

$$(35mA \times 5.25V) + (12.6V - V_{OUT} - V_{BE}) \times I_{OL} \leq 0.533W$$

where  $P_{SW}$  is the internal power dissipation of the switching regulator and  $P_{LN}$  is the internal power dissipation of the linear regulator.  $I_{OL}$  is the linear regulator op-amp output current. For  $V_{OUT} = 3.3V$  nominal, the worst case output will be determined by the current used.

For example, for a worst case  $V_{OUT} = 3.135V$ , the maximum op-amp output current is:

$$I_{OL} = \frac{0.533W - (35mA \times 5.25V)}{(12.6V - 3.135V - 0.8V)} \leq 40mA$$

$$\beta \geq \frac{3000mA}{40mA} = 75$$

The power NPN transistor must have a minimum  $\beta$  of 75 at  $I_L = 3A$  in order to meet the internal power dissipation limit of the 16-SOIC package.

## Short Circuit Considerations

### For the Switch-Mode Regulator

The RC5036 uses a current sensing scheme to limit the load current if an output fault condition occurs. The current sense resistor carries the peak current of the inductor, which is greater than the maximum load current due to ripple currents flowing in the inductor. The RC5036 will begin to limit the output current to the load by turning off the top-side FET driver when the voltage across the current-sense resistor exceeds the short circuit comparator threshold voltage ( $V_{th}$ ). When this happens the output voltage will temporarily go out of regulation. As the voltage across the sense resistor becomes larger, the top-side MOSFET will continue to turn off until the current limit value is reached. At this point, the RC5036 will continuously deliver the limit current at a reduced output voltage level. The short circuit comparator threshold voltage is typically 90mV, with a variability of  $\pm 10$ mV. The ripple current flowing through the inductor is typically 0.5A. Refer to Application Note AM-53 for detailed discussions. The sense resistor value can be approximated as follows:

$$R_{SENSE} = \frac{V_{th,min}}{I_{PK}} \times (1 - TF) = \frac{V_{th,min}}{0.5A + I_{LOAD,MAX}} \times (1 - TF)$$

where TF = Tolerance Factor for the sense resistor and 0.5A accounts for the inductor current ripple.

Since the value of the sense resistor is often less than 10m $\Omega$ , care should be taken in the layout of the PCB. Trace resistance can contribute significant errors. The traces to the IFBH and IFBL pins of the RC5036 should be Kelvin connected to the pads of the current-sense resistor. To minimize the influence of noise, the two traces should be run next to each other.

### For the Linear Regulator

The analysis for short circuit protection of the linear regulator is much simpler than that of the switching regulator. The formula for the inception point of short-circuit protection for the linear regulator is:

$$R_{SENSE} = \frac{V_{th,min}}{I_{LOAD,MAX}} \times (1 - TF)$$

$$V_{th} = 45mV \pm 8mV \text{ and } I_{LOAD,MAX} = 5A,$$

$$R_{SENSE} = \frac{37mV}{5A} \times (1 - 29\%) = 5.3m\Omega \text{ for using an embedded PC trace resistor}$$

$$R_{SENSE} = \frac{37mV}{5A} \times (1 - 5\%) = 7.0m\Omega \text{ for using a discrete resistor}$$

## Schottky Diode

In Figure 1, MOSFET Q1 and flyback diode D1 are used as complementary switches in order to maintain a constant current through the output inductor L1. As a result, D1 will have to carry the full current of the output load when the power MOSFET is turned off. The power in the diode is a direct function of the forward voltage at the rated load current during the off time of the FET. The following equation can be used to estimate the diode power:

$$P_{DIODE} = I_D \times V_D \times (1 - \text{DutyCycle})$$

where  $I_D$  is the forward current of the diode,  $V_D$  is the forward voltage of the diode, and DutyCycle is defined the same as

$$\text{Duty Cycle} = \frac{V_{out}}{V_{in}}$$

For the Motorola MBRB1545CT Power Rectifier used in Figure 1,

$$P_{DIODE} = 10A \times 0.65 \times (1 - 73.1\%) = 1.75W$$

It is recommended that the diode T0-220 package be attached to a heatsink.

## Board Design Considerations

### RC5036 Placement

Preferably the PC layer directly underneath the RC5036 should be the ground layer. This serves as extra isolation from noisy power planes.

### MOSFET Placement

Placement of the power MOSFET is critical in the design of the switch-mode regulator. The FET should be placed in such a way as to minimize the length of the gate drive path from the RC5036 SDRV pin. This trace should be kept under 0.5" for optimal performance. Excessive lead length on this trace causes high frequency noise resulting from the parasitic inductance and capacitance of the trace. Since this voltage can transition nearly 12V in around 100nsec, the resultant ringing and noise will be very difficult to suppress. This trace should be routed on one layer only and kept well away from the "quiet" analog pins of the device: VREF, CEXT, FBSW, IFBH, IFBL, and VFBL. Refer to Figure 3.

### Inductor and Schottky Diode Placement

The inductor and fly-back Schottky diode must be placed close to the source of the power MOSFET. The node connecting the inductor and the diode swing between the drain voltage of the FET and the forward voltage of the Schottky diode. It is recommended that this node be converted to a plane if possible. This node is part of the high current path in the design, and is best treated as a plane to minimize the parasitic resistance and inductance on that node.

Most PC board manufacturers utilize 1/2oz copper on the top and bottom signal layers of the PCB; thus, it is not recommended to use these layers to route the high current portions of the regulator design. Since it is more common to use 1 oz. copper on the PCB inner layers, it is recommended to use those layers to route the high current paths in the design.

### Capacitor Placement

One of the keys to a successful switch-mode power supply design is correct placement of the low ESR capacitors. Decoupling capacitors serve two purposes; first there must be enough bulk capacitance to support the expected transient current, and second, there must be a variety of values and capacitor types to provide noise suppression over a wide

range of frequencies. The low ESR capacitors on the input side (5V) of the FET must be located close to the drain of the power FET. Minimizing parasitic inductance and resistance is critical in suppressing the ringing and noise spikes on the power supply. The output low ESR capacitors need to be placed close to the output sense resistor to provide good decoupling at the voltage sense point. One of the characteristics of good low ESR capacitors is that the impedance gradually increases as the frequency increases. Thus for high frequency noise suppression, good quality low inductance ceramic capacitors need to be placed in parallel with the low ESR bulk capacitors. These can usually be 0.1μF 1206 surface mount capacitors.

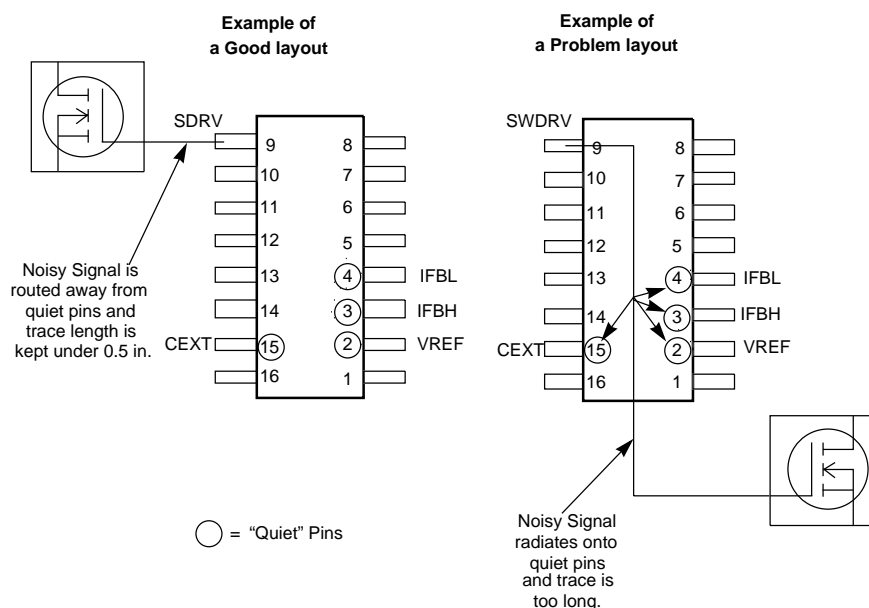


Figure 3. Examples of good and poor layouts

### Power and Ground Connections

The connection of VCCA to the 5V power supply plane should be short and bypassed with a 0.1μF directly at the VCCA pin of the RC5036. The ideal connection would be a via down to the 5V power plane. A similar arrangement should be made for the VCCL pin that connects to +12V, though this one is somewhat less critical since it powers only the linear op-amp. Each ground should have a separate via connection to the ground plane below.

### MOSFET Gate Bias

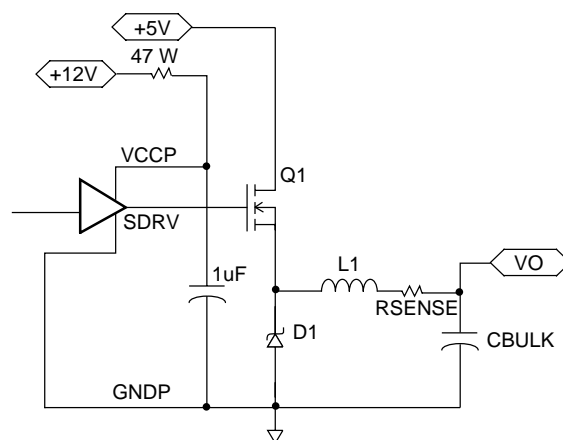


Figure 4. 12V Gate Bias Configuration

A 12V power supply is used to bias the VCCP. A 47 $\Omega$  resistor is used to limit the transient current into VCCP. A 1 $\mu$ F capacitor filter is used to filter the VCCP supply and source the transient current required to charge the MOSFET gate capacitance. This method provides sufficiently high gate bias voltage to the MOSFET ( $V_{GS}$ ), and therefore reduces  $R_{DS(ON)}$  of the MOSFET and its power loss.

Figure 4 provides about 5V of gate bias which works well when using typical logic-level MOSFETs.

### **Layout Gerber File and Silk Screen**

A reference design for motherboard implementation of the RC5036 along with the Layout Gerber File and the Silk Screen is available. Please call Fairchild Electronics Semiconductor Division's Marketing Department at 408-822-2550 to obtain this information.

### **RC5036 Evaluation Board**

Fairchild Electronics Semiconductor Division provides an evaluation board for verifying the system level performance of the RC5036. The evaluation board provides a guide as to what can be expected in performance with the supplied external components and PCB layout. Please call your local Sales Office or Fairchild Electronics Semiconductor Division at 408-822-2550 for an evaluation board.

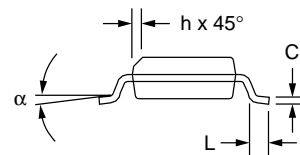
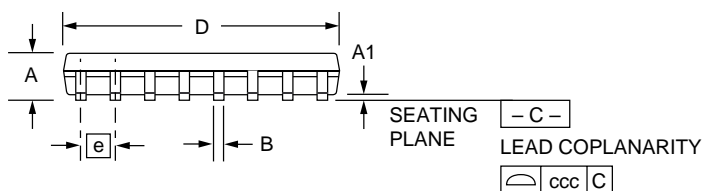
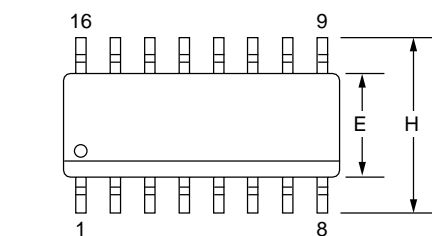
## Mechanical Dimensions

### 16-Lead SOIC Package

Symbol	Inches		Millimeters		Notes
	Min.	Max.	Min.	Max.	
A	.053	.069	1.35	1.75	
A1	.004	.010	0.10	0.25	
B	.013	.020	0.33	0.51	
C	.008	.010	0.19	0.25	5
D	.386	.394	9.80	10.00	2
E	.150	.158	3.81	4.00	2
e	.050 BSC		1.27 BSC		
H	.228	.244	5.80	6.20	
h	.010	.020	0.25	0.50	
L	.016	.050	0.40	1.27	3
N	16		16		6
$\alpha$	0°	8°	0°	8°	
ccc	—	.004	—	0.10	

**Notes:**

1. Dimensioning and tolerancing per ANSI Y14.5M-1982.
2. "D" and "E" do not include mold flash. Mold flash or protrusions shall not exceed .010 inch (0.25mm).
3. "L" is the length of terminal for soldering to a substrate.
4. Terminal numbers are shown for reference only.
5. "C" dimension does not include solder finish thickness.
6. Symbol "N" is the maximum number of terminals.



## Ordering Information

Product Number	Package
RC5036M	16 pin SOIC

### LIFE SUPPORT POLICY

FAIRCHILD'S PRODUCTS ARE NOT AUTHORIZED FOR USE AS CRITICAL COMPONENTS IN LIFE SUPPORT DEVICES OR SYSTEMS WITHOUT THE EXPRESS WRITTEN APPROVAL OF THE PRESIDENT OF FAIRCHILD SEMICONDUCTOR CORPORATION. As used herein:

1. Life support devices or systems are devices or systems which, (a) are intended for surgical implant into the body, or (b) support or sustain life, and (c) whose failure to perform when properly used in accordance with instructions for use provided in the labeling, can be reasonably expected to result in a significant injury of the user.
2. A critical component in any component of a life support device or system whose failure to perform can be reasonably expected to cause the failure of the life support device or system, or to affect its safety or effectiveness.



## TRADEMARKS

The following are registered and unregistered trademarks Fairchild Semiconductor owns or is authorized to use and is not intended to be an exhaustive list of all such trademarks.

ACEx™  
CoolFET™  
CROSSVOLT™  
E<sup>2</sup>CMOS™  
FACT™  
FACT Quiet Series™  
FAST®  
FASTr™  
GTO™  
HiSeC™

ISOPLANAR™  
MICROWIRE™  
POP™  
PowerTrench®  
QFET™  
QS™  
Quiet Series™  
SuperSOT™-3  
SuperSOT™-6  
SuperSOT™-8

SyncFET™  
TinyLogic™  
UHC™  
VCX™

## DISCLAIMER

FAIRCHILD SEMICONDUCTOR RESERVES THE RIGHT TO MAKE CHANGES WITHOUT FURTHER NOTICE TO ANY PRODUCTS HEREIN TO IMPROVE RELIABILITY, FUNCTION OR DESIGN. FAIRCHILD DOES NOT ASSUME ANY LIABILITY ARISING OUT OF THE APPLICATION OR USE OF ANY PRODUCT OR CIRCUIT DESCRIBED HEREIN; NEITHER DOES IT CONVEY ANY LICENSE UNDER ITS PATENT RIGHTS, NOR THE RIGHTS OF OTHERS.

## LIFE SUPPORT POLICY

FAIRCHILD'S PRODUCTS ARE NOT AUTHORIZED FOR USE AS CRITICAL COMPONENTS IN LIFE SUPPORT DEVICES OR SYSTEMS WITHOUT THE EXPRESS WRITTEN APPROVAL OF FAIRCHILD SEMICONDUCTOR CORPORATION. As used herein:

1. Life support devices or systems are devices or systems which, (a) are intended for surgical implant into the body, or (b) support or sustain life, or (c) whose failure to perform when properly used in accordance with instructions for use provided in the labeling, can be reasonably expected to result in significant injury to the user.
2. A critical component is any component of a life support device or system whose failure to perform can be reasonably expected to cause the failure of the life support device or system, or to affect its safety or effectiveness.

## PRODUCT STATUS DEFINITIONS

### Definition of Terms

Datasheet Identification	Product Status	Definition
Advance Information	Formative or In Design	This datasheet contains the design specifications for product development. Specifications may change in any manner without notice.
Preliminary	First Production	This datasheet contains preliminary data, and supplementary data will be published at a later date. Fairchild Semiconductor reserves the right to make changes at any time without notice in order to improve design.
No Identification Needed	Full Production	This datasheet contains final specifications. Fairchild Semiconductor reserves the right to make changes at any time without notice in order to improve design.
Obsolete	Not In Production	This datasheet contains specifications on a product that has been discontinued by Fairchild semiconductor. The datasheet is printed for reference information only.