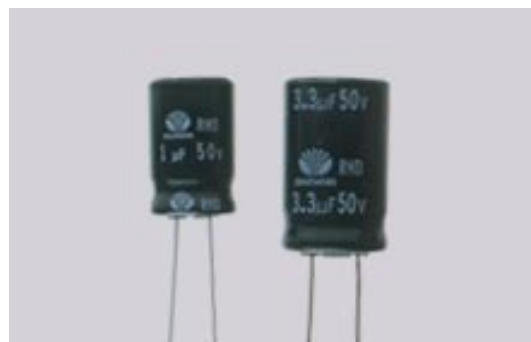


# RHD SERIES

## ALUMINUM ELECTROLYTIC CAPACITORS Horizontal Deflection Correction, Radial Leads

### Features

- For horizontal deflection correction circuit
- Large permissible ripple current
- High and stable quality
- Load life of 1000 hours at 85°C



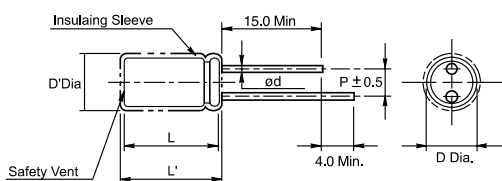
### Specifications

Item	Performance Characteristics
Operating temperature range	-25°C ~ +85°C
Rated working voltage range	25V, 50V
Nominal capacitance range	1.0µF ~ 10µF, ±20% (at 20°C, 120Hz)
D.C Leakage current (at 20°C)	The following specifications shall be satisfied when the rated voltage is applied for the required time. $I \leq 100\mu A (5 \text{ min})$
Tan $\delta$ (max., at 20°C, 120Hz)	0.05Max
Load life	After applying DC12V on which the specified allowable ripple current is superimposed for 1000 hours at 70°C and then being stabilized at +20°C, capacitors shall meet following limits.
Shelf life	Capacitance change: Within ±15% of initial measured value Tan: ≤ 200% of initial specified value Leakage current: ≤ Initial specified value After storage for 500 hours at +85°C with no voltage applied and then being stabilized at +20°C, capacitors shall meet following limits. Capacitance change: Within ±15% of initial measured value

### Case sizes and Dimensions

### Dimensions & Maximum permissible ripple current [Ap-p at 70°C, 15.75KHz]

ø D x



#### Standard lead style

øD	13.0	16.0	18.0
p	5.0	7.5	
ød			

D' = [D + 0.5] Max.

L' = [L + 1.5] Max.

Cap(µF)	W.V	25		50	
		SIZE	I <sub>R</sub>	SIZE	I <sub>R</sub>
1.0		13 x 20	1.8	13 x 20	1.8
1.5		13 x 20	2.4	13 x 20	2.4
2.2		13 x 25	3.3	13 x 25	3.3
3.3		16 x 25	4.5	16 x 25	4.5
4.7		16 x 31.5	6.0	16 x	6.0
5.6		16 x 35.5	7.5	31.5	7.5
6.8		16 x 35.5	8.0	16 x	8.0
8.2		18 x 35.5	9.0	35.5	9.0
10		18 x 40	10.	16 x	10.