

SURGE PROTECTORS



Fax Back Document #1417

• RAM-LAS Series

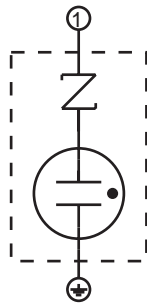
Specifically designed for AC power line applications which may require European (CE) Mark.

Applied as indirect lightning surge protection in the power line of equipment, these models utilize micro-gap gas discharge technology, and a series connected MOV between line and ground, thus demonstrating extremely fast response characteristics in dark ambient conditions without the use of radioactive isotopes.

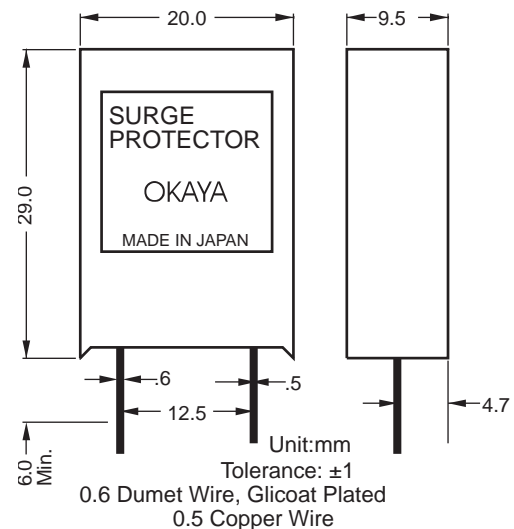
It may also be used within electronic circuits to protect from destructive impulse current while still permitting "Voltage Withstand Testing" without having to remove the RAM-LA.

FEATURES:

- Fast response time
- This Surge Absorber is Bi-polar and will fail open if surge withstand capability is exceeded.
- Inter-terminal capacitance is extremely small, resulting in little influence on electronic circuits.
- High Insulation Resistance ($1 \times 10^9 \Omega \text{min.}$)
- Excellent Surge withstand capability (300 times at 100Amp, $8 \times 20 \mu\text{s.}$)



Safety Agency : Standard		File No.
UL	: UL 1449	E143446
UL	: UL1414	E47474
CSA	: C 22.2 No. 0,8	LR105073-2
TÜV	: IEC 384-14 1993	J9650111



SURGE ABSORBERS

ELECTRICAL SPECIFICATIONS

Safety Standard	Model No.	DC Breakdown Voltage $R=1M \Omega$, 100-500 V/Sec.	Insulation Resistance	Cap.	Peak Surge Current	Repeat Surge Times	Voltage Withstand Test	Max Line Voltage
UL	RAM-242LAS	2400 \pm 20%	1000 M Ω (DC 500V)	2 pF (max)	2000 Amp 3 times ($8 \times 20 \mu\text{sec}$)	100 Amp 300 times ($8 \times 20 \mu\text{sec}$)	AC 1250V 3 sec.	125Vrms
UL	RAM-302LAS	3000 \pm 20%					AC 1500V 1 min.	250Vrms
CSA	RAM-362LAS	3600 \pm 20%					AC 1800V 3 sec.	250Vrms