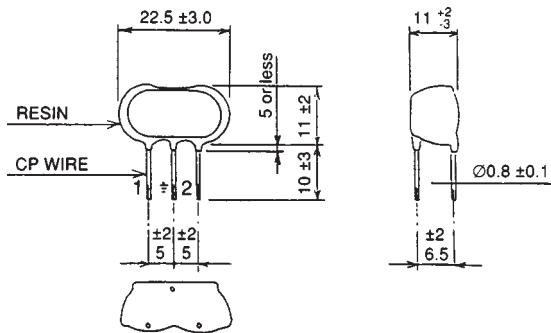


Fax Back Document #1406

• RAV-LDEZ:

Designed specifically for use in AC power line applications. This model uses specially treated discharge electrodes for greatly enhanced noise immunity test and surge life making it optimum for the protection of single-phase power supply circuits.

• RAV-401LDEZ



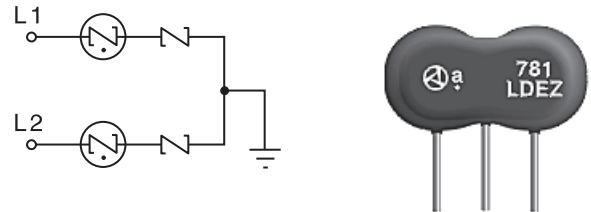
• Use of Surge Protectors:

Okaya Surge protectors in combination with Okaya XYE series filter capacitors offer superb lightning surge suppression. Capacitor XYE-104332 will equalize excessive currents aiding the surge protector in absorbing the lightning surge. This parts combination is equally effective against severe noise.

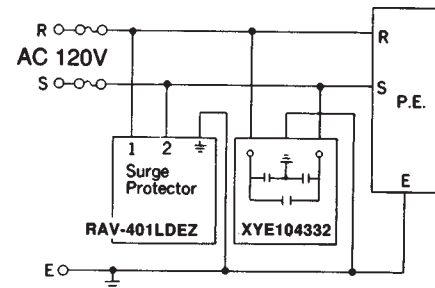
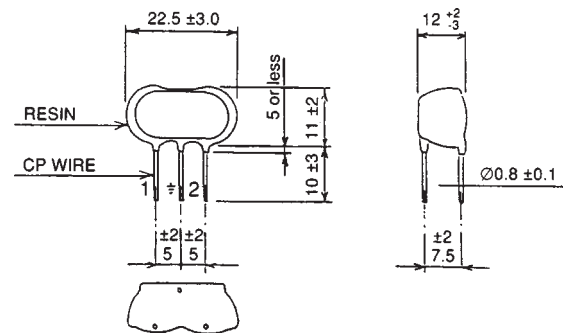
• Noise Margin Test:

Noise margin testing usually requires the physical disconnection of lightning surge protection components. Such disconnection often is difficult and time consuming. Okaya's RAV-LDEZ series allow noise margin testing without any such disconnection as they are designed to withstand the rigors of testing.

Safety Agency : Standard	File No.
UL : UL-1449	E143446
CSA : C22.2 No. 8 M1986	LR105073



• RAV-781LDEZ



Model Number	RAV-401LDEZ	RAV-781LDEZ
Power source	Single-phase 135VAC 50//60Hz	Single-phase 270VAC 50//60Hz
Impulse width	1us	1us
Impulse voltage (+,-)	2kV	2kV
Applied period (Hours)	1.5Hrs Max.	1.5Hrs Max.

Impulse Test Condition

ELECTRICAL SPECIFICATIONS

Model No.	Clamp* Voltage V1.0 \pm 10%	Peak Surge Current 8/20 μ s (A)	Peak Surge Voltage 1.2/50 μ s (V)	Response Time (ns)	Capacitance (PF) Max.)	Max. Line Voltage (Vrms)	Weight (g)	Operating Temp. Range (C)
RAV-401LDEZ	403	1000	12K	50	50	145	10	-20° to +70°
RAV-781LDEZ	783					300		

* Equivalent Varistor Voltage @ 1mA