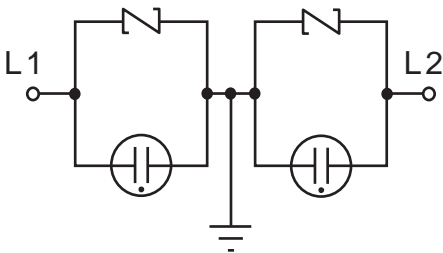
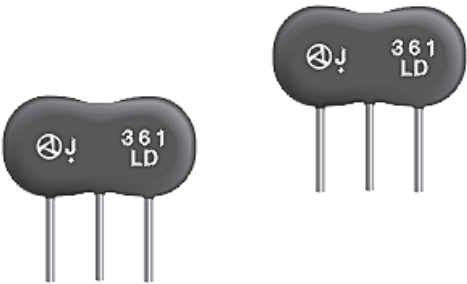


• RAV-LD (For protecting network lines)

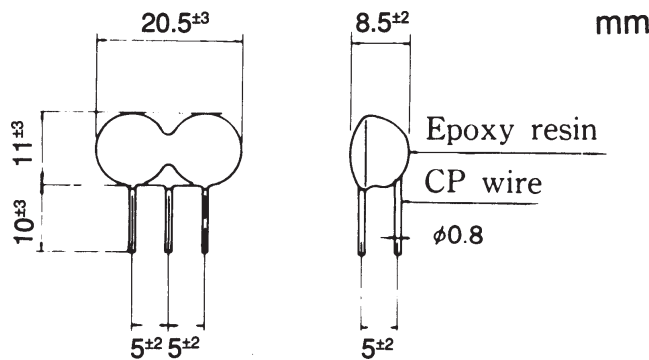
The RAV-LD series are designed as surge absorbers for protection of telecommunication lines from indirect lightning surges. They demonstrate extremely fast response time and positive surge absorption operation compared to gas arresters.



Equivalent Circuit Diagram



RAV-361LD



ELECTRICAL SPECIFICATIONS

Model No.	Clamp Voltage* V1.0 ± 10%	Peak Surge Current 8/20µs (A)	Peak Surge Voltage 1.2/50 µs (V)	Response Time (ns)	Capacitance (PF) Max.	Operating Temp Range (C)
RAV-221LD	220	2400	12K	50	90	-20° TO + 70°
RAV-361LD	360				30	
RAV-401LD	400				30	
RAV-621LD	620				40	

* Equivalent Varistor Voltage @ 1MA