

SURFACE MOUNT-CERAMIC ATTENUATOR, PIN DIODE

800-2000 MHz

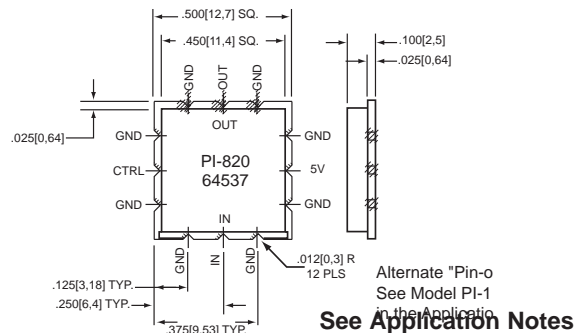
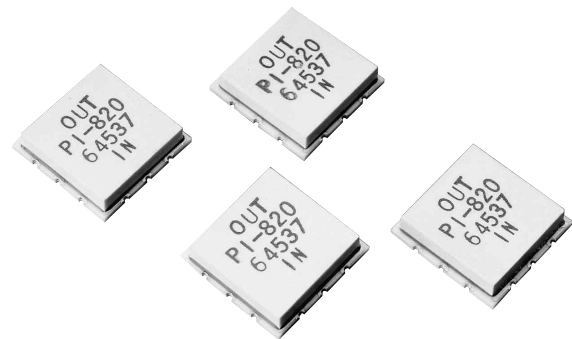
MODEL PI-820

FEATURES

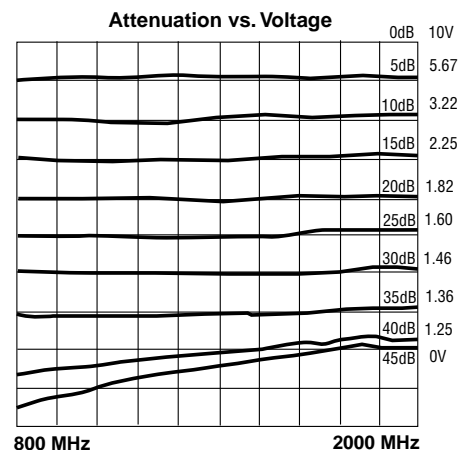
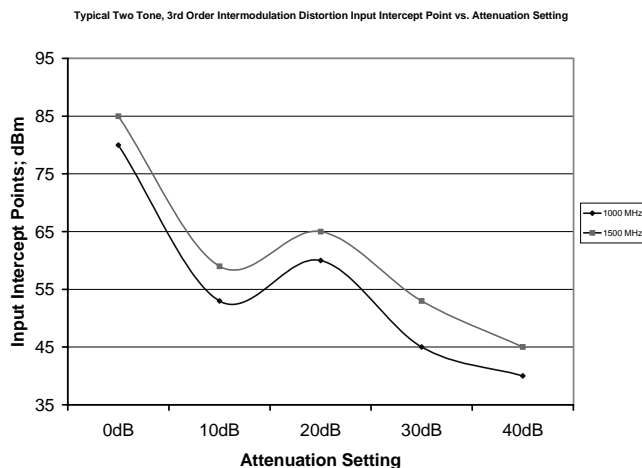
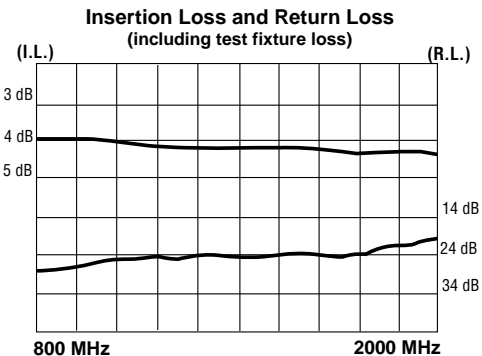
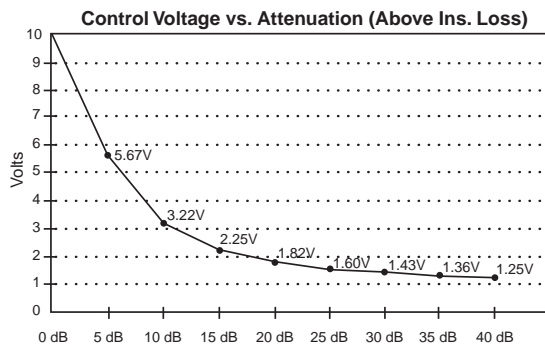
- PCS Frequency Coverage: 800-2000 MHz
- Balanced 4 Diode π Configuration Increases Attenuation and Doubles Upper Frequency Limit
- Low VSWR and Flat Attenuation Characteristics
- Silicon PIN Diodes on Ceramic Offer Improved Insertion Loss Compared to GaAs
- Superior Intermodulation Distortion Characteristics
- Inherently Compensates for VSWR and Temperature Variations
- Rugged Alumina "Surfpac" Package Ideal for Surface Mount Applications
- Can be Optimized Over Lower Frequency Ranges by Changing Capacitor Values
- BEST CHOICE for PCS and GSM Applications

ELECTRICAL SPECIFICATIONS

Frequency Range:	800 - 2000 MHz
Insertion Loss:	3.5 dB typical
Attenuation Range:	0 - 40 dB typical
VSWR:	1.5:1 maximum
DC Supply:	+5V DC at 20 mA maximum
Control Voltage:	0V / 10V at 15 mA maximum for Attenuation/Insertion Loss
1 dB Compression Point:	+27 dBm
Attenuation Accuracy:	± 0.75 dB to 20 dB ± 1.50 dB to 30 dB
Temperature:	-10 to +80°C. See application note for recommended maximum reflow soldering temperatures.



See Application Notes



KEY: Inches[Millimeters] .XX ±.03 .XXX ±.010 [.X ±0.8 .XX ±0.25]



KDI TRIANGLE CORPORATION
An MCE Company

60 South Jefferson Road, Whippany, NJ 07981
Tel: 973-887-8100 • Fax: 973-884-0445
E-Mail: kdisales@aol.com
See us on the web @ www.kditriangle.com