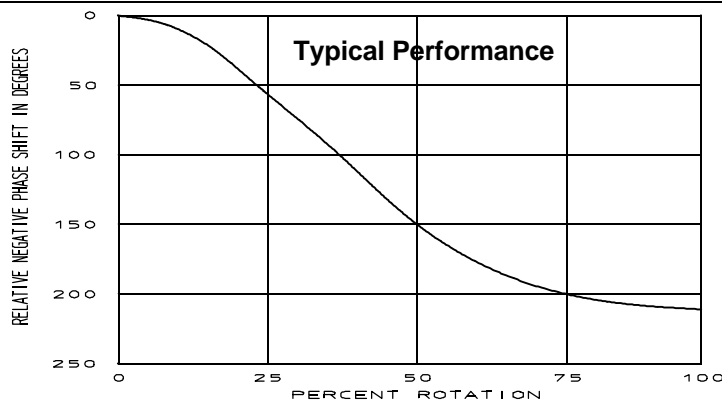
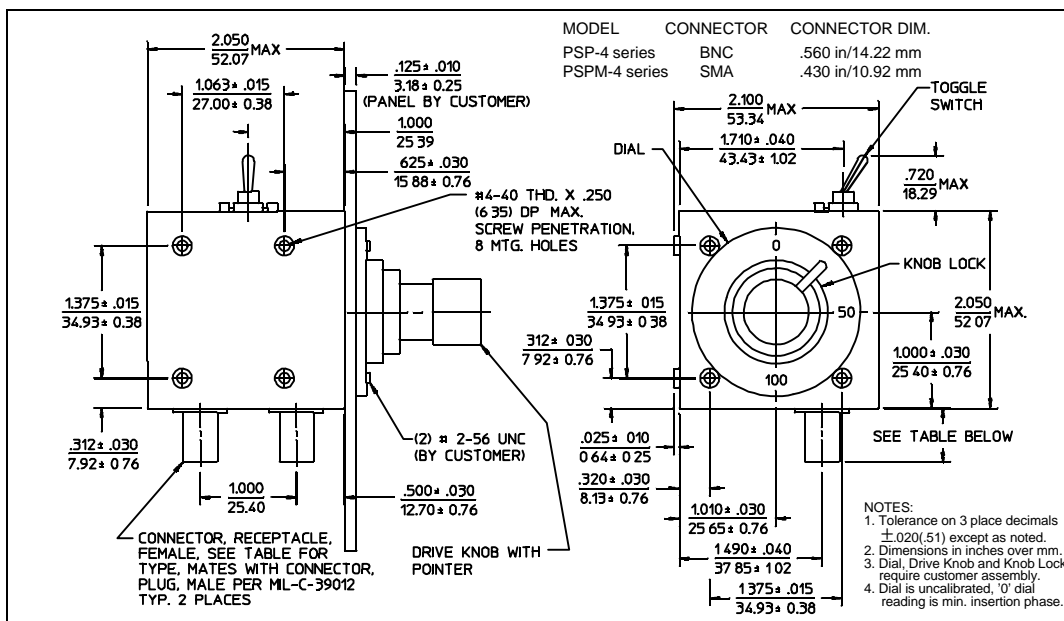
**PRINCIPAL SPECIFICATIONS**

Center Frequency, f_0 , MHz	BNC Model Number	SMA Model Number	Usable Bandwidth	Insertion Loss, dB, Max.	VSWR Max. (In/Out)	CW Power, W, Max.
10 to 100	PSP-4-***B	PSPM-4-***B	$f_0 \pm 5\%$	1.75	1.75:1	1
100 to 500				2.25	2.0:1	

For complete Model Number replace *** with desired Center Frequency, f_0 in MHz.

**GENERAL SPECIFICATIONS**

Phase Shift Range: 0° to 360° @ f_0
 Impedance: 50 Ω nom.
 Manual Drive: Knob/Lock for 180° continuous plus 0°/180° Toggle Switch
 Rotation: Half-Turn nominal for total phase range
 Direction: Clockwise increases insertion phase
 Weight, nominal: 6.5 oz (185 g)
 Operating Temp.: -55° to +85°C

**General Notes:**

1. The PSP and PSPM series of panel mountable phase shifters use lumped element quadrature hybrids together with tunable pair of LC networks to generate variable phase shifts up to 180°. An additional 180° of phase shift is available by activating the included switch.
2. The continuous phase shift control is provided with a lock to prevent inadvertently changing the setting.
3. If continuous 0° to 360° phase shift is required, Merrimac's PS-5 series should be considered.

15Feb96