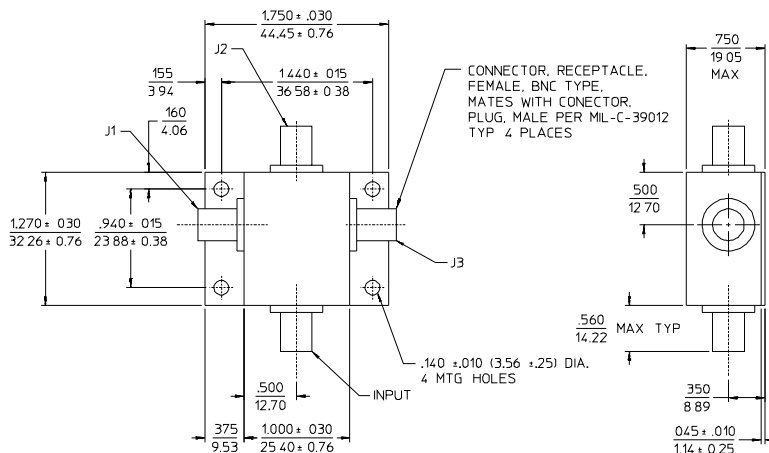


PRINCIPAL SPECIFICATIONS

Model Number	Frequency Range, MHz	Frequency Performance, MHz	Isolation, dB		Insertion Loss, dB		Phase Balance		Amplitude Bal., dB		VSWR (In/Output)	
			Min.	Typ.	Max.	Typ.	Max.	Typ.	Max.	Typ.	Max.	Typ.
PD-30-150	1 - 300	2 - 200	27	33	1.0	0.6	3°	1°	0.3	0.2	1.3:1	1.2:1
		1 - 300	20	25	1.2	0.8	4°	2°	0.4	0.2	1.5:1	1.3:1

Package Outline



NOTES: 1. Tolerance on 3 place decimals $\pm .020(.51)$ except as noted.
2. Dimensions in inches over millimeters.

General Notes:

1. The PD-30-150 3-way Power Divider/Combiner covers 1 to 300 MHz using a lumped element design for a broad bandwidth and high output port isolation.
2. This unit complies with MIL-P-23971 and can be screened for compliance with additional specifications for military and space applications requiring the highest reliability.

16Feb96

GENERAL SPECIFICATIONS

Coupling:	- 4.8 dB nom.
Impedance:	50 Ω nom.
Internal Load Dissipation:	250 mW max.
CW Input Power:	1 Watt max. (When used as divider with 1.2:1 VSWR _{out})
Weight, nominal:	2.5 oz. (71 g)
BNC Female Connectors:	MIL-C-39012
Operating Temperature:	- 55° to +85°C

Typical Performance

