

HIGH POWER COAXIAL TYPE N & SMA TERMINATIONS

DC-12.4 GHz CONDUCTION (HEAT SINK) COOLED

SERIES PCX

GENERAL INFORMATION:

The PCX Series High Power Terminations are designed to dissipate RF power when mounted to a heat sink or chill plate. Power levels from 15 to 150 watts in 50 ohm impedance are available in units with type SMA or Type N connectors. High stability thin film resistive elements on beryllium oxide substrates are used to insure stable VSWR performance over temperature and environmental conditions.

MATERIALS:

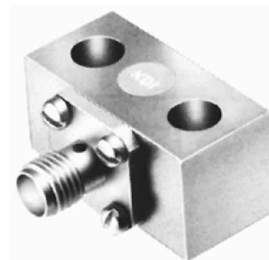
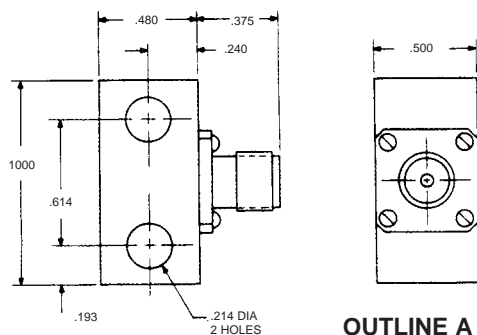
Connectors:	Stainless Steel Passivated (SMA) Nickel Plated Brass (Type N)
Housing:	Nickel Plated Copper

PERFORMANCE SPECIFICATIONS:

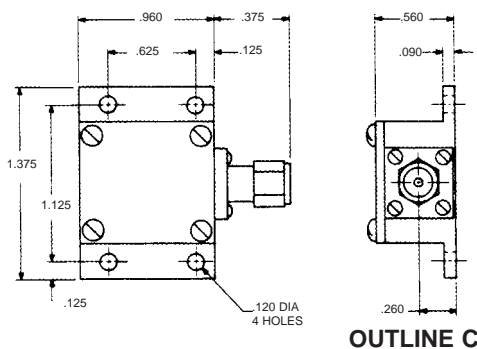
Part Number	Input Power (Watts) (Note 2)	Frequency Range (Note 3)	Connector Type	VSWR (Max.)	Outline
PCX 050-F-15	15	DC-12.4 GHz	SMA FEMALE	DC-4 GHz—1.15:1 4-8 GHz—1.20:1 8-12.4 GHz—1.30:1	A
PCX 050-F-50	50	DC-6 GHz	SMA FEMALE	DC-3 GHz—1.25:1 3-6 GHz—1.35:1	C
PCX 050-F-150	150	DC-2 GHz	SMA FEMALE	DC-1 GHz—1.15:1	D
PCX 100-F-150	150	DC-2 GHz	N FEMALE	1-2 GHz—1.40:1	

NOTES:

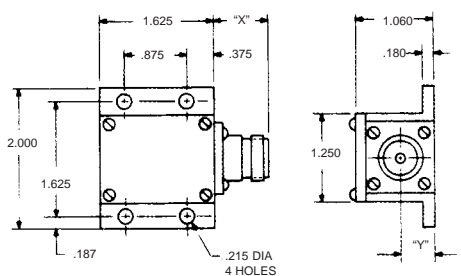
1. All models meet the applicable portions of MIL-R-55342 and MIL-R-10509
2. Operating Temperature: 15 watt models; 100°C max. case temperature. All other models; 85°C max. case temperature.
3. Narrowband (8%) performance up to 18 GHz available in special units. Contact factory.



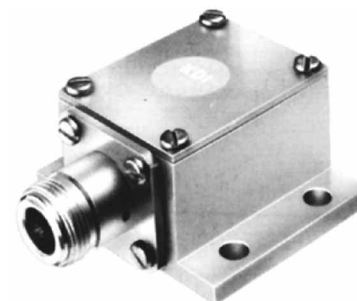
**SMA Connector
15 WATTS**



**SMA Connector
50 WATTS**



OUTLINE D



**SMA or N Connector
150 WATTS**

(Shown with TYPE N)

Note: Unless otherwise specified, all tolerances are ± 0.010 inches.

for custom products & applications contact:

KDI / TRIANGLE
CORPORATION
an MCE Company
Tel: 201-887-8100
Fax: 201-884-0445
http://kdi-triangle.com

for overnight stock shipment call:

**Richardson
Electronics, Ltd.** 1-800-737-6937