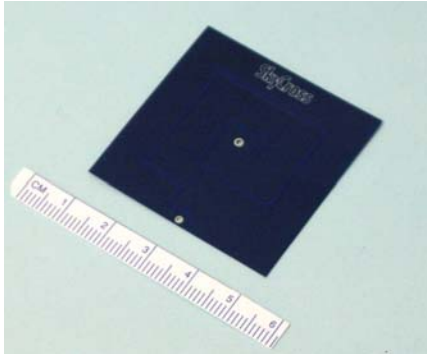


## 800 MHz Antenna for Embedded SMR Wireless Applications



### Features

- *SMR Band*
- *Peak Gain + 1.5 dBi at 830 MHz*
- *Low Profile for Embedded Applications*
- *Conforms to Radio Case Constraints*
- *Low Cost*

This 800 MHz antenna is designed using SkyCross' patented antenna technology, providing superior efficiency and gain directivity in a small package. This antenna is the best performance solution for developers implementing an embedded antenna in a SMR device.

### Electrical Specifications

Frequency Range	806 — 866 MHz
Gain	1.7 dBi at 840 MHz
VSWR	2.0:1
Polarization	Linear
Pattern	Omni-directional
Feed Impedance	50 Ohms unbalanced

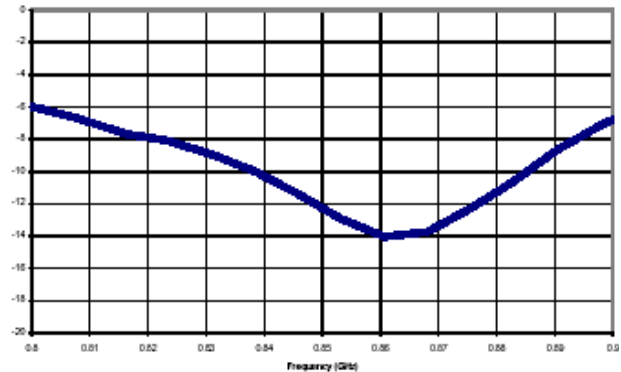
\*antenna results measured mounted 7 mm above ground plane

### Mechanical Specifications

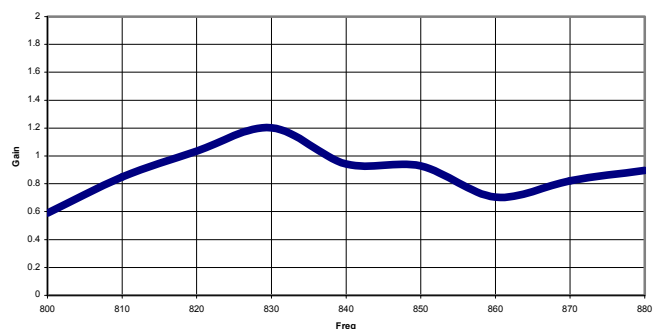
Size*	1.7L x 1.7W x 0.025H in 43.2L x 43.2 W x 0.56 H mm
Weight*	14.2g

\*size and weight does not include ground plane or connector

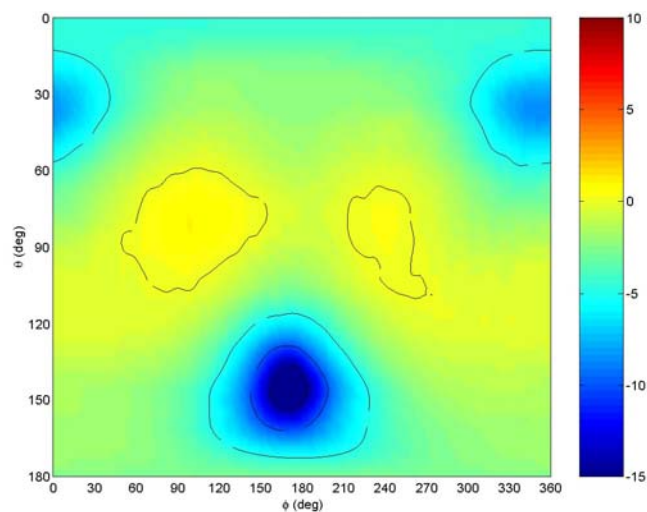
### Typical Return Loss



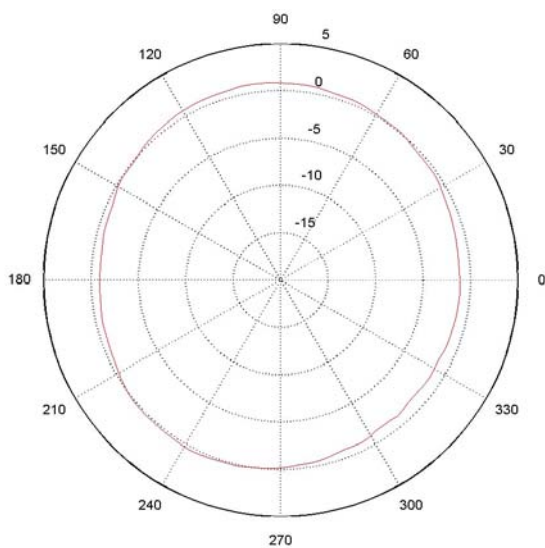
### Swept Gain



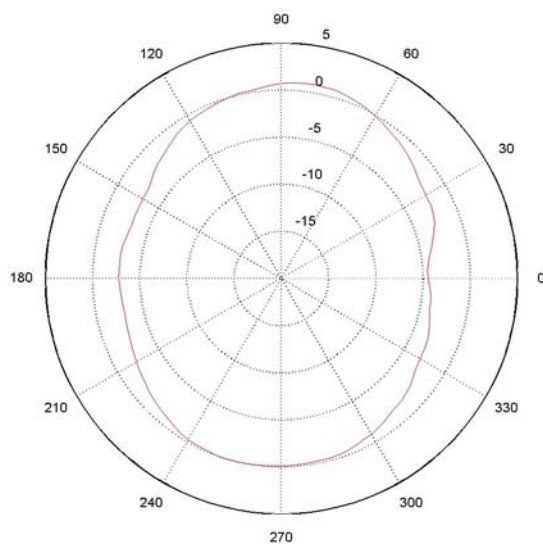
## Spherical Gain Contour Map



## Typical Gain Pattern



Phi = 90 degrees



Theta = 90 degrees

© 2001 SkyCross, Inc. SkyCross is a trademark of SkyCross, Inc. All rights reserved. Protected by one or more US Patents, including No. 5,790,080. Additional US and Foreign patents pending. Specification subject to change without notice.

For information regarding SkyCross Inc. and its products, see website at [www.skycross.com](http://www.skycross.com), email [info@skycross.com](mailto:info@skycross.com) or call 321-308-6600