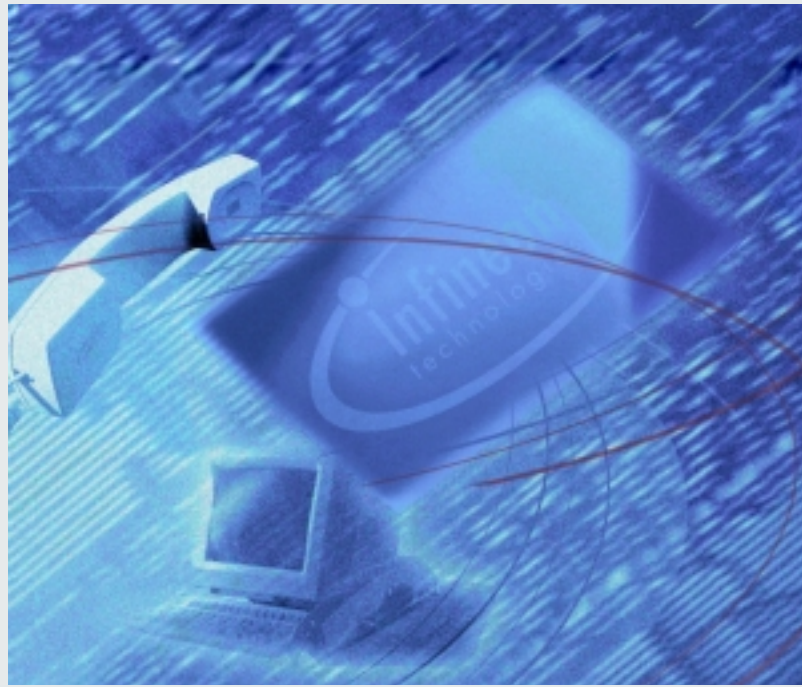


# IEC-Q TE

PSB/F 21911 V5.2

ISDN Echo Cancellation Circuit  
TE for 2B1Q linecode

The IEC-Q TE PSB/F 21911 is a specific derivative of the IEC-Q PEB 2091 for terminal and small PBX applications. It features all necessary functions required for NTs and terminal applications like PC add-on cards and terminal adapters.



## ISDN/IDSL

### Potential Applications

- Terminal- and TA-Applications
- Network terminators
- PBXs

### Features

- Single chip solution featuring full duplex data transmission and reception over two-wire metallic subscriber loops providing ISDN basic rate access or IDSL access at 144 kbit/s
- Fully compliant to:
  - ANSI T1.601 (1998)
  - ETSI TS 102 080 (1998)
  - Recommendation ITU-T G.961
- 2B1Q line code at 80 kHz symbol rate

- Fully compatible to NT modes and TE mode of the IEC-Q PEB 2091 V5.x
- Equipped with
  - $\mu$ C-Interface
  - IOM<sup>®</sup>-2-interface
- Extended temperature range available
- P-LCC-44 or P-TQFP-64 package
- Part of the Infineon Technologies system solution

### In $\mu$ P mode

- Parallel or serial microprocessor interface and watchdog
- $\mu$ P access to B-channels, D-channel and intercommunication channels

- $\mu$ P access to IOM<sup>®</sup>-2 Monitor-channels and C/I-channels
- Adjustable micro controller clock source between 0.96 MHz and 7.68 MHz
- Selection between Bit clock (BCL) and Data clock (DCL)
- Supports synchronization of base-stations in cordless applications (e.g. RITL)
- D-channel arbitration

### In all modes

- Single 5 V power supply
- Low power CMOS technology with power down mode

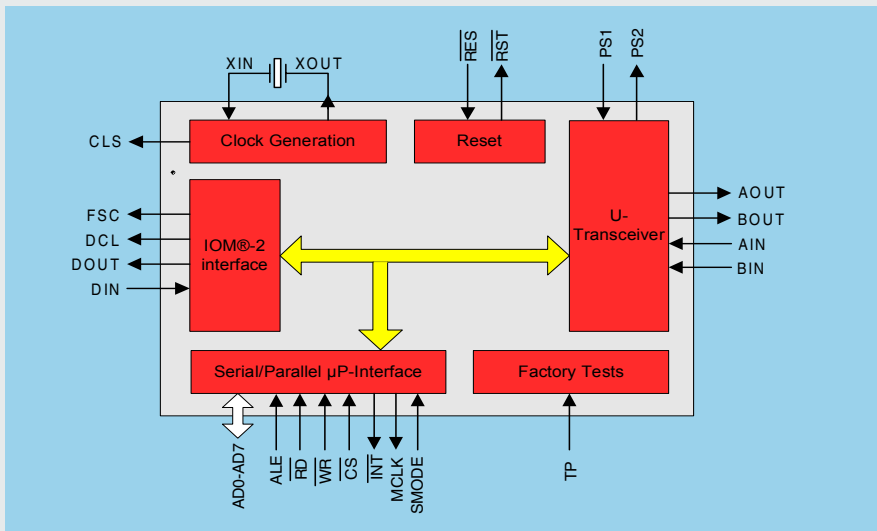
## ISDN/IDSL

Echo Cancelling Circuit TE  
for 2B1Q linecode



Never stop thinking.

## Block Diagram



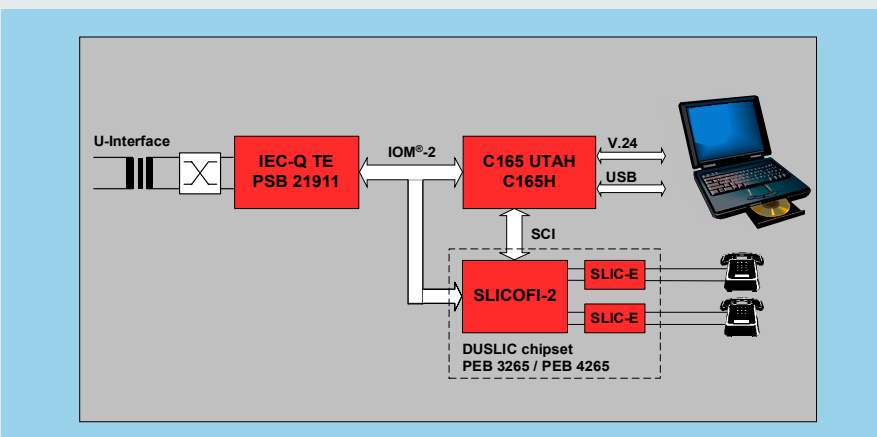
## Ordering Code

Type	Package	Availability
PSB 21911 N V5.2	P-LCC-44	Production
PSB 21911 F V5.2	P-TQFP-64	Production
PSF 21911 F V5.2	P-TQFP-64	Production

## Documentation

Name	Status
Data Sheet PSB/F 21911 V5.2	11.97
Delta Sheet PSB/F 21911 V5.2	06.97
Application Note "Providing Clocks in Deactivated State"	09.97

## ISDN/IDSL Modem with optional POTS Interface



How to reach us:  
<http://www.infineon.com>

Published by  
 Infineon Technologies AG,  
 Bereich Kommunikation,  
 St.-Martin-Strasse 53,  
 D-81541 München

© Infineon Technologies AG 2000. All Rights Reserved.

### Attention please!

The information herein is given to describe certain components and shall not be considered as warranted characteristics.

Terms of delivery and rights to technical change reserved.

We hereby disclaim any and all warranties, including but not limited to warranties of non-infringement, regarding circuits, descriptions and charts stated herein.

Infineon Technologies is an approved CECC manufacturer.

### Information

For further information on technology, delivery terms and conditions and prices please contact your nearest Infineon Technologies Office in Germany or our Infineon Technologies Representatives worldwide.

### Warnings

Due to technical requirements components may contain dangerous substances. For information on the types in question please contact your nearest Infineon Technologies Office.

Infineon Technologies Components may only be used in life-support devices or systems with the express written approval of Infineon Technologies, if a failure of such components can reasonably be expected to cause the failure of that life-support device or system, or to affect the safety or effectiveness of that device or system. Life support devices or systems are intended to be implanted in the human body, or to support and/or maintain and sustain and/or protect human life. If they fail, it is reasonable to assume that the health of the user or other persons may be endangered.