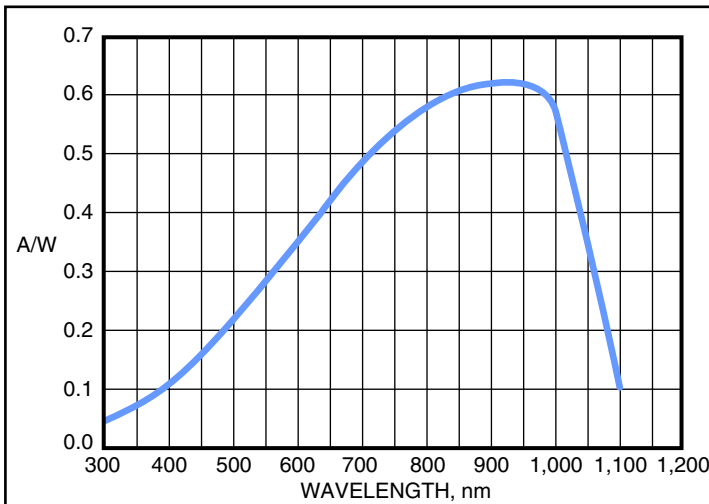
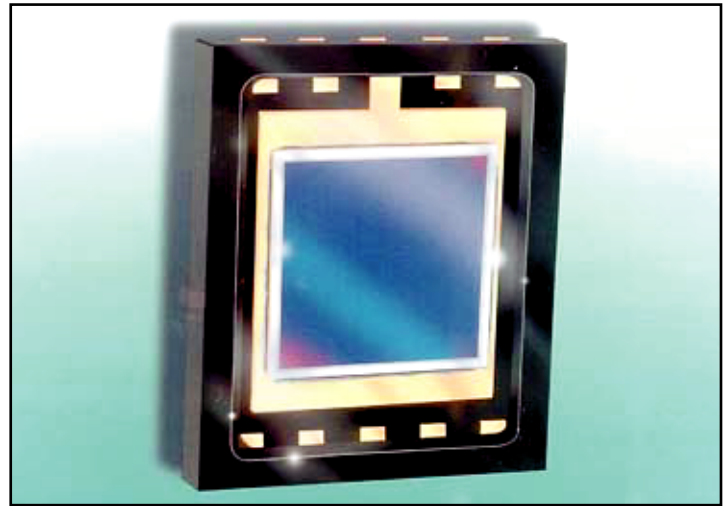


DATA SHEET

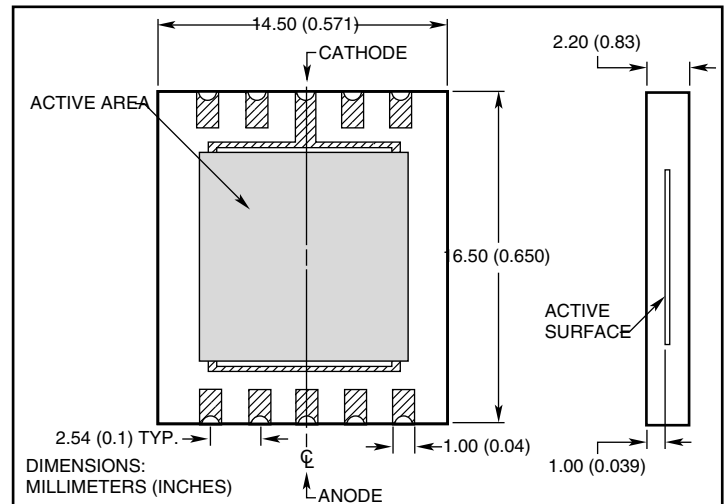
PSS100-7-SM

LARGE AREA SILICON PHOTODIODE PSS100-7-SM

PSS100-7-SM is a silicon photodiode with an active area of 100 mm², in a surface mounting package. The part has a low capacitance for its size measuring 12 pF at 80 volts bias. The part is designed to be re-flow soldered to PC boards. Conductive epoxy may also be used for mounting. The part is protected with durable, clear, non-darkening potting compound.



SPECTRAL RESPONSE



OUTLINE DIMENSIONS

PHOTODIODE CHARACTERISTICS PER SEGMENT

PART NO.	ACTIVE AREA mm ²	ACTIVE AREA (size) mm	DARK CURRENT nA @ 12V		CAPACITANCE* PF @		RISE TIME ns @ 850 nm	NEP W/H ^{1/2} OV @ 663 nm
			TYP	MAX	0V	12V		
PSS100-7-SM	100	10 X 10	0.5	5.0	240	80*	55 @ 12 V	6* 10 ⁻¹⁴

ABSOLUTE MAXIMUM RATINGS

DC REVERSE VOLTAGE	PEAK DC CURRENT	STORAGE TEMPERATURE	OPERATING TEMPERATURE	SOLDERING TEMPERATURE
80	10 mA	-10°C to +120°C	-40°C to 105°C	240° for 10 sec.