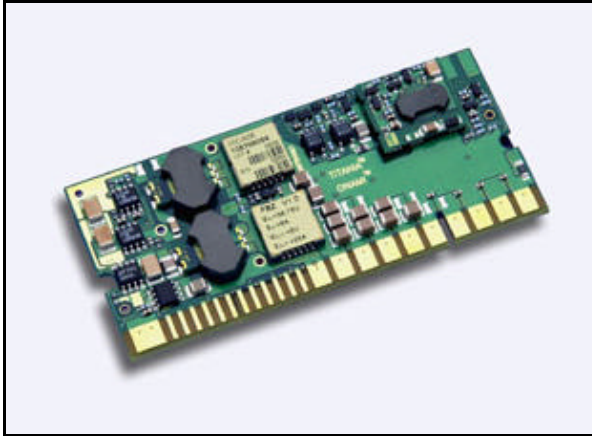




Titania™ Power Modules

Onami™ 5V Power Modules; dc-dc Converters: 36 Vdc to 75 Vdc Input; 5 Vdc Output; 25 A



The Onami 5V Power Module offers very high reliability, high efficiency, and provides precise voltage and fast transient response in the industry's smallest footprint.

Applications

- Communications equipment
- Computer equipment
- Distributed power architectures

Description

The Onami 5V Power Modules are designed to meet the precise voltage and fast transient requirements of today's high-performance micro processors, memory boards, and system-level applications in distributed power architectures requiring isolated power. Advanced circuit techniques, high-frequency switching, custom passive and active components, and very high-density, surface-mount packaging technology deliver high-quality, ultra compact, isolated dc-dc conversion.

* UL is a registered trademark of Underwriters Laboratories, Inc.

† CSA is a registered trademark of Canadian Standards Assn.

‡ VDE is a trademark of Verband Deutscher Elektrotechniker e.V.

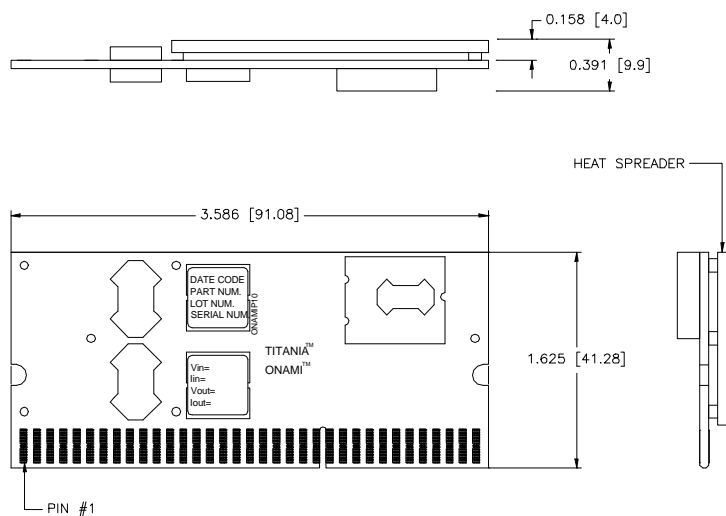
§ This product is intended for integration into end-use equipment. All the required procedures for CE marking of end-use equipment should be followed. (The CE mark is placed on selected products.)

Features

- Small size: ideal for minimizing motherboard area in multiprocessor applications
- Dimensions: 91.08 mm x 41.28 mm x 9.9 mm (3.586 in. x 1.625 in. x 0.39 in.)
- High reliability: 500 FITs/2 million hour MTBF
- High efficiency: 88% typical @ 5 V, 25 A
- Transient response: 0 A to 25 A (up to 2.5 A/μs)
- No external bulk output capacitors required for transient response
- Parallelable, with true current sharing during load transient
- N + 1 redundancy
- No externally provided bias voltage needed
- Operation down to natural convection airflow
- No additional heat sinks required
- Isolated output (EN60950)
- Vertical plug-in to standard connector
- Voltage trim capability using a resistor
- Remote sense
- Power good, module present, output enable, module OK, overvoltage protection, and output-current sense signals
- On board solid-state switch to isolate module fault from input bus
- Output overvoltage, overcurrent, short-circuit, and thermal protection
- Externally set second overvoltage protection
- UL*1950 Recognized, CSA† C22.2 No. 950-95 Certified, VDE‡ 0805 (EN60950, IEC950) Licensed (in process/pending)
- CE mark meets 73/23/EEC and 93/68/EEC directives§
- Within FCC and CISPR class B radiated EMI limits

Outline Diagrams

Dimensions are in inches and (millimeters).

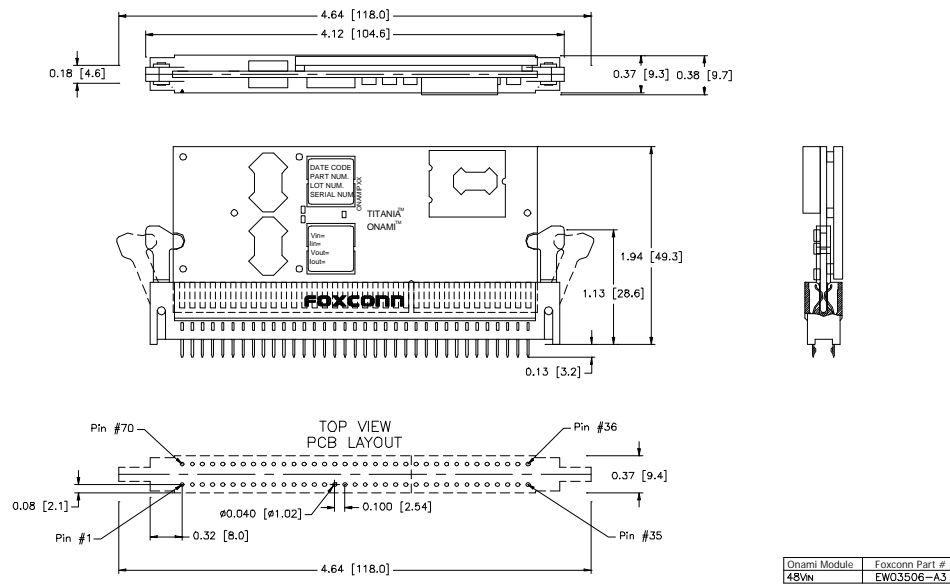


T-0050(F)

Figure 1. Onami Module with Heat Spreader (see the Module Pinout section for Pinout Information)

Outline Diagrams (continued)

Dimensions are in inches and (millimeters).



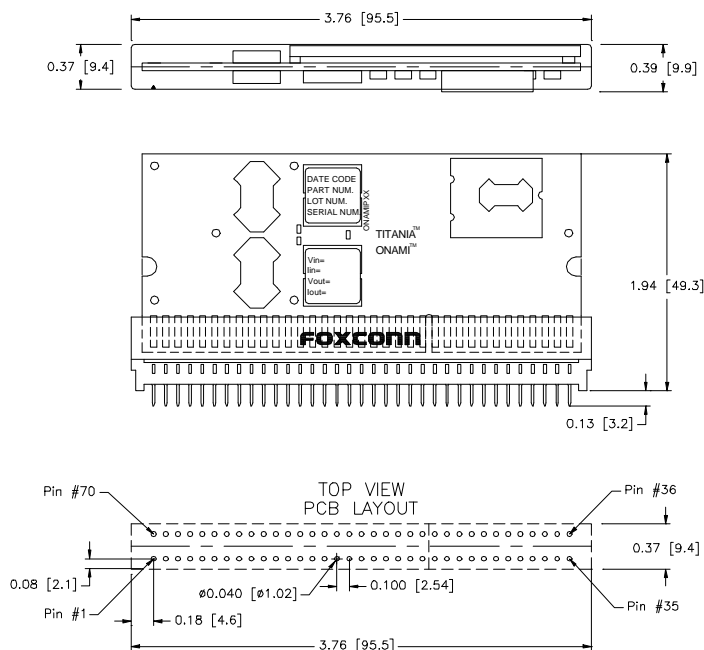
T-0051(F)

Figure 2. Onami Module with 70-Pin Latching Connector (Foxconn* Part No. EW03506-A3 or Equivalent); (See the Module Pinout section for Pinout Information)

* Foxconn is a trademark of Hon Hai Precision Component Manufacturing.

Outline Diagrams (continued)

Dimensions are in inches and (millimeters).



Onami Module	Foxconn Part #
48VIN	EW03506-B3

T-0052(F)

Figure 3. Onami Module with 70-Pin Nonlatching Connector (Foxconn Part No. EW03506-B3 or Equivalent); (See the Module Pinout section for Pinout Information)

Ordering Information

Call 1-87-SMALLPWR (1-877-625-5797) to order Onami Power Modules.

Table 1. Product Information

Product	Description	Comcode
Onami 36/75 V, 5 V, 25 A	48 V _I (36 V—75 V input range); 5 V _O ; 25 A I _O ; 2.5 A/ μ s transient response; 70-pin edge connector; bulk package	108768094

For additional information, contact your Lucent Technologies Account Manager or the following:

MICROPOWER DIVISION: Power Systems Group, Lucent Technologies Inc., 12301-II Riata Trace Parkway, Austin, TX 78727, USA
+1-87-SMALLPWR (+1-877-625-5797) (Outside U.S.A.: **+1-512-257-6899**) (product-related questions or technical assistance)

INTERNET: **<http://power.lucent.com/titania>**

E-MAIL: **titania@lucent.com** (product-related questions or technical assistance)

ASIA PACIFIC: Lucent Technologies Singapore Pte. Ltd., 750D Chai Chee Road #07-06, Chai Chee Industrial Park, Singapore 469004
Tel. (65) 240 8041, FAX (65) 240 8438

CHINA: Lucent Technologies (China) Co. Ltd., SCITECH Place No. 22 Jian Guo Man Wai Avenue, Beijing 100004, PRC
Tel. (86) 10-6522 5566 ext. 4187, FAX (86) 10-6512 3694

JAPAN: Lucent Technologies Japan Ltd., Mori Building No. 21, 4-33, Roppongi 1-chome, Minato-ku, Tokyo 106-8508, Japan
Tel. (81) 3 5561 5831, FAX (81) 3 5561 1616

LATIN AMERICA: Lucent Technologies Inc., Room 416, 2333 Ponce de Leon Blvd., Coral Gables, FL 33134, USA
Tel. +1-305-569-4722, FAX +1-305-569-3820

EUROPE: Technical Inquiries: GERMANY: **(49) 89 95086 0** (Munich), UNITED KINGDOM: **(44) 1344 865 900** (Ascot),
FRANCE: **(33) 1 40 83 68 00** (Paris), SWEDEN: **(46) 8 594 607 00** (Stockholm),
FINLAND: **(358) 9 3507670** (Helsinki), ITALY: **(39) 02 6608131** (Milan), SPAIN: **(34) 91 807 1441** (Madrid)

Lucent Technologies Inc. reserves the right to make changes to the product(s) or information contained herein without notice. No liability is assumed as a result of their use or application.
No rights under any patent accompany the sale of any such product(s) or information. Titania and Onami are trademarks of Lucent Technologies Inc.

