

product features

- MPEG audio and video (A/V) decoder
 - MPEG-2 (ISO 13818) and MPEG-1 (ISO 11172) bit streams, MP@ML
 - MPEG audio layers 1 & 2
- Integrated demux accepts transport, program, and system streams
- Decodes full CCIR601 resolution:
 - 720x480 @ 30 Hz (NTSC)
 - 720x576 @ 25 Hz (PAL)
- Integrated system host processor, 100-MHz MicroSPARC™ RISC core
- Integrated PAL/NTSC TV encoder (SCART compliant)
- Integrated conditional access (DVB-CA)
 - Reference EN 50221
- 16/256/64K color graphics overlay (GO) with zoom, 16 levels of transparency, and anti-flutter circuitry
- 6 video/graphics display surfaces (background, video border, video, GO, graphics highlight, cursor)
- Supports 32 PIDs
- Programmable position and size of full-motion video and GO
- Internal video scaling
- Supports teletext (TTX) and closed caption (CC) applications
- 16- and 18-bit PCM stereo audio outputs with interface to industry-standard DACs
- AC-3 bypass mode (IEC-958)
- Glueless interface to Motorola and Intel busses
- 208-pin PQFP package

OTI-8215

Integrated Digital Broadcast MPEG-2 Decoder

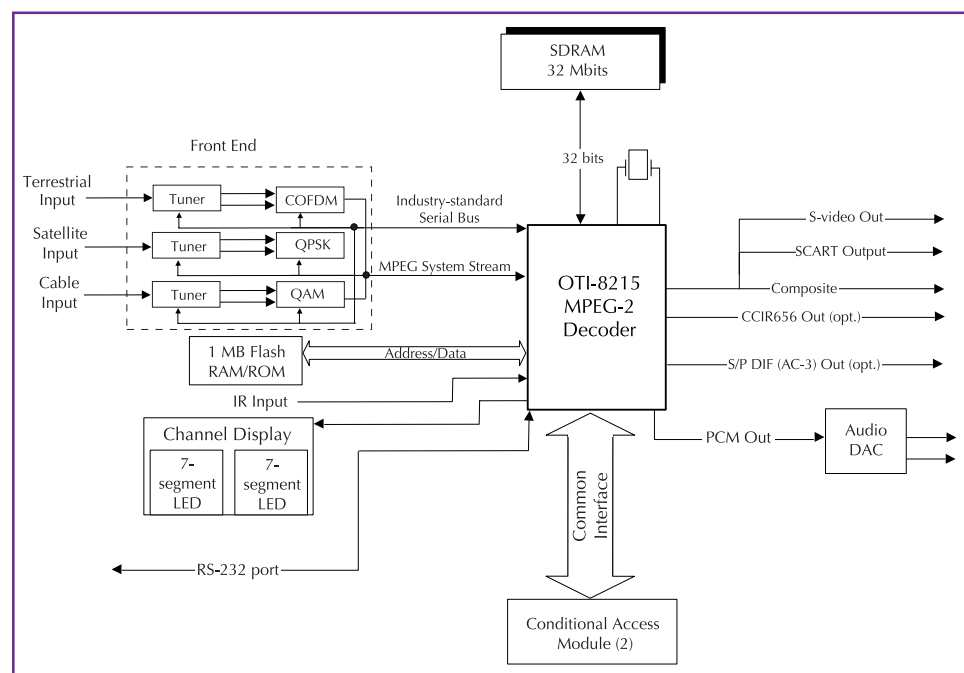
The OTI-8215 is a highly integrated, single-chip set-top box (STB)/DTV solution.

Description

The OTI-8215 is a highly integrated STB, system processor with real-time MPEG-2 A/V decoding aimed at digital cable, satellite and terrestrial television markets. It performs MPEG-2 A/V decompression as well as demultiplexing of MPEG system level compressed data streams. The OTI-8215 is fully compliant with ISO MPEG-2 bit streams and supports main profile/main level decoding (MP@ML).

Integration of Key Digital STB Features

The integration of a RISC processor, NTSC/PAL video encoders, PLLs and common interface electronics allow the OTI-8215 to cost-effectively address specific applications within consumer and entertainment communications markets (cable, satellite, terrestrial). The OTI-8215 integrates a 100-MHz MicroSPARC RISC core that manages all of the internal traffic routing on the OTI-8215 as well as decoding of picture headers and handling A/V synchronization. It may also function as the main processor in the STB or handle communications with an external host microprocessor. An on-board NTSC/PAL encoder (with SCART-compliant output) provides crisp, clear display of images on standard televisions. The OTI-8215 accepts and encodes TTX or CC data streams. A CCIR656 digital output is used to drive a secondary video encoder or digital television. Dual on-board DVB common interface ports allow the OTI-8215 to be used with external conditional access modules (CAMs) in applications requiring conditional access.



Entry Level Set-top Box

OTI-8215 Product Brief

Technical Overview & Specifications



Enhanced Video and Graphics Display

The OTI-8215 features six independent display surfaces, enabling a wide range of on-screen video and graphics combinations. The primary video surface displays decoded MPEG-2 video. This surface can be arbitrarily sized and scaled using a sophisticated, multi-tap filter algorithm. A background graphics plane enables simple color screens to be programmed. The GO display surface can support 16, 256 and 65,536 colors. In 16- and 256-color modes the GO can have up to 256 levels of alpha-blending, enabling simultaneous display of interactive graphics with full-motion video. The display planes are used for system-level displays and highlights/shadow control that simplifies electronic program guide (EPG) generation and navigation. A hardware cursor is also included. Anti-flutter circuitry ensures sharp and stable image display, eliminating flickering that occurs when displaying text and graphics.

Integrated Host Processor

- 100-MHz MicroSPARC RISC core
- 4K data cache
- 2K instruction cache
- 64-bit internal memory architecture
- Dedicated MPEG-2 A/V processing units with DMA engines

MPEG Stream Demultiplexor

- Decodes MPEG-2 program and transport streams
- Performs start code and sync byte scanning and detection

Decoder Formats Supported

- ISO 11172 (MPEG-1)
- ISO 13818 (MPEG-2)
- MPEG-1 and MPEG-2 2-channel audio decoder (Layers 1 & 2)
- Decodes full CCIR601 resolution:
 - 720x480 @ 30 Hz (NTSC)
 - 720x576 @ 25 Hz (PAL)

Video Encoder

Encoder Formats Supported

- NTSC up to 720x480 @ 30 Hz
- PAL up to 720x576 @ 25 Hz
- SCART-compatible output

Video Scaling

- NTSC-to-PAL, PAL-to-NTSC reformatting
- 16:9 to 4:3 Letterbox
- 16:9 to 4:3 Pan & Scan
- 16:9 to 14:9
- Supports wide-screen signalling (WSS)

Output Modes

- SCART-compatible output, including digital video output
- Component video output (YCrCb)
- S-video output
- Simultaneous output of composite, SCART and s-video

OTI-8215 Product Brief

Technical Specifications Cont'd.



Package/Process

- 208-pin PQFP
- 0.3 μ quad-layer metal process, 3.3V and 5V tolerant

VBI Support

- VBI/TTX/CC insertion at internal encoder
- VBI/TTX interface to external video encoder

Special Features

- Flutter reduction circuit for OSD graphics
- Optional Macrovision-ready (7.1)

Integrated PLLs

- 4-18 MHz audio clock
- 80-100 MHz system clock

Display Surfaces

GO (Graphics Overlay)

- 16 and 256 indexed color mode (8bpp), with 16 levels of transparency (CLUT has YCrCb 4:4:4 values)
- 65,536-color mode (16bpp) in YCrCb 4:2:2 format
- Still picture (generated from video) in YCrCb 4:2:2 format
- Arbitrary display window position and size
- 2x zoom (horizontal, vertical) and filtering

Cursor Plane

- Hardware cursor
- Arbitrary cursor size up to full screen
- 2 bits per pixel
- Transparency on/off

Graphics Highlight

- Color index shift for fast, easy menu highlighting
- ColorShift1 (shadow effects)
- ColorShift2 (highlight effects)

Background Color

- Solid color in YCrCb format

Video Border Color

- Solid color in YCrCb format

Primary Video Surface

- YCrCb 4:2:0 format
- Scaling up to 4x zoom or 1/4x reduction

Memory Interfaces

SDRAM Interface

- Width: 32 bits
- Speed: programmable up to 100 MHz
- Capacity: 32-64 Mbits, using two or four 1Mx16 devices, a single 1Mx32

ROM/Flash Interface

- Width: 8 bits
- Speed: 120ns
- Capacity: 128KB-4MB

System Interfaces

MPEG Stream Input

- 8-bit parallel and serial interfaces, support industry-standard demodulators including Oak's OTI-7000, OTI-8511 QPSK and OTI-8515 integrated QPSK

Microprocessor Interface

- 8-/16-bit parallel host interface
- Intel and Motorola

Common Interface

- Compliant with DVB-CA standard (EN 50221)
- Type: 2x PCMCIA
- Supports conditional access/decryption modules that conform to the common interface specification

Audio Interface

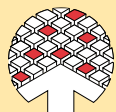
- I²S out (audio DAC) supporting 16- and 18-bit stereo formats
- S/P DIF (IEC-958) output supporting 16-24 bit format, 2 to 5.1 channel and up to 96 KHz sample output rate

Peripheral Interface

- Industry-standard serial interface
- Programmable I/O ports (8-16)
- UART
- IR remote control input interface

Video Interface

- S-video out
- Composite-video out
- CCIR656 digital video output for external video encoder



OAK TECHNOLOGY®

corporate offices

Corporate Headquarters

Oak Technology
139 Kifer Court
Sunnyvale, CA 94086
U.S.A.
Ph: (408) 737-0888

Subsidiaries

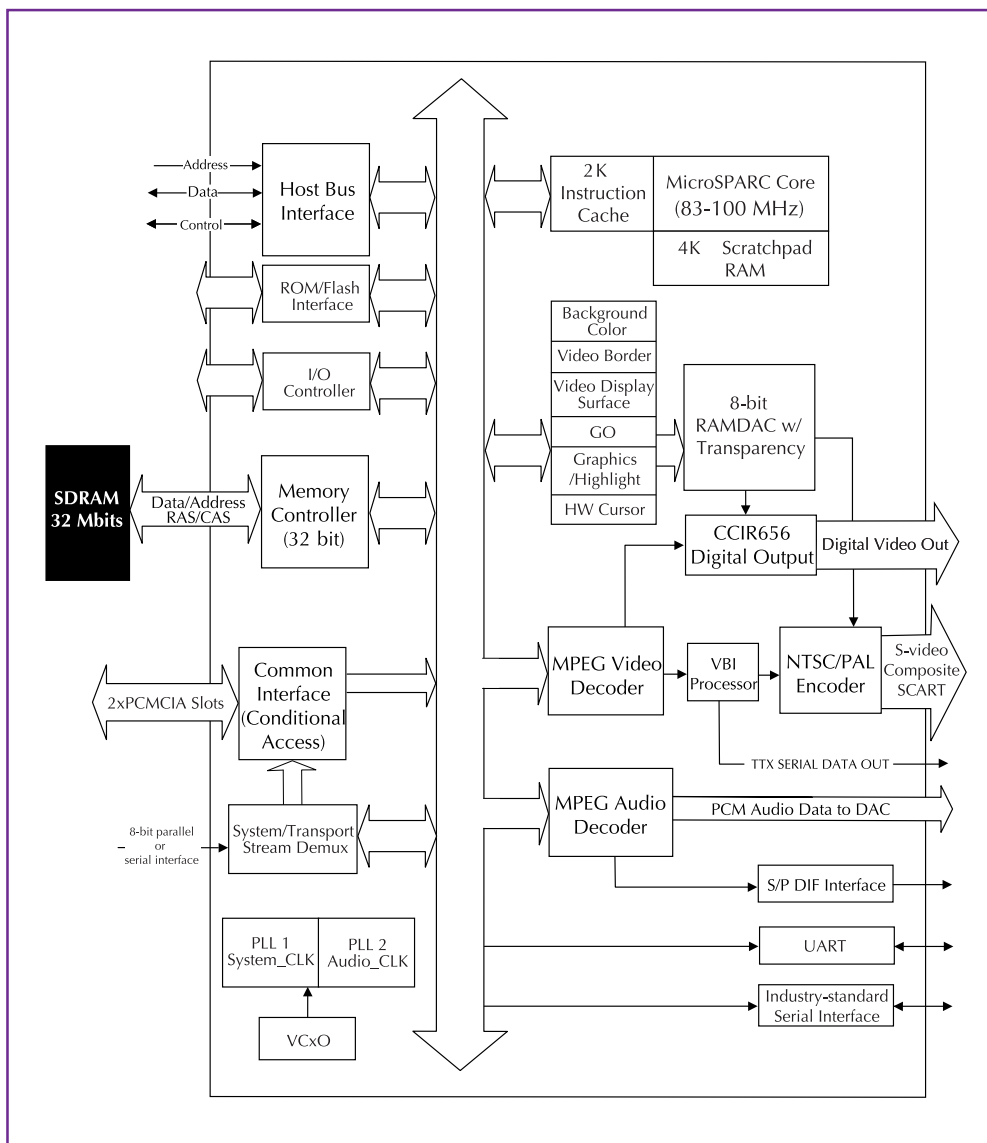
Pixel Magic, Inc.
300 Brickstone Square
Andover, Massachusetts 01810
Ph: 978-470-8830
Fax: 978-470-8892
www.pixelmagic.com

Oak Technology, Taiwan
Room B, 7F, No. 370
Section 1, Fu Hsing South Road
Taipei, Taiwan R.O.C.
Ph: 886-2-2784-9123

Oak Technology, KK
Musashino Nissay Plaza 5F
1-11-4, Nakamachi, Musashino City
Tokyo, Japan 180-8536
Ph: 81-0422-56-3761

Oak Technology GmbH
Elly-Staegmeyer-Str. 15
D-80999 Muenchen (Munich)
Germany
Ph: 49-89-89211026

Oak Technology Limited
Castlegate
Tower Hill
Bristol, BS2 0JA
United Kingdom
Ph: 44-117-917-0917



Detailed Block Diagram

© Copyright 1999 Oak Technology, Inc. All rights reserved. Oak Technology and the Oak logo are registered trademarks of Oak Technology. Pixel Magic is a trademark of Oak Technology. All other brands, product names and company names are trademarks or registered trademarks of their respective owners. The information in this document is believed to be reliable. However, Oak Technology, Inc. makes no guarantee or warranty concerning the accuracy of said information and shall not be responsible for any loss or damage of whatever nature resulting from the use of, or reliance upon it. Oak does not guarantee that the use of any information contained herein will not infringe upon patent, trademark, copyright, or rights of third parties. No patent or license is implied hereby. This document does not in any way extend the warranty on any product beyond that set forth in Oak's standard terms and conditions of sale. Oak Technology, Inc. reserves the right to make changes in the product or specifications, or both, presented in this publication at any time without notice.