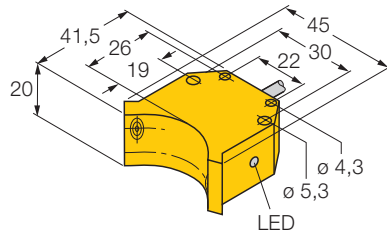
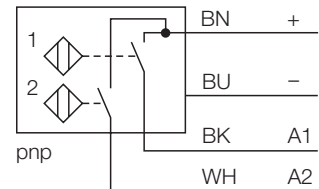


## inductive dual sensor for rotary actuators Ni4-DS20-2AP6X2



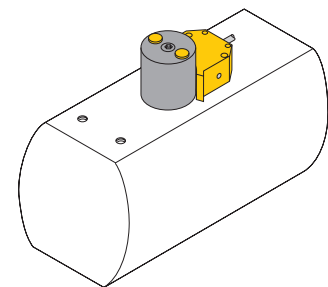
- dual sensor, housing style DS20
- plastic, PBT-GF30-VO
- two switching outputs for monitoring the position of rotary actuators
- mounting on all standard actuators without additional mounting hardware
- 2 x normally open, pnp output
- 4-wire DC, 10...30 VDC

### Wiring diagram



### Function principles

Inductive proximity switches are designed for wear-free non-contact detection of metal objects. Dual sensors are especially designed for position detection in rotary actuators. They combine the reliability of non-contact inductive sensor with the flexibility of a modular housing system.



<b>Type</b>	Ni4-DS20-2AP6X2
Ident-No.	1650022
<b>Rated operating distance <math>S_n</math></b>	4 mm
Mounting mode	non-flush
Hysteresis (switching distance)	3... 15 %
Min. repeat accuracy	≤ 2 %
Temperature drift	≤ ± 10 %
Operating temperature	-25 ... + 70 °C
<b>Rated operational voltage (DC) <math>U_B</math></b>	10... 30 VDC
Max. ripple	≤ 10 % $U_{pp}$
Rated operational current (DC) $I_e$	≤ 200 mA
No-load current $I_0$	≤ 15 mA
Max. OFF-state current	≤ 0,1 mA
Max. switching frequency	≤ 0,05 kHz
Rated insulation voltage	≤ 0,5 kV
Output function	4-wire, normally open, PNP
Short-circuit protection	yes, cyclic
Max. voltage drop at $I_e$	≤ 1,8 V
Wire breakage / reverse polarity protection	yes / complete
<b>Housing style</b>	dual sensor for valve monitoring; DS20
Dimensions	42 x 45 x 20 mm
Housing material	plastic, PBT-GF30-V0
Active face	plastic, PBT-GF30-V0
Wiring	cable
Cable	Ø 5,2, LifYY, PVC, 2 m
Cable cross section	4 x 0,34 mm <sup>2</sup>
Vibration resistance	55 Hz (1 mm)
Shock resistance	30 x g (11 ms)
Degree of protection	IP67
<b>Switching status indication</b>	2 x LED yellow / red

**inductive  
dual sensor for rotary actuators  
Ni4-DS20-2AP6X2**

---

**Mounting instructions**

see mounting accessories

**inductive  
dual sensor for rotary actuators  
Ni4-DS20-2AP6X2**

**Accessories**

Typ	Ident-No.	Description	Dimension drawing
BTS-DS20-TP1	6900155	actuation kit (puck); end position dampened; hole pattern on flange surface 80 x 30 mm; connection shaft (shaft extension) height 20 mm / Ø max. 30 mm	
BTS-DS20-TK1	6900156	actuation kit (puck); end position dampened; hole pattern on flange surface 80 x 30 mm (130 x 30 mm); connection shaft (shaft extension) height 30 mm / Ø max. 30 mm	
BTS-DS20-KEY	6900136	actuation kit (puck), end position dampened and adjustable switch point; hole pattern on flange surface 80 x 30 mm (130 x 30 mm); connection shaft (shaft extension) height 20 / Ø max. 22 mm	