

## SW. REG. Control IC with Current Sense AMP.

NJM2381

### ■ GENERAL DESCRIPTION

The NJM2381 is a low voltage operation DC/DC converter control IC.

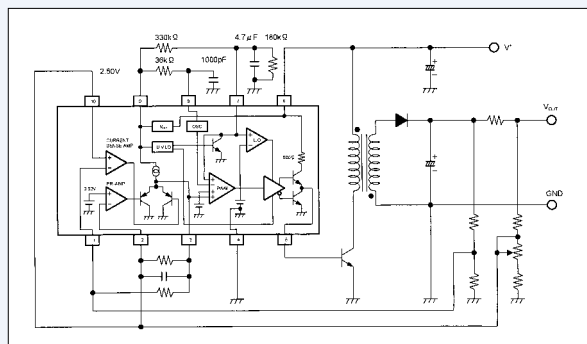
It features totem pole output directly driving external bipolar transistor and operates at high switching frequency which improves transient response.

It is suitable for LCD back light and other portable applications.

### ■ FEATURES

- Operating Voltage : ( $V^+=3.6V$  to  $32V$ )
- Wide Oscillator Range : ( $f_{osc}=5kHz$  to  $350kHz$ )
- Current Sense Amplifier
- Soft Start Function
- UVLO (Under Voltage Lockouts)
- Bipolar Technology
- Package Outline : DIP14,DMP14 (U.D.)  
: SSOP10

### ■ BLOCK DIAGRAM



## SW. REG. Control IC with Current Sense AMP.

NJM2382

### ■ GENERAL DESCRIPTION

The NJM2382 is a low voltage operation DC/DC converter control IC.

It features totem pole output directly driving external bipolar transistor and operates at high switching frequency which improves transient response. In addition, low power standby function is incorporated.

It is suitable for LCD back light and other portable applications.

### ■ FEATURES

- PWM switching control
- Operating Voltage : ( $V^+=3.6V$  to  $32V$ )
- Wide Oscillator Range : ( $f_{osc}=5kHz$  to  $350kHz$ )
- Standby Function : ("HIGH" Active)
- Current Sense Amplifier
- Soft Start Function
- UVLO (Under Voltage Lockouts)
- Bipolar Technology
- Package Outline : DIP14,DMP14(U.D.)  
: SSOP10

### ■ BLOCK DIAGRAM

