

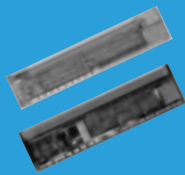
12-Ch / 4-L Dot Matrix LCD controller Driver with Icon display

NJU6465

[DATA SHEET](#)

NJU6620

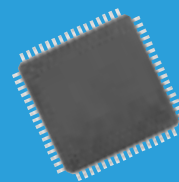
[DATA SHEET](#)



12-Ch / 1-L Dot Matrix LCD controller Driver with Icon display

NJU6467

[DATA SHEET](#)



■ GENERAL DESCRIPTION

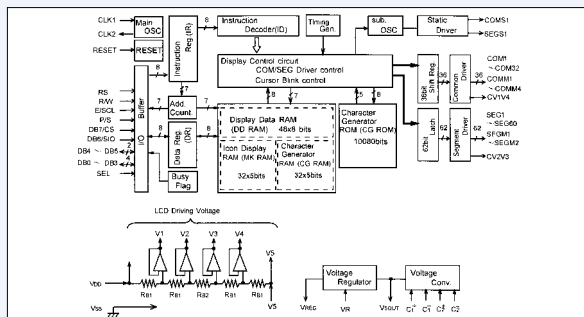
The NJU6465/6620 is a Dot Matrix LCD controller Driver for 12-character 4-line with icon display(128-icon) maximum by itself.

It contains voltage Tripler, bleeder resistance to generate about triple voltage (9V) and the bias for LCD Driving waveform internally from single power supply(3V). The NJU6620 realizes replacement from the NJU6465.

■ FEATURES

- 12-character/4-line Dot Matrix LCD controller driver
- Character Generator ROM : 10,080 bits
- Character Generator RAM : 32x5 bits
- Icon Display RAM : 32x5 bits
- Software contrast control(Voltage Regulator On-chip)
- Voltage Tripler On-chip
- Low power consumption
- Operating voltage
 - NJU6465 : 2.4V to 3.6V(Except LCD Driving Voltage)
 - NJU6620 : 2.4V to 3.3V(Except LCD Driving Voltage)
- Package outline
 - NJU6465 : Bump-chip(Rectangle shaped for COG)
 - NJU6620 : Bump-chip(Rectangle shaped for COG)

■ BLOCK DIAGRAM



■ GENERAL DESCRIPTION

The NJU6467 is a Dot Matrix LCD controller Driver for 12-character 1-line with icon display(24-icon) maximum by itself.

■ FEATURES

- 12-character/1-line Dot Matrix LCD controller driver
- Serial Interface
- Character Generator ROM : 7,680 bits
- Character Generator RAM : 32x5 bits
- Icon Display RAM : 5x5 bits
- Low power consumption : 25uA Typ.
- Operating voltage : 2.4V to 3.6V(Except LCD Driving Voltage)
- Package outline : QFP64-G1

■ BLOCK DIAGRAM

