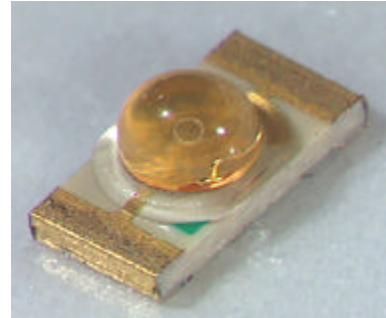


## 3216 Dome-Lens chip LED

### ■ Feature

- 3216 chip LED that adopted a dome shaped lens.
- Luminous intensity is about double of conventional flat lens type by lens effect.
- Viewing angle is around 80 degrees ( $2\theta_{1/2}$ ).  
( 30 degrees type is available as well. )



### ■ Applications

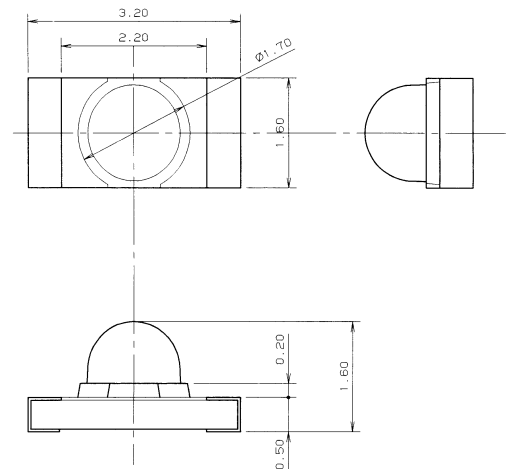
Indicator / Lighting source

### ■ Dimension

3.2L × 1.6W × 1.38H mm

### ■ Current status

Design Sample is available now.  
Production can be started on demand.



The products and specification are subject to change without any notice. Please ask for the latest Product Standards to guarantee the satisfaction of your product requirements.

Semiconductor Company, Matsushita Electric Industrial Co., Ltd.