

# LM2622 Step-Up DC/DC Converter Evaluation Board

National Semiconductor  
Application Note 1198  
Clinton Jensen  
May 2001



## Introduction

The LM2622 is a step-up converter with an adjustable switching frequency and a low power shutdown feature. The evaluation board was designed for boosting a 1-cell Li-Ion battery input voltage to a regulated output of 5V. The board includes 2 jumpers: One selects whether the part is running

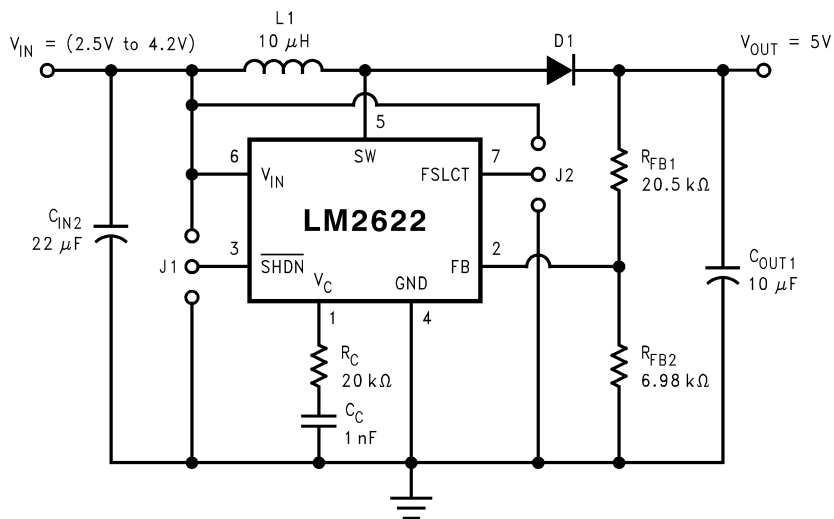
or is in shutdown mode, and the other selects a switching frequency of either 600 kHz or 1.3 MHz. The component values on the board are designed for 600 kHz operation, but will work well at 1.3MHz. Smaller component values can generally be used if the part is operated at the higher frequency. The bill of materials and the schematic follows:

TABLE 1. Bill Of Materials

Designator	Description	Manufacturer	Model Number
U1	Step-Up Regulator	National Semiconductor	LM2622
L1	Inductor (1.2A average rating)	Sumida	CRDH5D18-100NC
C <sub>IN2</sub>	Input Capacitor (22μF, 10V rating)	Taiyo-Yuden	LMK432BJ226K
C <sub>OUT1</sub>	Output Capacitor (10μF, 16V rating)	Taiyo-Yuden	EMK325BJ106K
D1	Output Diode	International Rectifier	15MQ040N
R <sub>FB1</sub>	20.5 kΩ Feedback Resistor		
R <sub>FB2</sub>	6.98 kΩ Feedback Resistor		
R <sub>C</sub>	20 kΩ Compensation Resistor		
C <sub>C</sub>	1 nF Compensation Resistor		

Because of the capacitor ratings, the input to the board should always be 10V or less and the output should not be set to higher than 16V. Higher voltages (to the IC limits) may be used if higher voltage capacitors are used. A larger

inductor may also be required if the input current is expected to exceed 1.2A, or if output short circuit conditions are anticipated.



AN200218-1

## Notes

**LIFE SUPPORT POLICY**

NATIONAL'S PRODUCTS ARE NOT AUTHORIZED FOR USE AS CRITICAL COMPONENTS IN LIFE SUPPORT DEVICES OR SYSTEMS WITHOUT THE EXPRESS WRITTEN APPROVAL OF THE PRESIDENT AND GENERAL COUNSEL OF NATIONAL SEMICONDUCTOR CORPORATION. As used herein:

1. Life support devices or systems are devices or systems which, (a) are intended for surgical implant into the body, or (b) support or sustain life, and whose failure to perform when properly used in accordance with instructions for use provided in the labeling, can be reasonably expected to result in a significant injury to the user.
2. A critical component is any component of a life support device or system whose failure to perform can be reasonably expected to cause the failure of the life support device or system, or to affect its safety or effectiveness.



**National Semiconductor Corporation**  
Americas  
Tel: 1-800-272-9959  
Fax: 1-800-737-7018  
Email: support@nsc.com  
www.national.com

**National Semiconductor Europe**  
Fax: +49 (0) 180-530 85 86  
Email: europe.support@nsc.com  
Deutsch Tel: +49 (0) 69 9508 6208  
English Tel: +44 (0) 870 24 0 2171  
Français Tel: +33 (0) 1 41 91 8790

**National Semiconductor Asia Pacific Customer Response Group**  
Tel: 65-2544466  
Fax: 65-2504466  
Email: ap.support@nsc.com

**National Semiconductor Japan Ltd.**  
Tel: 81-3-5639-7560  
Fax: 81-3-5639-7507