



SAW Components

Data Sheet K 9462 M

Data Sheet

A large, stylized, 3D-rendered graphic of the EPCOS logo. The letters "EPCOS" are in a bold, sans-serif font, appearing to be part of a larger, curved structure that resembles a stylized globe or a series of overlapping planes. The graphic is rendered in a light gray color against a dark, textured background.



SAW Components

K 9462 M

IF Filter for Audio Applications

38,90 MHz

Data Sheet

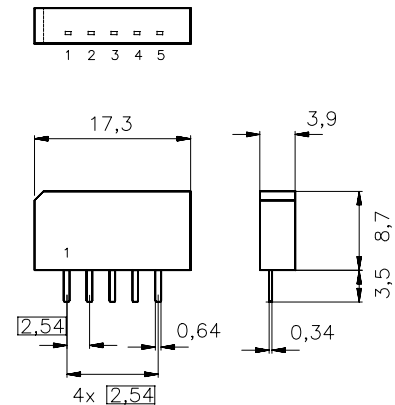
Standard

- B/G
- D/K
- I
- M/N

Plastic package **SIP5K**

Features

- TV IF audio filter with two channels
- Channel 1 (M/N) with one pass band for sound carrier at 34,40 MHz
- Channel 2 (B/G, D/K, I) with one pass band for sound carriers at 32,35 MHz (I NICAM), 32,40 MHz (D/K), 32,90 MHz (I) and 33,40 MHz (B/G)



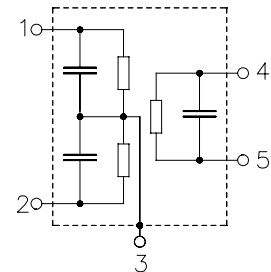
Dimensions in mm, approx. weight 1,0 g

Terminals

- Tinned CuFe alloy

Pin configuration

- 1 Input channel 1 / Input ground
- 2 Input ground / Input channel 2
- 3 Chip carrier - ground
- 4 Output
- 5 Output



Type	Ordering code	Marking and package according to	Packing according to
K 9462 M	B39389-K9462-M100	C61157-A1-A15	F61074-V8067-Z000

Maximum ratings

Operable temperature range	T_A	-25/+65	°C	
Storage temperature range	T_{stg}	-40/+85	°C	
DC voltage	V_{DC}	12	V	between any terminals
AC voltage	V_{pp}	10	V	between any terminals



SAW Components

K 9462 M

IF Filter for Audio Applications

38,90 MHz

Data Sheet

Characteristics of channel 1

Reference temperature:

$$T_A = 25\text{ °C}$$

Terminating source impedance:

$$Z_S = 50\ \Omega$$

Terminating load impedance:

$$Z_L = 2\text{ k}\Omega \parallel 3\text{ pF}$$

		min.	typ.	max.	
Insertion attenuation	α				
Reference level for the following data	34,40 MHz	13,7	15,2	16,7	dB
Relative attenuation	α_{rel}				
Picture carrier	38,90 MHz	40,0	48,0	—	dB
Color carrier	35,32 MHz	27,0	35,0	—	dB
Adjacent picture carrier	32,90 MHz	32,0	39,0	—	dB
Adjacent sound carrier	40,40 MHz	42,0	54,0	—	dB
Lower sidelobe	25,00 ... 32,90 MHz	27,0	33,0	—	dB
Upper sidelobe	38,90 ... 45,00 MHz	37,0	45,0	—	dB
Impedance at 34,40 MHz					
Input: $Z_{\text{IN}} = R_{\text{IN}} \parallel C_{\text{IN}}$		—	0,6 12,5	—	k Ω pF
Output: $Z_{\text{OUT}} = R_{\text{OUT}} \parallel C_{\text{OUT}}$		—	1,2 4,7	—	k Ω pF
Temperature coefficient of frequency	TC_f	—	-72	—	ppm/K



SAW Components

K 9462 M

IF Filter for Audio Applications

38,90 MHz

Data Sheet

Characteristics of channel 2

Reference temperature:

$$T_A = 25\text{ °C}$$

Terminating source impedance:

$$Z_S = 50\ \Omega$$

Terminating load impedance:

$$Z_L = 2\text{ k}\Omega \parallel 3\text{ pF}$$

		min.	typ.	max.	
Insertion attenuation α					
Reference level for the following data	33,40 MHz	14,9	16,4	17,9	dB
Relative attenuation α_{rel}					
Sound carrier I NICAM	32,35 MHz	-0,8	0,2	1,2	dB
Sound carrier D/K	32,40 MHz	—	0,1	—	dB
Sound carrier I	32,90 MHz	-1,3	-0,3	0,7	dB
Picture carrier	38,90 MHz	35,0	42,0	—	dB
Color carrier	34,47 MHz	25,0	30,0	—	dB
Adjacent picture carrier	30,90 MHz	38,0	45,0	—	dB
Adjacent sound carrier B/G, D/K	40,40 MHz	40,0	51,0	—	dB
Adjacent sound carrier I	40,90 MHz	38,0	44,0	—	dB
Adjacent sound carrier B/G (UHF)	41,40 MHz	36,0	43,0	—	dB
Lower sidelobe	25,00 ... 30,90 MHz	34,0	42,0	—	dB
Upper sidelobe	38,90 ... 45,00 MHz	34,0	41,0	—	dB
Impedance at 33,40 MHz					
Input: $Z_{\text{IN}} = R_{\text{IN}} \parallel C_{\text{IN}}$		—	1,1 \parallel 10,1	—	k Ω \parallel pF
Output: $Z_{\text{OUT}} = R_{\text{OUT}} \parallel C_{\text{OUT}}$		—	0,8 \parallel 9,1	—	k Ω \parallel pF
Temperature coefficient of frequency TC_f					
		—	-72	—	ppm/K



SAW Components

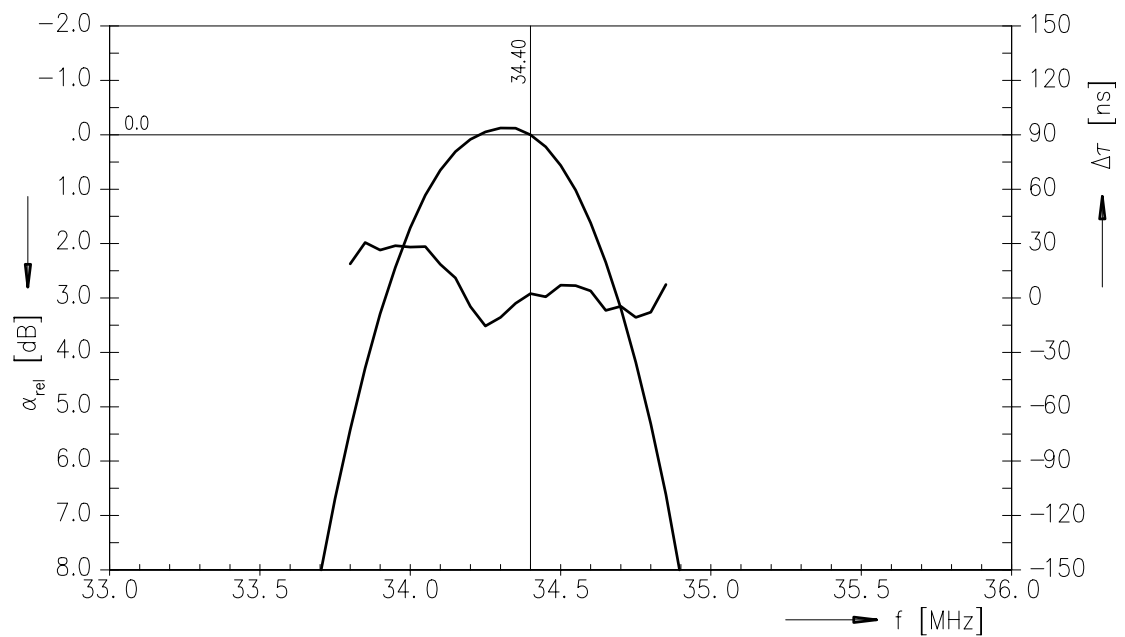
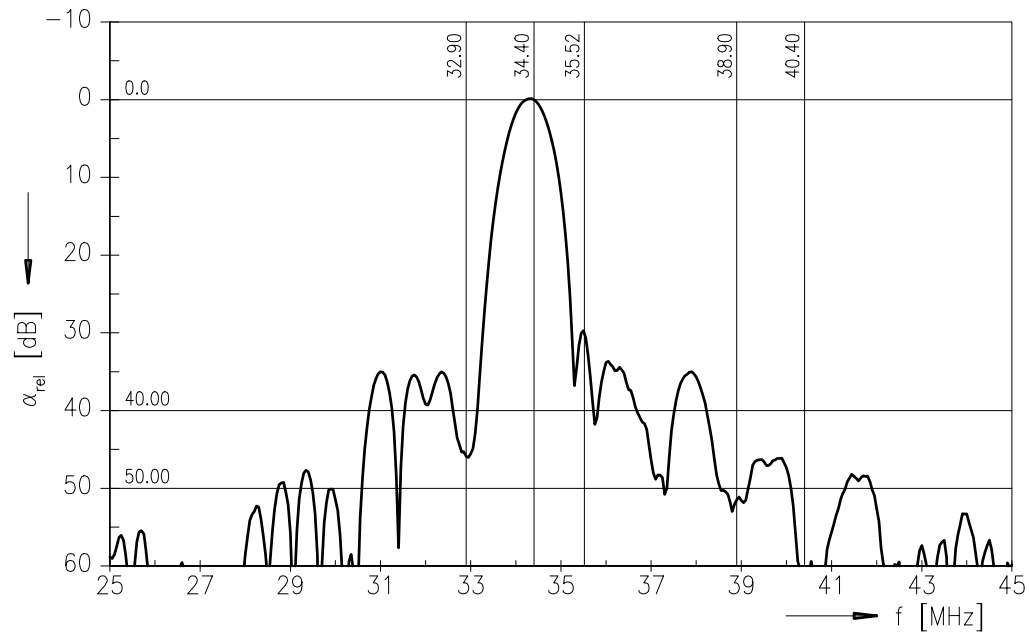
K 9462 M

IF Filter for Audio Applications

38,90 MHz

Data Sheet

Frequency response of channel 1





SAW Components

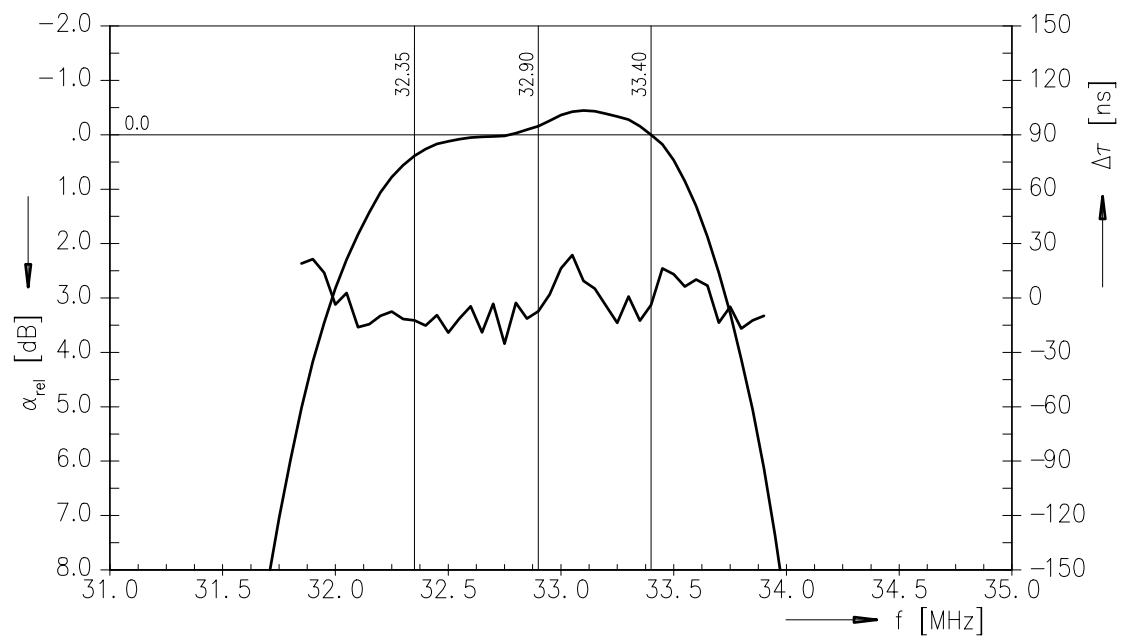
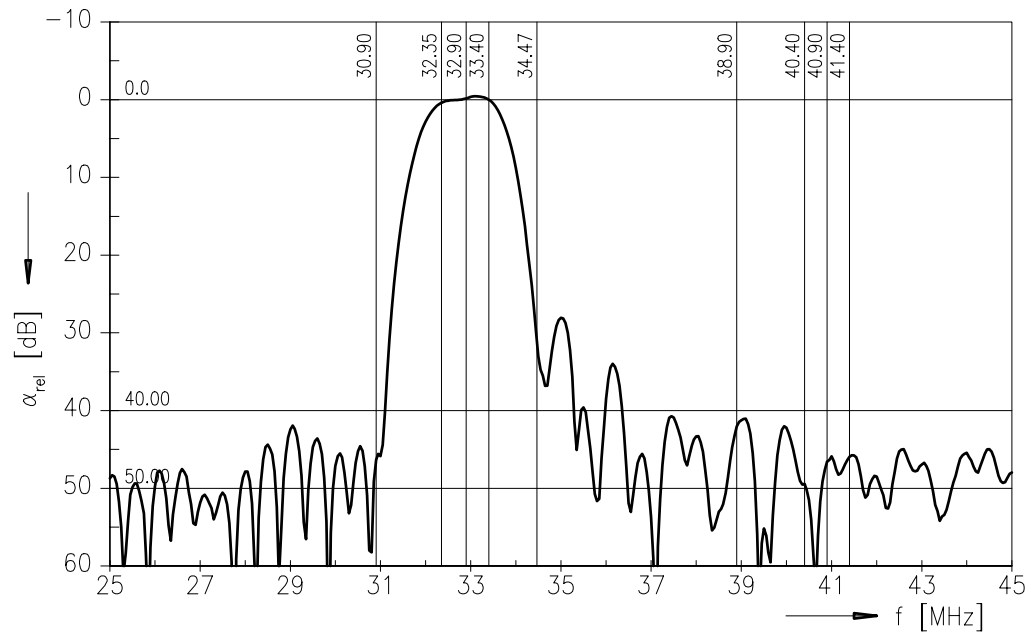
K 9462 M

IF Filter for Audio Applications

38,90 MHz

Data Sheet

Frequency response of channel 2





SAW Components	K 9462 M
IF Filter for Audio Applications	38,90 MHz

Data Sheet

Published by EPCOS AG
Surface Acoustic Wave Components Division, OFW E UE
P.O. Box 80 17 09, D-81617 München

© EPCOS AG 1999. All Rights Reserved.

As far as patents or other rights of third parties are concerned, liability is only assumed for components per se, not for applications, processes and circuits implemented within components or assemblies.

The information describes the type of component and shall not be considered as assured characteristics.

Terms of delivery and rights to change design reserved.

For questions on technology, prices and delivery please contact the sales offices of EPCOS AG or the international representatives.

Due to technical requirements components may contain dangerous substances. For information on the type in question please also contact one of our sales offices.