

Ceramic Monoblock Bandpass Filter

CTS

WIRELESS COMPONENTS

Model KFF6444A Technical Data

Features:

- Excellent Rejection
- Small Size
- SMD

Description and Applications:

This is a 5 pole monoblock Bandpass filter at 1090MHz in the aeronautical and radionavigation spectrum typically used in TCAS applications.



Electrical Specifications

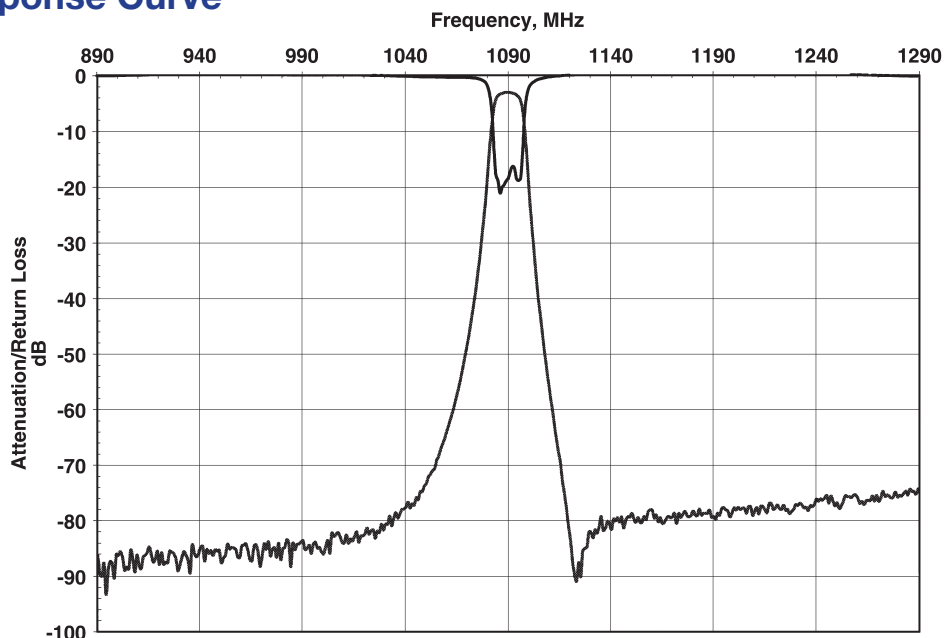
Parameters	Frequency	Specifications @ 25° C
Insertion Loss	1085 MHz to 1095 MHz	4.5 dB max.
Forward Return Loss		10.0 dB min.
Attenuation	1065 MHz	55.0 dB min.
Attenuation	1113 MHz	55.0 dB min.
Power Rating		5 W
Impedance		50 Ω

NOTE: Supplier shall test each filter to the critical electrical specifications listed above or better. Any subsequent audits may deviate due to measurement repeatability among different test systems. Such deviations shall not exceed the following limits:

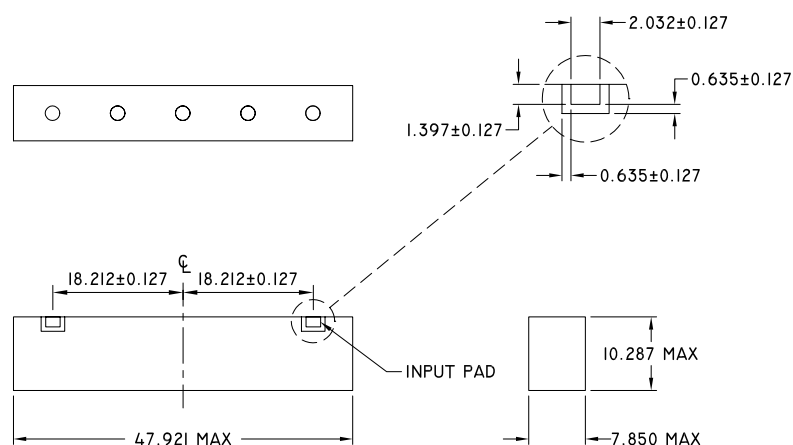
Specification	Typical Allowance
Insertion Loss	0.1 dB
Return Loss	1.0 dB
Stopbands	1.0 dB

Rev. 2

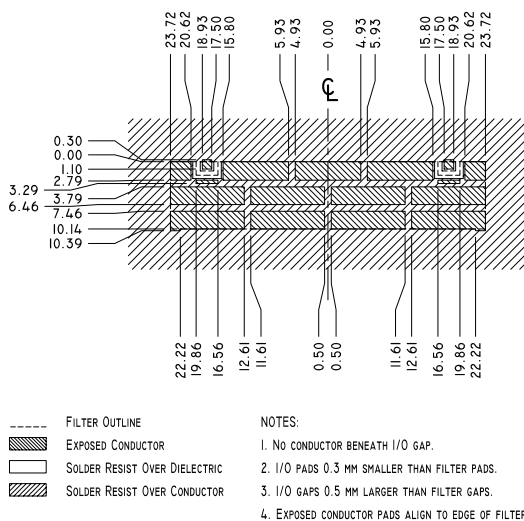
Typical Response Curve



Mechanical Dimensions



PC Board Layout



Part Marking

Y = LAST DIGIT OF YEAR
WW = SEQUENTIAL WEEK NUMBER

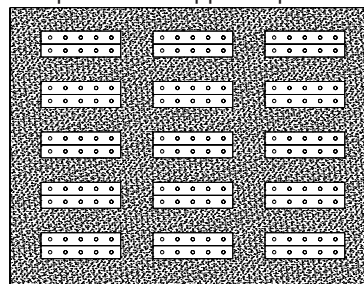
KFF6444A

CTS

YWW

Packaging

This product is shipped in pre-formed foam trays.



Contact Information:

CTS WIRELESS COMPONENTS, INC. / 171 Covington Drive / Bloomingdale, IL 60108
PHONE: (800) 757-6686 / FAX: (630) 924-6610 / www.ctscorp.com

Document Control #6287046Y01 Rev 2

Date of Origin 01/29/01

Date of Revision 02/26/01

THIS DATA SHEET IS NOT AN OFFER FOR SALE AND SHALL NOT OBLIGATE CTS TO SELL THE PRODUCTS DESCRIBED HEREIN OR ANY OTHER PRODUCTS. CTS MAY, IN ITS SOLE DISCRETION, MODIFY OR DISCONTINUE THE SALE OF ITS PRODUCTS AT ANY TIME WITHOUT NOTICE. CTS MAKES NO WARRANTY, INCLUDING WARRANTIES OF MERCHANTABILITY OR FITNESS FOR A PARTICULAR PURPOSE, WITH RESPECT TO THE PRODUCTS REFERENCED OR INFORMATION PROVIDED HEREIN.

CTS® is a registered trademark of CTS Corporation.