

Ceramic Monoblock Bandpass Filter

CTS

WIRELESS COMPONENTS

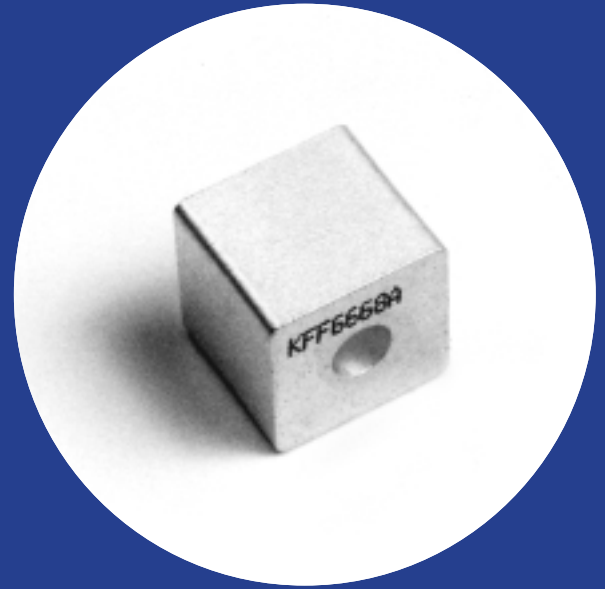
Model KFF6668A Technical Data

Features:

- Small Size
- High Performance
- SMD

Description and Applications:

This monoblock filter is suitable for aeronautical radionavigation applications at 1033MHz, primarily TCAS.



Electrical Specifications

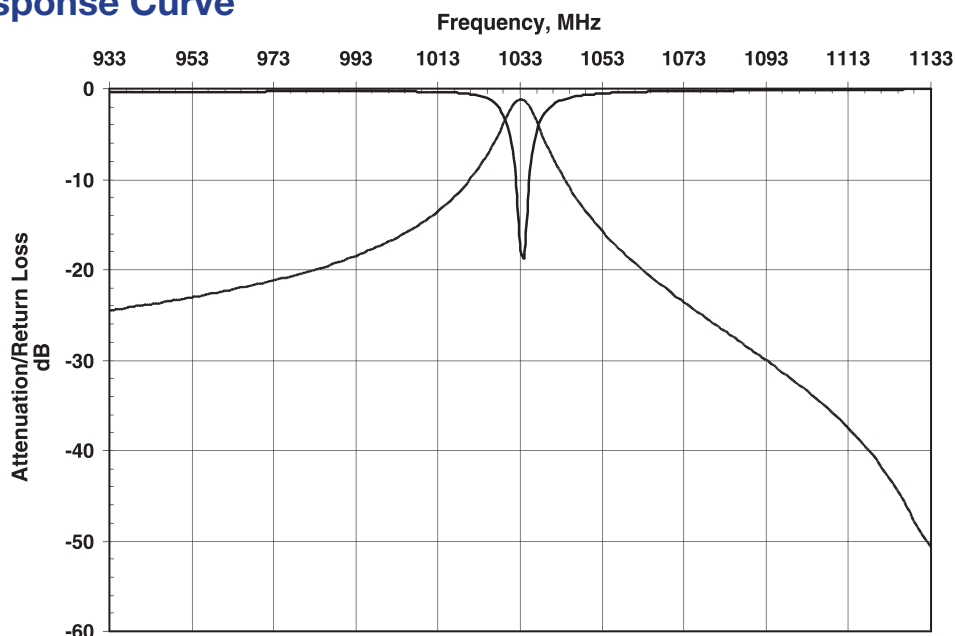
Parameters	Frequency	Specifications @ 25° C
Insertion Loss	1033 MHz	1.4 dB max.
Forward Return Loss		15.5 dB min.
Attenuation	1027 MHz	3.0 dB min.
Attenuation	1039 MHz	3.0 dB min.
Power Rating		1 W
Impedance		50 Ω

NOTE: Supplier shall test each filter to the critical electrical specifications listed above or better. Any subsequent audits may deviate due to measurement repeatability among different test systems. Such deviations shall not exceed the following limits:

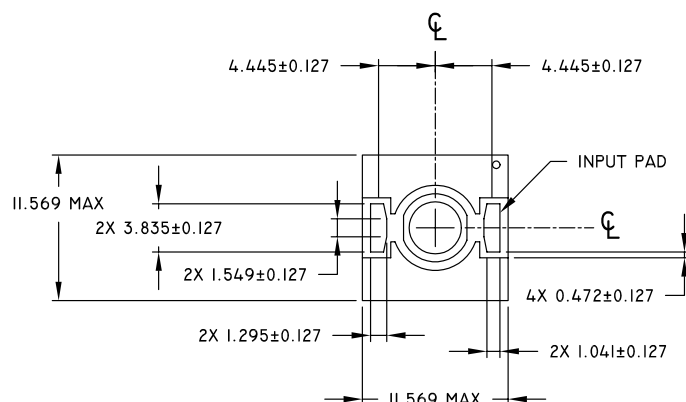
Specification	Typical Allowance
Insertion Loss	0.1 dB
Return Loss	1.0 dB
Stopbands	1.0 dB

Rev. 1

Typical Response Curve

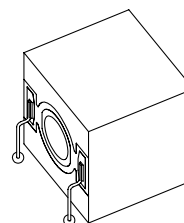


Mechanical Dimensions



All dimensions in mm

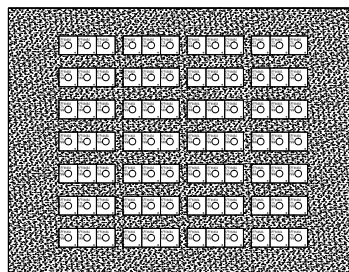
PC Board Layout



MOUNTING VARIES BY INDIVIDUAL CUSTOMER.

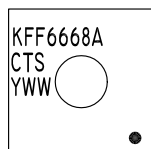
Packaging

This product is shipped in pre-formed foam trays.



Part Marking

Y = LAST DIGIT OF YEAR
WW = SEQUENTIAL WEEK NUMBER



Contact Information:

CTS WIRELESS COMPONENTS, INC. / 171 Covington Drive / Bloomingdale, IL 60108
PHONE: (800) 757-6686 / www.ctscorp.com

Document Control #6287061Y01 Rev 1

Date of Origin 04/25/01

Date of Revision 04/25/01

THIS DATA SHEET IS NOT AN OFFER FOR SALE AND SHALL NOT OBLIGATE CTS TO SELL THE PRODUCTS DESCRIBED HEREIN OR ANY OTHER PRODUCTS. CTS MAY, IN ITS SOLE DISCRETION, MODIFY OR DISCONTINUE THE SALE OF ITS PRODUCTS AT ANY TIME WITHOUT NOTICE. CTS MAKES NO WARRANTY, INCLUDING WARRANTIES OF MERCHANTABILITY OR FITNESS FOR A PARTICULAR PURPOSE, WITH RESPECT TO THE PRODUCTS REFERENCED OR INFORMATION PROVIDED HEREIN.

CTS® is a registered trademark of CTS Corporation.