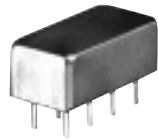


VOLTAGE CONTROLLED OSCILLATORS

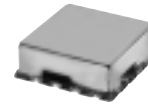
Additional Performance Data From Our Engineering Database*



A06



BK377



CK605

REFERENCE NO.	FREQUENCY COVERAGE MHz		TUNE VOLTAGE V		PULLING MHz pk-pk @12 dB	PUSHING MHz/V	3 dB MOD. BANDWIDTH kHz	POWER SUPPLY		CAPD DATA FOR ADDITIONAL PARAMETERS	CASE STYLE
	Min.	Max.	Min.	Max.	Typ.	Typ.	Typ.	Voltage V	CURRENT mA Max.		
POS-ED5319/1	75	114	0.5	7.0	0.50	1.30	200	5	15	A06 CK605 CK605	
ROS-EDR4275/1	100	200	1.0	16.0	0.60	0.20	130	12	16		
ROS-ED6923/1	99	113	0.3	7.0	0.10	0.15	2000	5	20		
POS-ED4782A/1	114	149	1.0	18.0	0.04	0.02	2000	12	25	C145 A06 C145	
POS-ED6684/1	123	271	1.0	20.0	0.50	0.30	1000	12	20		
POS-ED4783A/1	134	175	1.0	18.0	0.05	0.03	2000	12	25		
ROS-ED6770/3	161	240	1.0	15.0	0.50	0.10	400	12	30	CK605 BJ293 CK605	
JYOS-ED5398/3	164	259	0.5	5.0	1.10	3.20	95	3	10		
ROS-EDR4294	182	253	0.5	13.0	0.20	0.50	1700	12	20		
JTOS-ED4905/12	184	249	0.3	6.0	0.07	1.30	120	5	15	BK377 BK377 BJ293	
JTOS-ED6869/2	197	444	1.0	20.0	0.60	0.20	260	12	25		
JYOS-ED5788	237	354	0.5	7.0	2.60	3.00	220	3	10		
JTOS-ED5955A/2	232	419	0.5	11.0	0.40	0.10	140	12	20	FOR DATA CK605 CK605	
ROS-ED6845/4	329	388	0.5	7.0	1.00	0.30	1000	12	50		
ROS-EDR4239/2	336	369	0.5	5.0	2.00	0.20	1000	11	12		
POS-ED4638/1	322	473	0.5	7.0	1.40	1.30	50	5	20	SEE YONI ON OUR WEBSITE	
JTOS-ED5563/1	323	478	0.5	10.0	0.90	1.50	450	12	25		
JYOS-ED6587/2	377	499	0.5	7.0	0.60	0.60	100	5	18		
JTOS-ED5769/2	386	835	1.0	15.0	4.40	1.30	100	10	25	BK377 CK605 BK377	
ROS-EDR4268	395	489	0.5	5.0	1.50	0.50	330	5	10		
JTOS-ED6579/6	423	997	1.0	19.0	9.60	4.80	100	5	15		
JTOS-ED4883/5	439	532	0.3	5.0	1.30	0.60	420	10	25	BK377 BK377 A06	
JTOS-ED6124/2	491	753	0.5	6.0	4.10	3.10	750	5	30		
POS-ED5634B/2	450	1152	0.3	19.0	6.00	1.50	100	12	20		
ROS-EDR4142	501	533	0.5	5.0	3.50	0.50	2200	5	8	CK605 CK605 CK605	
JROS-ED5930A/1	476	794	0.3	6.0	3.70	4.70	2000	7	15		
ROS-ED6757/2	621	682	1.0	20	0.70	0.50	1000	12	35		
JCOS-ED6046/3	701	798	0.5	8.0	0.40	0.40	2000	8	30	BG419 CK605 BG419	
ROS-EDR3945/1	714	777	0.5	8.0	3.00	0.15	2500	8	17		
JCOS-ED5427/1	717	779	1.0	15.0	0.20	0.50	2000	12	25		
JCOS-ED6707/7	737	809	0.5	8.0	2.50	1.00	2000	10	35	BG419 BG419 BG419	
JCOS-ED6304/4	769	858	1.0	10.0	3.40	0.60	2000	5	22		
JCOS-ED6304A/2	773	917	1.0	8.0	2.70	0.50	2000	5	30		
ROS-EDR4133	769	834	0.5	5.0	0.70	1.00	2000	5	13	CK605 BG419 CK605	
JCOS-ED6772A/1	772	848	0.3	7.0	2.50	0.07	2000	10	25		
ROS-EDR4134	786	860	0.5	5.0	0.50	0.30	2000	5	17		
JCOS-ED6517A/3	796	931	1.0	15.0	2.00	0.30	2000	9	30	BG419 CK605 A06	
ROS-EDR4135	818	895	0.5	5.0	1.00	0.50	2000	5	18		
POS-ED5507/2	779	975	1.0	15.0	6.50	1.10	300	12	25		
JCOS-ED6865/2	849	1013	1.0	15.0	1.00	0.02	2000	11	30	BG419 CK605 BK377	
ROS-EDR4217/2	884	921	0.5	10.0	1.20	0.80	2000	5	10		
JTOS-ED5197/3	889	958	1.0	8.0	4.40	0.60	2000	12	25		

*THESE ARE NON-STOCK MODELS. CONSULT APPLICATIONS DEPT. FOR FINAL SPECIFICATIONS.
SMALL QUANTITY DELIVERY 6 WEEKS AFTER ORDER ACCEPTANCE



Distribution Centers NORTH AMERICA 800-654-7949 • 417 335-5935 • Fax 417-335-5945 • EUROPE 44-1252-832600 • Fax 44-1252-837010

INTERNET <http://www.minicircuits.com>

P.O. Box 350166, Brooklyn, New York 11235-0003 (718) 934-4500 Fax (718) 332-4661

ISO 9001 CERTIFIED

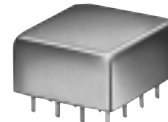
75 to 3192 MHz



BJ293



BG419



C145

REFERENCE NO.	FREQUENCY COVERAGE MHz		TUNE VOLTAGE V		PULLING MHz pk-pk @12 dB	PUSHING MHz/V	3 dB MOD. BANDWIDTH kHz	POWER SUPPLY		CAPD DATA FOR ADDITIONAL PARAMETERS	CASE STYLE
	Min.	Max.	Min.	Max.	Typ.	Typ.	Typ.	Voltage V	CURRENT mA Max.		
ROS-EDR4295	912	983	0.5	5.0	0.50	0.05	2500	5	27		CK605
POS-ED6986/1	910	1884	1.0	25.0	15.00	2.80	5000	12	28		A06
ROS-ED6824/3	840	1529	1.0	12.0	25.00	5.00	2000	5	25		CK605
ROS-EDR4293	899	1900	1.0	25.0	20.00	3.00	2500	12	17		CK605
ROS-EDR3946/1	1022	1096	0.5	5.0	1.50	0.60	2500	5	15		CK605
JTOS-ED5496/1	1025	1741	1.0	25.0	50.00	2.00	2000	8	30		BK377
ROS-EDR4296	1044	1103	0.5	5.0	0.50	0.50	2500	5	25		CK605
JTOS-ED6640/3	1025	1098	0.3	5.0	0.90	0.10	2000	10	30		BK377
JCOS-ED5151B/2	1064	1138	0.3	9.0	1.00	0.09	2000	8	40		BG419
ROS-EDR4039	1074	1118	0.5	5.0	15.00	2.50	2500	5	8		CK605
ROS-EDR4266	1124	1718	2.0	20.0	26.00	2.00	2500	8	27		CK605
JCOS-ED4735/1	1062	1132	1.0	8.0	1.90	0.60	2000	8	35		BG419
ROS-EDR4255/1	1206	1317	0.5	5.0	0.40	2.00	2500	5	32	FOR DATA	CK605
ROS-EDR4348	1220	1337	1.0	5.0	0.50	1.50	2500	5	35		CK605
JTOS-ED4715B/2	1225	1289	0.5	6.0	4.60	0.50	2000	5	25		BK377
JTOS-ED5346/3	1270	2130	1.0	25.0	40.00	1.50	1000	8	30	SEE YONI ON OUR WEBSITE	BK377
ROS-EDR3979/4	1360	1417	0.3	5.0	3.50	2.00	2500	5	24		CK605
ROS-ED6756/2	1486	1672	0.5	10.0	1.10	1.50	2000	5	25		CK605
ROS-EDR4347	1430	1554	0.5	5.0	1.00	1.80	2500	5	23		CK605
ROS-EDR4298	1531	1671	0.5	5.0	0.50	0.90	2500	5	23		CK605
ROS-EDR4318	1544	1840	0.5	5.0	20.00	3.00	2500	5	16		CK605
JTOS-ED6924/14	1595	2710	1.0	15.0	12.00	2.00	2000	12	35		BK377
ROS-EDR4259	1606	2034	1.0	20.0	20.00	1.50	2500	8	27		CK605
ROS-EDR4179/2	1646	1740	1.0	9.0	25.00	3.00	2500	8	21		CK605
ROS-EDR4308/1	1707	1831	0.5	5.0	3.00	1.00	2500	5	24		CK605
ROS-EDR4247	1705	1801	1.0	9.0	5.00	3.00	2500	8	22		CK605
ROS-ED6981/2	1706	1854	0.5	5.0	14.00	2.50	1600	5	25		CK605
JTOS-ED6281/3	1668	2558	0.5	10.0	10.00	2.50	2000	12	25		BK377
JTOS-ED6817	1679	2827	1.0	16.0	11.00	1.50	3000	12	30		BK377
JTOS-ED6530/2	1714	1864	0.5	5.0	13.00	8.00	2000	8	25		BK377
ROS-EDR4249	1823	1946	0.5	8.0	5.00	4.00	2000	8	22		CK605
ROS-EDR4248	1881	2013	1.0	9.0	5.00	2.50	2000	8	22		CK605
ROS-EDR3991/1	1907	2019	1.0	9.0	5.00	3.00	2500	8	21		CK605
JTOS-ED6120/3	1886	2394	0.5	8.0	15.00	5.00	10000	5	25		BK377
ROS-EDR4284/1	2018	2140	0.5	5.0	1.00	1.00	2500	5	21		CK605
ROS-ED6794/2	2151	2841	0.5	7.0	35.00	1.50	10000	5	25		CK605
ROS-EDR4297	2197	2336	0.5	5.0	1.00	3.00	2500	5	20		CK605
JTOS-ED6531/1	2191	2507	1.0	15.0	8.00	0.70	2000	10	30		BK377
ROS-EDR4154	2903	3192	0.5	5.0	20.00	5.00	2500	5	18		CK605



The Design Engineers Search Engine
 Provides Actual Data Instantly
 At: <http://www.minicircuits.com>

In Stock... Immediate Delivery
 For Custom Versions Of Standard Models
 Consult Our Applications Dept.

