

Models 56 & 83

Fixed Coaxial Attenuators

dc to 26.5 GHz
2 Watts

3.5mm Connectors & New Bulkhead Versions



Features

- /// Precision 3.5mm Connectors.
- /// Low SWR & Flat Response.
- /// Bulkhead ideal for instrument front panels.

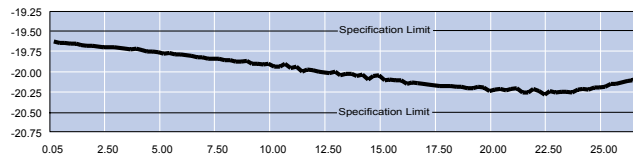
Specifications

NOMINAL IMPEDANCE: 50 Ω

FREQUENCY RANGE: dc to 26.5 GHz

MAXIMUM DEVIATION OVER FREQUENCY (dB):

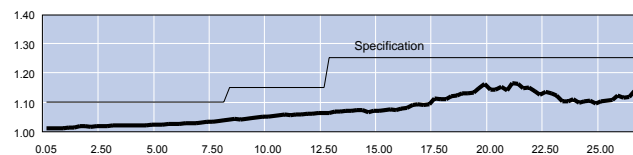
Nominal ATTN (dB)	56	83
0	+ 0.50	- -
1 - 10	\pm 0.60	\pm 0.60
20, 30	\pm 0.75	- - -



Typical Attenuation Accuracy of a 56-20

MAXIMUM SWR:

Frequency (GHz)	56	83
dc - 8	1.10	1.10
8 - 12.4	1.15	1.15
12.4 - 26.5	1.25	1.20



Typical SWR of a 56-20

POWER RATING: 2 watts **average** to 25°C ambient temperature, derated linearly to 0.5 watts at 85°C. 500 watts **peak** (5 μ sec pulse width; 0.2% duty cycle).

POWER COEFFICIENT: < 0.005 dB/dB/watts

TEMPERATURE COEFFICIENT: < 0.0004 dB/dB/°C

TEMPERATURE RANGE: -55 °C to +85 °C.

CALIBRATION: Insertion Loss and SWR Testing performed across frequency range. Test data available at additional cost.

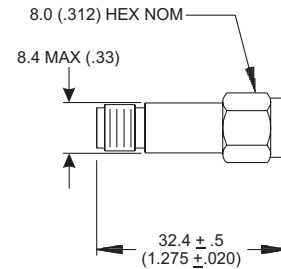
CONNECTORS: 3.5mm connectors - contact pin recession (0 to 0.003 in).

CONSTRUCTION: Stainless steel body and connectors; gold plated beryllium copper contacts.

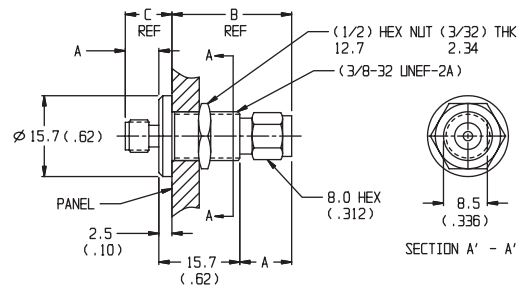
WEIGHT: 4 g (0.14 oz) maximum

PHYSICAL DIMENSIONS:

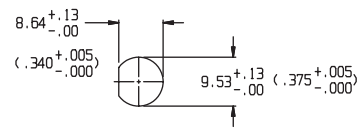
Model 56:



Model 83:



2	3.5 MM MALE	10.16 (.40)	23.37 (.92)	12.70 (.50)
1	3.5 MM FEMALE	6.35 (.250)	19.56 (.77)	8.89 (.35)
CONNECTOR OPTION	DESCRIPTION	DIM A+/- .5 (.02)	DIM B	DIM C

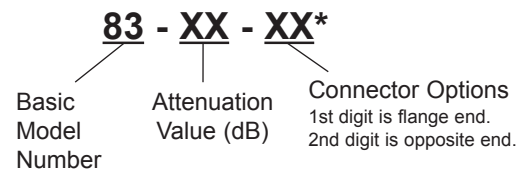


SUGGESTED MOUNTING HOLE

NOTE: All dimensions are given in mm (inches) and are maximum, unless otherwise specified.

MODEL NUMBER DESCRIPTION:

Example:



*Connector options for Model 83 only.

CALIBRATED ATTENUATOR SET (AS-20): Model 56 is also available in a Calibrated Attenuator Set which includes five different attenuators (3, 6, 10, 20, 30 dB). Refer to Calibrated Attenuator Sets data sheet for more information.