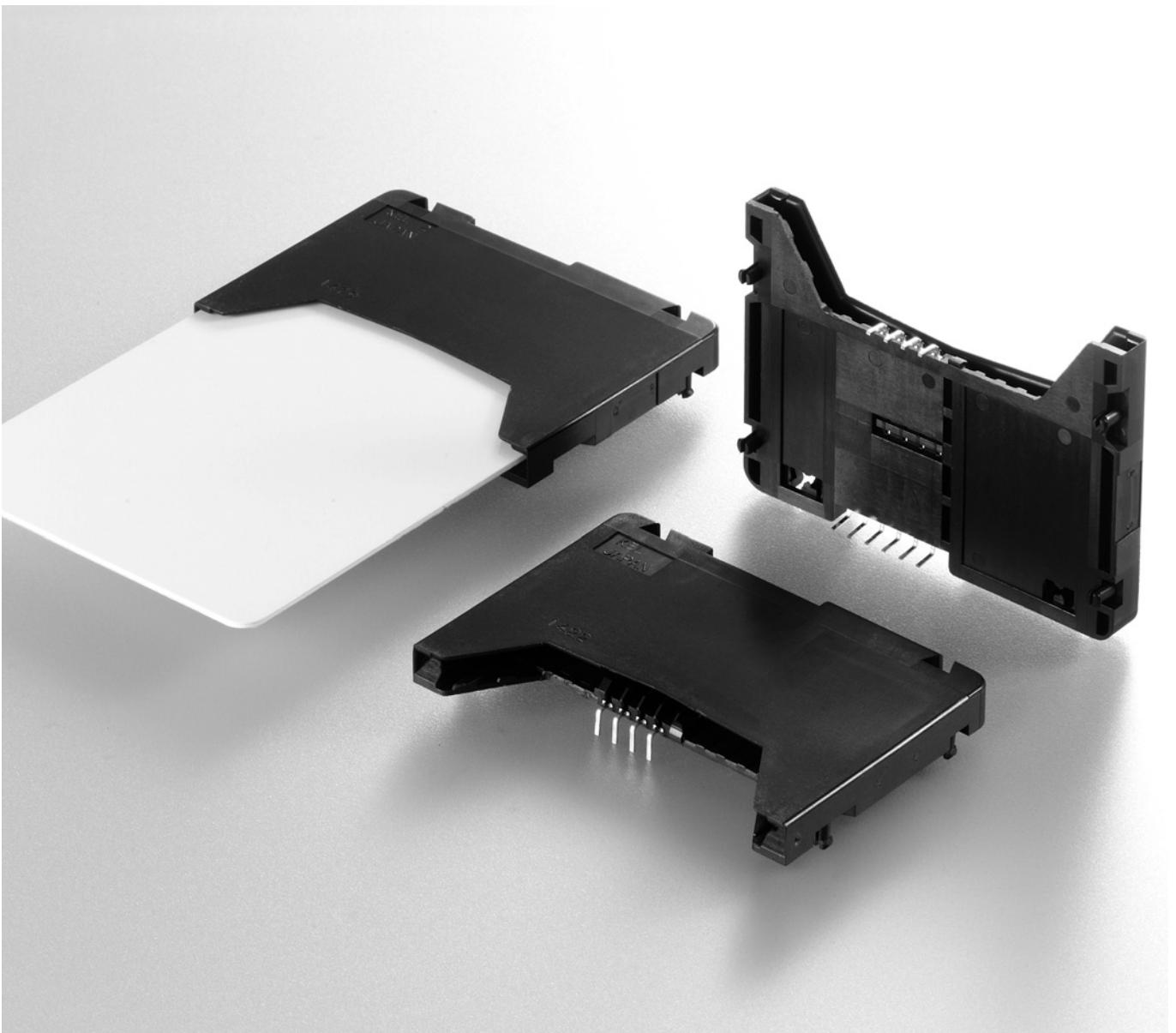
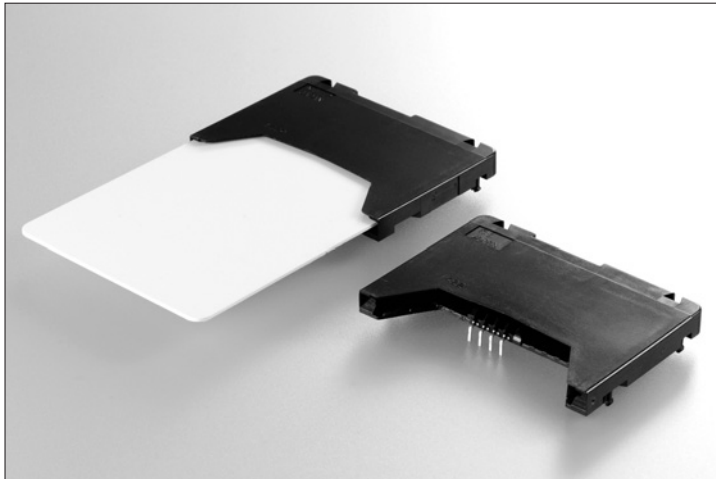


**IC Card (Smart Card) Connector
Landing Contact DIP Solder Type**

ISC5 SERIES





FEATURES

- EMV (Europay, Mastercard and VISA) compatible design
- Conforms to ISO/IEC 7816 standards
- Simple structure
- Original "Seesaw" contact design
- Ultra low profile with 5.3mm(0.209") height
- With card detection switch
- Highly durability for IC card insertion/withdrawal (200,000 times min. guaranty)
- DIP solder terminals
- With positioning and retention hooks

ORDER CODE

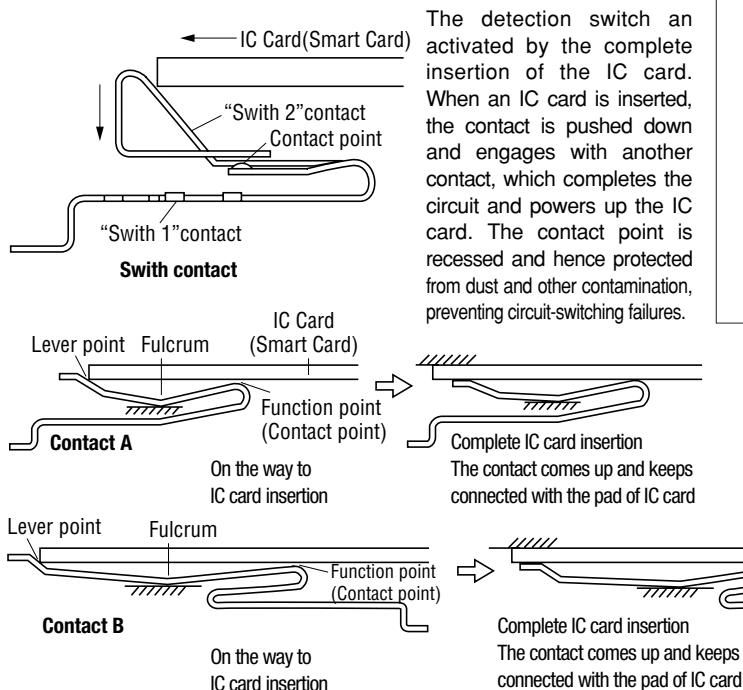
ISC5-08 S

- Guide type
S : Short
- Number of contacts
08 : 8 pin
- Series name
ISC5 : Landing contact DIP solder type for IC card (Smart card) connector (Conforms to ISO/IEC 7816 standards)

SPECIFICATIONS

- Insulator material : Glass-filled PBT (UL 94V-0), Black
- Contact material : Copper alloy
- Contact plating : Contact area ; 0.38 μ m min. Gold over Nickel
Terminal area ; 2 μ m min. Tin alloy over Nickel
- Detection switch : Copper alloy
- Switch plating : Contact area ; 0.38 μ m min. Gold over Nickel
Terminal area ; 2 μ m min. Tin alloy over Nickel
- Current rating : Contact ; 1A per contact
Detection switch ; 1mA to 50mA (20VA max.)
- Contact resistance : Contact ; 40m Ω max.
Detection switch ; 100m Ω max.
- Dielectric withstanding voltage : 1,000V AC for 1minute
- Insulation resistance : 1,000M Ω min. at 500V DC
- Operating temperature : -40°C to +85°C

"SEESAW" CONTACT CONCEPT



APPLICATIONS

POS terminals, Automatic teller machines (ATM), TV set top boxes, Dummy terminals, Electronic toll collection (ETC), Vending machines, Ticket machines, Medical ID systems, Electronic wallet card reader, ID/Access control, etc

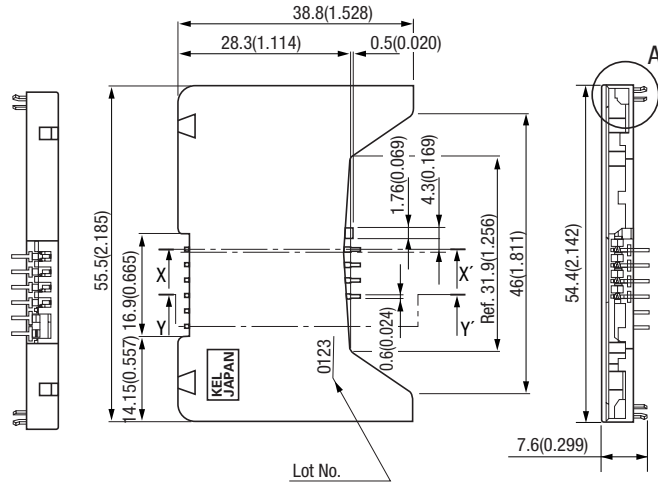
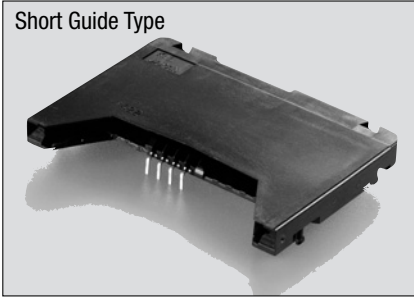
In the case of incomplete insertion or partial withdrawal of an IC card, the contacts do not touch the IC card. When the edge of the IC card reaches the lever points, the contact points lift and touches the IC card pad area with a short wiping action. This feature is a unique KEL concept.

ISC5 series is composed of a combination of Contact A(outside)and Contact B(inside).

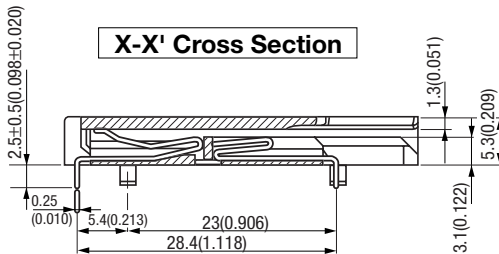
ISC5-08S (Short Guide Type)

Unit:mm(inch)

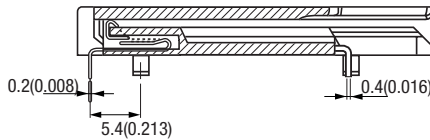
Short Guide Type



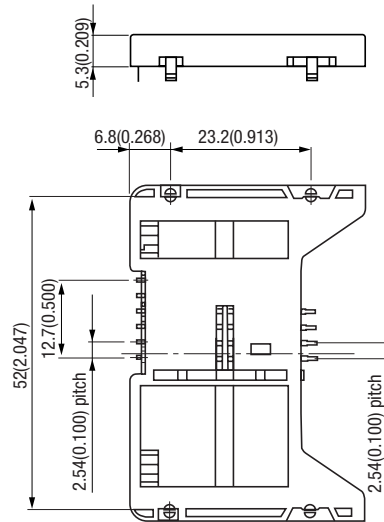
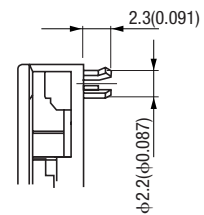
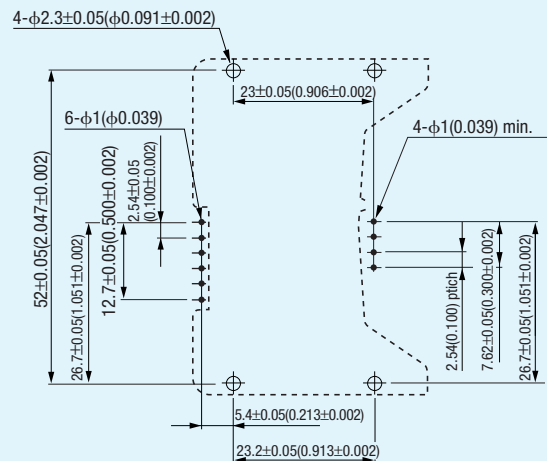
X-X' Cross Section



Y-Y' Cross Section



Detail of section A

Printed Circuit Board Layout
(Component Side View)

* It is recommended that the connector be located 12mm or more from the card insertion opening of the equipment that the connector is used in. This 12mm or more dimension, from the outside of the opening to the leading edge of the connector, prevents the card from being displaced by vibration.

