

Negative Voltage Hot Swap Controller with Active Power Filter

Evaluation Board for the IXHQ100

Figure 1 describes a generic circuit for operating the IXHQ100. This evaluation board includes all the connection to the IXHQ100. The bill of material is given separately in each application.

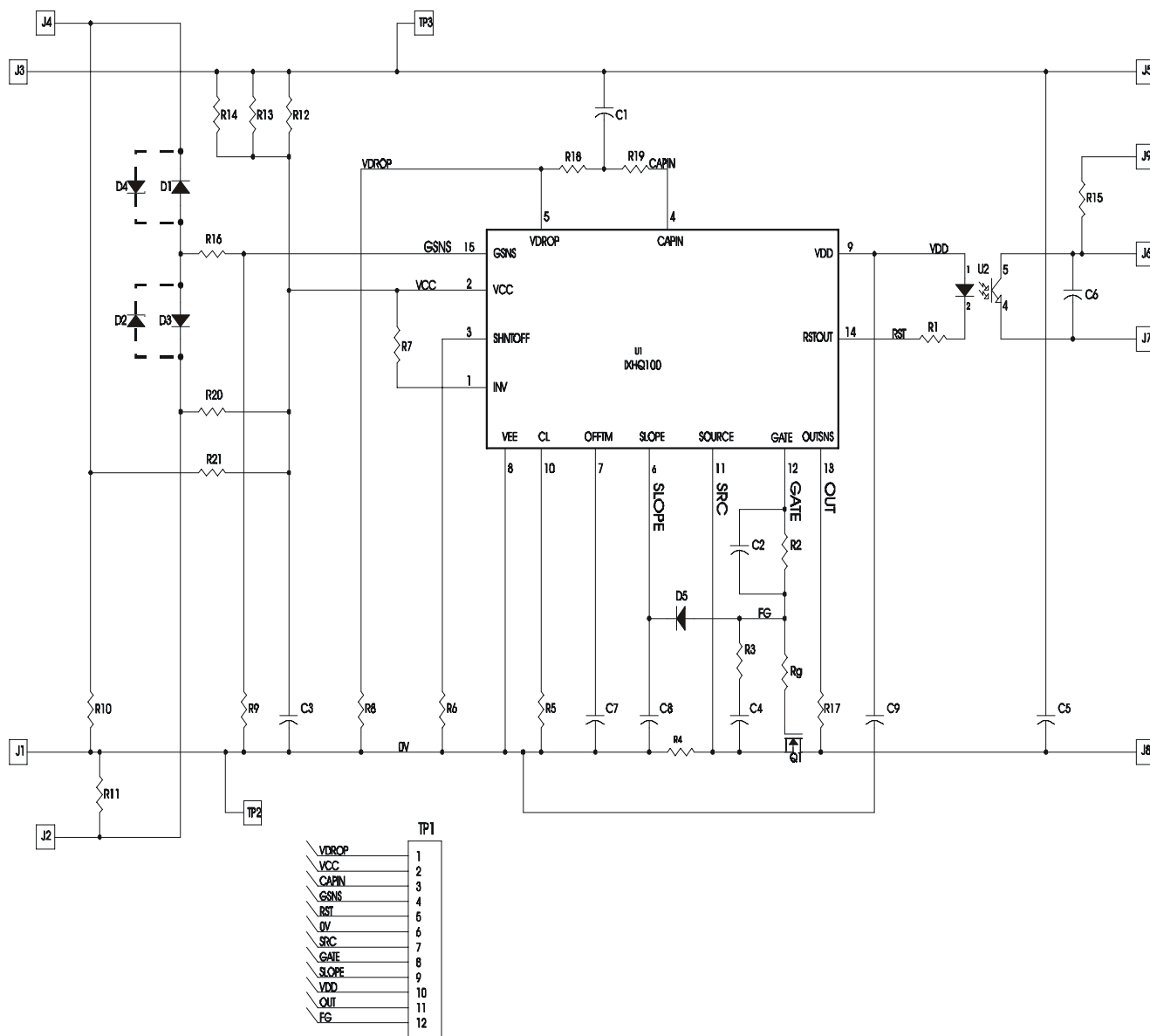


Figure 1

A two-layer PCB layout is given in figure 2 and 3. The figures are in 2:1 scale.

Component Side Traces

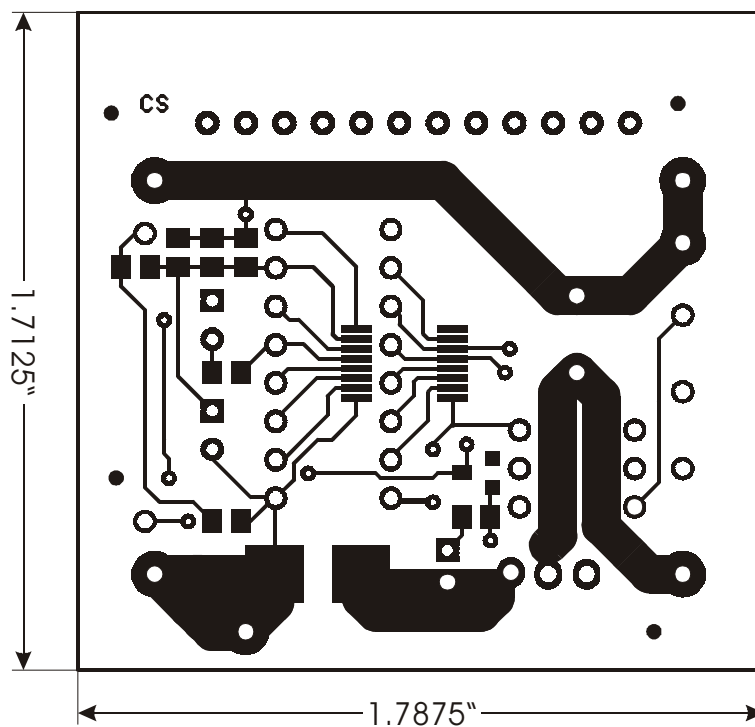


Figure 2

Solder Side Traces

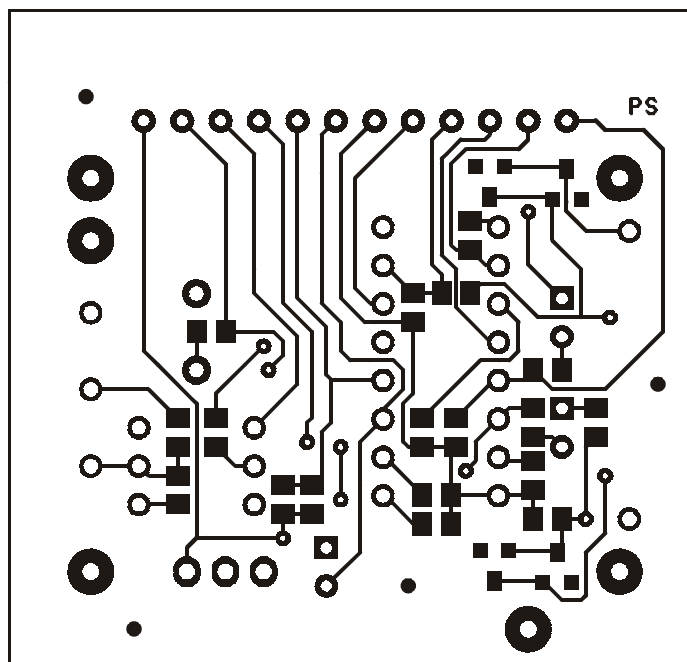


Figure 3

The component assembly schematic is given in figure 4 and 5.

Component Side Assembly Silk Screen

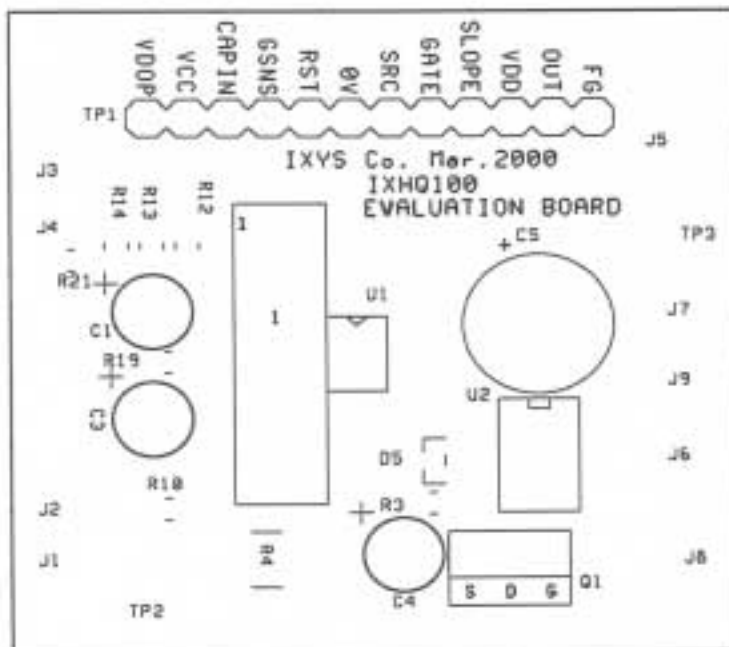


Figure 4

Solder Side Assembly Silk Screen

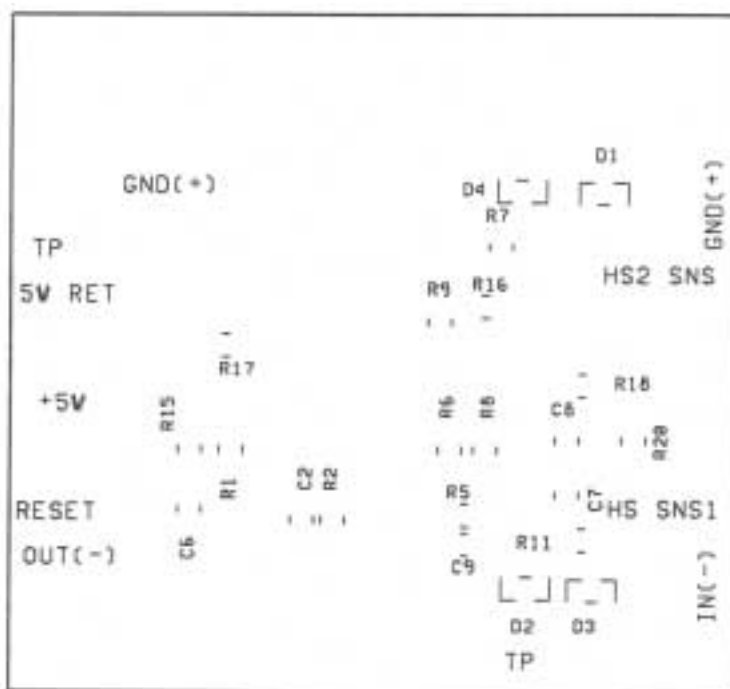


Figure 5