

IR-QQ Fiber

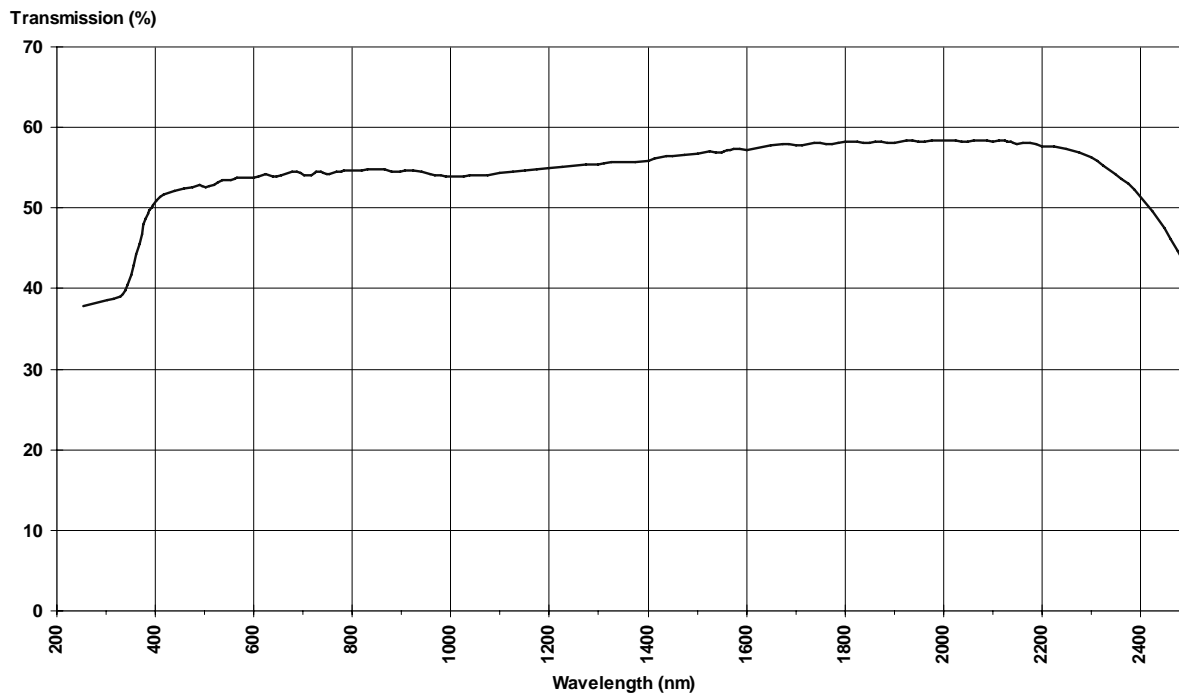
Material: Synthetic Quartz

Characteristics: Specially developed to achieve an improved light transmission in the IR range with a narrower aperture angle. The core material is anhydrous quartz glass, the cladding material is doped quartz.

Specifications:

Numerical Aperture:	0.25
Acceptance Angle:	29°
Fiber diameter (μm):	70
Bundle length (M):	≤ 10

Spectral Transmission for 1 M Bundle, Fiber Type IR-QQ



SCHOTT-FOSTEC, LLC
62 COLUMBUS ST.
AUBURN, NY 13021
USA

PHONE: +1 (315) 255-2791
FAX: +1 (315) 255-2695
E-MAIL: info@schott-fostec.com
INTERNET: www.schott-fostec.com

SCHOTT



Copyright 2000. All Rights Reserved.

18.04.01 REV A