

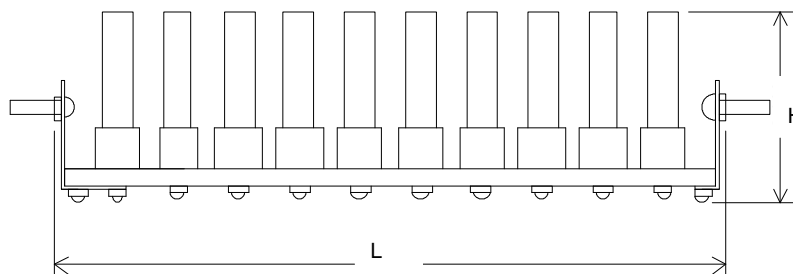
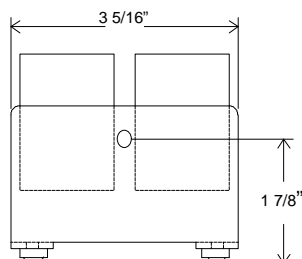
SERIES
HRS3.5-
HRS5-
HRS10-



3.5 to 25 Amps
9,600V - 48,000V
Standard Recovery



Complete Replacement For:
Philips Amperex
RS3.5, RS5, RS10
OSB-, OSM-, OSS-, 9115, 9215, 9415



Power Rectifier Assembly Capacitor Compensated

HRS3.5-						Height H=3.25" Max			
Average Forward Current Max @ 50°C Ambient					I_{FAVM}	3.5 Amps			
Average Forward Current Max @ 50°C (Forced Air 300ft/min)					I_{FAVM}	5.0 Amps			
Maximum Surge Current, 10 ms Sine Pulse					I_{FSM}	250 Amps			
HRS5-						Height H=3.25" Max			
Average Forward Current Max @ 50°C Ambient					I_{FAVM}	5.0 Amps			
Average Forward Current Max @ 50°C (Forced Air 300ft/min)					I_{FAVM}	15.0 Amps			
Maximum Surge Current, 10 ms Sine Pulse					I_{FSM}	400 Amps			
HRS10-						Height H=3.75" Max			
Average Forward Current Max @ 50°C Ambient					I_{FAVM}	10.0 Amps			
Average Forward Current Max @ 50°C (Forced Air 300ft/min)					I_{FAVM}	25.0 Amps			
Maximum Surge Current, 10 ms Sine Pulse					I_{FSM}	950 Amps			
HRSxx-	-6	-9	-12	-15	-18	-21	-24	-27	-30
Length L (Inches)	4.8	7	8.15	10.4	11.5	12.62	14.85	16	18.2
V_{RRM} (kV)	9.6	16	19.2	25.6	28.8	32	38.4	41.6	48
V_F @ $I_F=5.0A@25^{\circ}C$	6	10	12	16	18	20	24	26	30
Operating and Storage Temperature					T_A		-55°C to 150°C		
Maximum Reverse Leakage Current @ V_{RRM} @ $T_J=25^{\circ}C$					I_{RM}		100 μ Amps		
Higher Voltages, Higher Surge Currents, Fast Recovery, Custom Lengths, Doubler, Positive and Negative Taps Available, Please Consult the Factory.									
Add an S for M6-35mm Studs instead of ¼-28-1" Studs Example HRS5-18S is 5 Amps Average Forward Current, 28.8kV, L=11.5", with M6 Studs									

HV Component

Mail: PO Box 2484, Farmingdale, NJ 07727
Fax: (732) 938-4451
<http://www.hvca.com>

HV Component Associates specializes in the design, development and manufacture of high voltage rectifiers and diodes, voltage multipliers, bridge rectifiers, standard, fast, and ultra fast rectifier



Associates, Inc.

Factory: 1709 Route 34, Wall, NJ 07719
Telephone: (732) 938-4499
Email: info@hvca.com

devices, and special assemblies for exacting custom applications. Our experience and our highly advanced technology provide the most economical and highest quality rectifiers available today.