



Microwave Components

To apply for wide range of mobile communication and optical communication.

30 years of tantalum film development history is combined with microwave technology.

Features

1. High environmental stability and high reliability
2. Non-cut resistance trimming for high frequency characteristic and stability
3. A variety of custom designs are available.

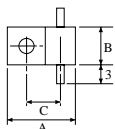
Applications

Mobil phone base circuit terminator
Characteristic impedance compensation

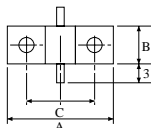
Terminations

■ Plate Types

Style (I)



Style (II)



DL-05



DL-20



DL-30



DL-50



DL-75

Type	Impedance (Ω)	SWR	Frequency (GHz)	Power Rating (W)	Dimensions(mm)				
					Style	A	B	C	H
DL-05	50,100	1.35	~3	5.0	(I)	9.7	4.1	5	1.7
DL-20	50,100	1.20	~6	15	(II)	13	4.0	8	1.4
DL-30	50,100	1.35	~4	25	(II)	15	4.1	10	1.7
DL-50	50,100	1.35	~3	50	(II)	15	7.0	10	2.1
DL-75 ^{※1}	50	1.35	~4	75	(II)	21	11.6	15	2.4
DL-150 ^{※2}	50	1.35	~4	150	(II)				

※1 Pat. Pending ※2 Under development H:Lead height

Applications; For termination of high frequency circuit.

Distributor/Synthesizer of oscillator circuit.

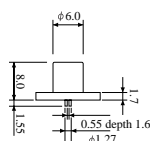
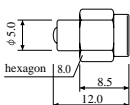
■ Coaxial Type Resistor



Type	Rated wattage (W)	Impedance (Ω)	Tolerance (%)	Custom supplied contact acceptable.
For SMA	1/8 (1/2)	50,75	±2, ±1	

Application; Built in resistor for coaxial type terminator.

■ Coaxial Types



HTR-601A



HTR-701

Type	Impedance (Ω)	SWR	Frequency (GHz)	Power Rating (W)	Features
HTR-601A	50	1.20	~18	0.25	SMA type
HTR-701	50	1.35	~18	1.0	Direct connection type strip line

Applications; For termination of high frequency circuit.

※ Specifications are subject to change without notice.