

LAN Components

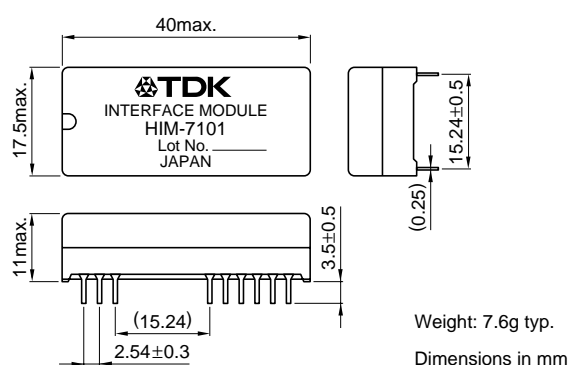
Interface DIP

HIM Series HIM-7101

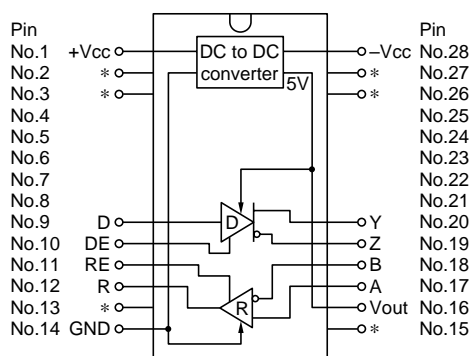
FEATURES

- Conforms to EIA RS-485 standards.
- A line driver port and line receiver port are built-in.
- An insulated DC to DC converter provides output voltage stability and EMC prevention that are superior to units employing the charge pump method.
- Provides power isolation from external loads (5V, 100mA).
- The use of an aluminum board ensures high withstand voltage and low leakage.

SHAPES AND DIMENSIONS



BLOCK DIAGRAM



*As pin No.2, 3, 13, 15, 26 and 27 are connected internally, do not connect external circuit.

•Pin No. 4, 5, 6, 7, 8, 21, 22, 23, 24 and 25 are NC.

ELECTRICAL CHARACTERISTICS

Maximum rating		
Operating temperature range	T _{OPR}	0 to +70°C
Storage temperature range	T _{STG}	-20 to +85°C
Humidity	H	95(%)RH max.
Power supply voltage E _{dc}	V _{CC}	0 to +6V
Output voltage 1	V _{O1}	—
Output voltage 2	V _{O2}	—
Driver input voltage	V _{D1}	—
Driver output voltage	V _{D0}	—
Receiver input voltage	V _{R1}	—
Output current 3	I _{O3}	110mA
Enable input voltage E _{dc}	V _{1E}	+5.5V
Bus terminal voltage E _{dc}	V _{BUS}	-7 to +12V
Power supply		
Power supply voltage E _{dc}	V _{CC}	+4.75 to +5.25V
Power supply voltage [no load]	V _{CC}	—
Power supply current	I _{CC}	450mA
Power supply current [no load]	I _{CC}	85mA
Output voltage 1 E _{dc}	V _{O1}	+4.75 to +5.25V
Output voltage 2	V _{O2}	—
Output voltage 3* E _{dc}	V _{O3}	+4.5 to +5.5V
Output current 3	I _{O3}	100mA
Output V _{O3} ripple voltage E _{dc}	V _{OR}	+200mV
Stand by current	I _{STBY}	—
Primary-secondary isolation withstand voltage E _{dc}	V _{BK}	1000V
Receiver		
Threshold voltage E _{dc}	V _{RIH}	+0.2V
	V _{RIL}	-0.2V
Line input current	I _I	1mA[12V], -0.8mA[7V]
H-level output voltage E _{dc}	V _{OH}	+2.7V
L-level output voltage E _{dc}	V _{OL}	+0.5V
Driver		
Threshold voltage E _{dc}	V _{DIH}	+2V
	V _{DIL}	-0.8V
Output voltage	V _{DOH}	—
	V _{DOL}	—
Differential output voltage E _{dc}	V _{OD1}	+1.5 to +6V
	V _{OD2}	+1.5 to +5V
	V _{OD3}	+1.5 to +5V

* For external load drive